



Municipal511 and Responder511

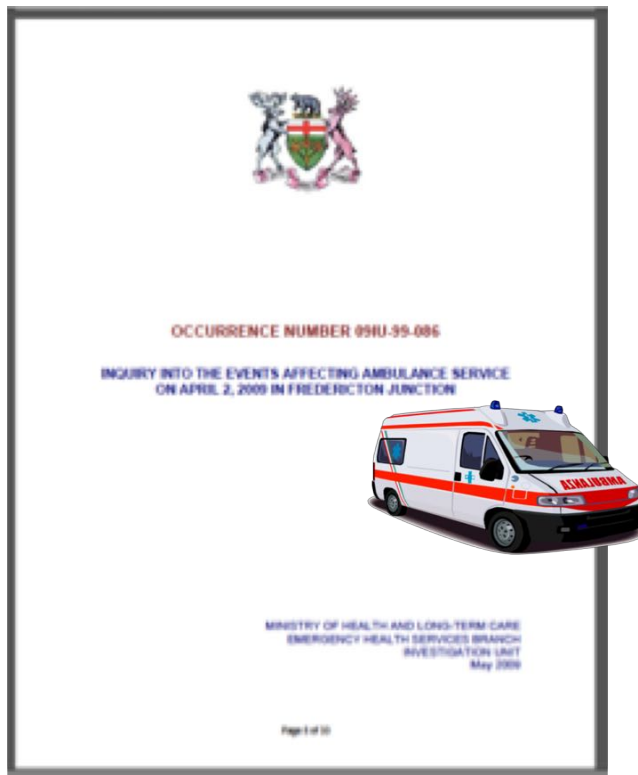
Doug Allport

December 20, 2018

Doug Allport, Crisis Communications

- **Public Alerting**
 - Canada's first broadcast alerting system
 - Canada's public alerting protocol
 - Canada's Common Look and Feed Guidance
 - Canada's Alert Ready - CRTC appointed Governor
 - Not-for-profit to support above
- **Shared Situational Awareness**
 - Provincial shared situational awareness system
 - National situational information exchange (MASAS)
 - Not-for-profit to support above

Mapping road obstructions for responders *is the key to* shared situational awareness during crisis



- Public inquiry findings:
 - Child died due to, “A lack of data available ...to indicate roads and areas where ... there will be response time issues...”
 - Need for “... real time mapping...”
- Crisis communications findings:
 - Email, fax and phone calls do not paint the picture
 - Volume of email, fax and phone overwhelms stakeholders
 - Need for real time mapping

Transnomis Solutions Inc.

Road Information Management and Communications

For those with road information, and those who need it

Clients include:

- **York Region** – Advanced Traffic Management System (ATMS)
- **Durham Region** – Road Event Management System (REMS)
- **Waterloo Region** – Road Construction and Incident Management System (RCIMS)
- **ON Ministry of Transportation** Visibility Warning System, Traffic Queue Warning System

Technology overview:

- Map centric user interface, with dashboard and list views
- Integrates internal systems, field hardware, external data sources
- Control and monitor variable message signs (VMS) and cameras (CCTV), issue notifications, compute travel times, process permits, present to public, push to Waze, ...
- Deployed on client servers or cloud
- Online permitting

Ontario Good Roads Association (OGRA) Connected and Autonomous Vehicles (CAV) initiative

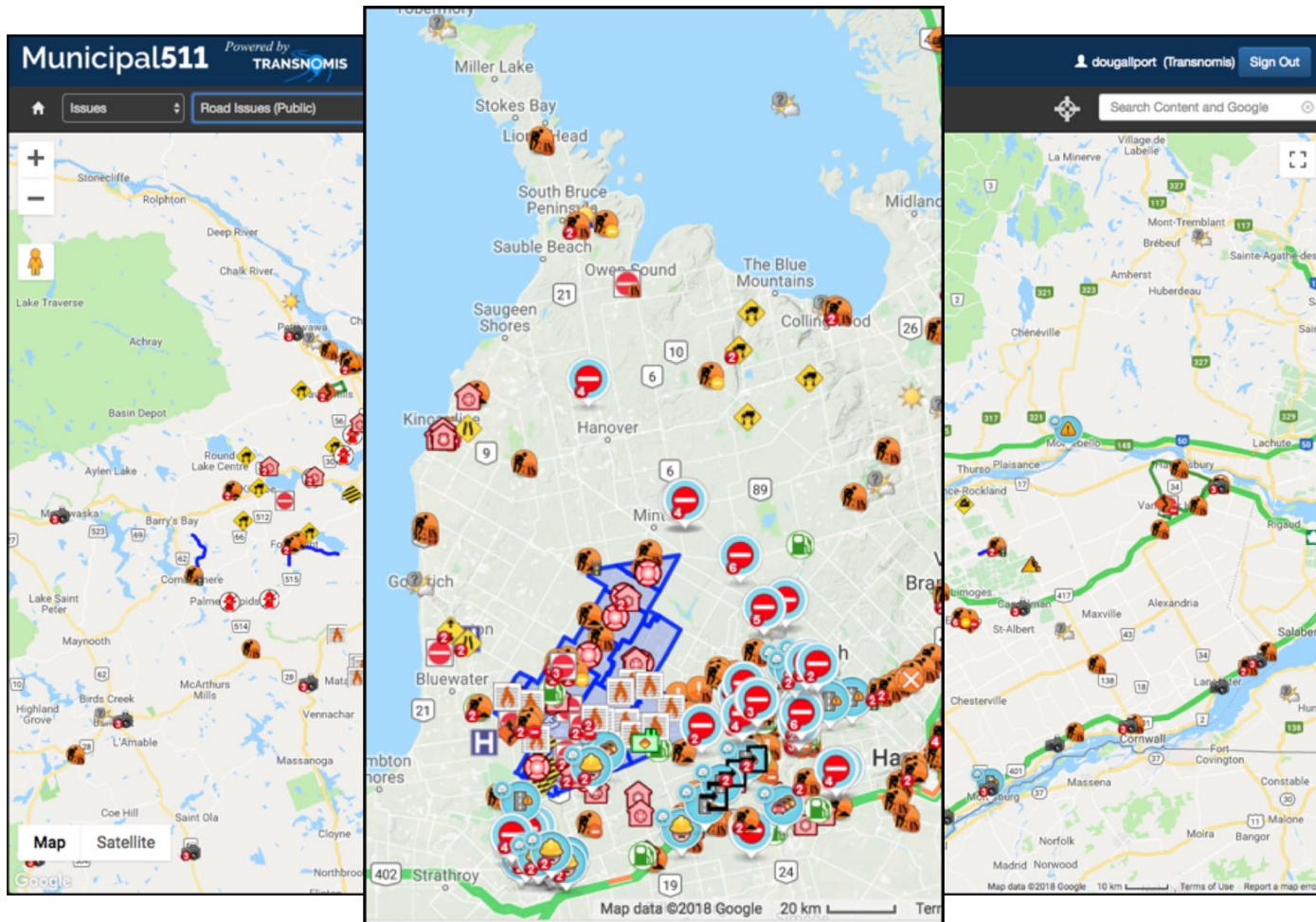
- July 5 2018 – “Ontario Good Roads Association (OGRA) establishes Memorandum of Understanding (MoU) with Transnomis Solutions Inc. to coordinate municipal collaboration efforts for Connected and Autonomous Vehicle (CAV) technologies”



Municipal511 & Responder511

Road information management and communications,
public safety common operating picture

Launched April 12 2017





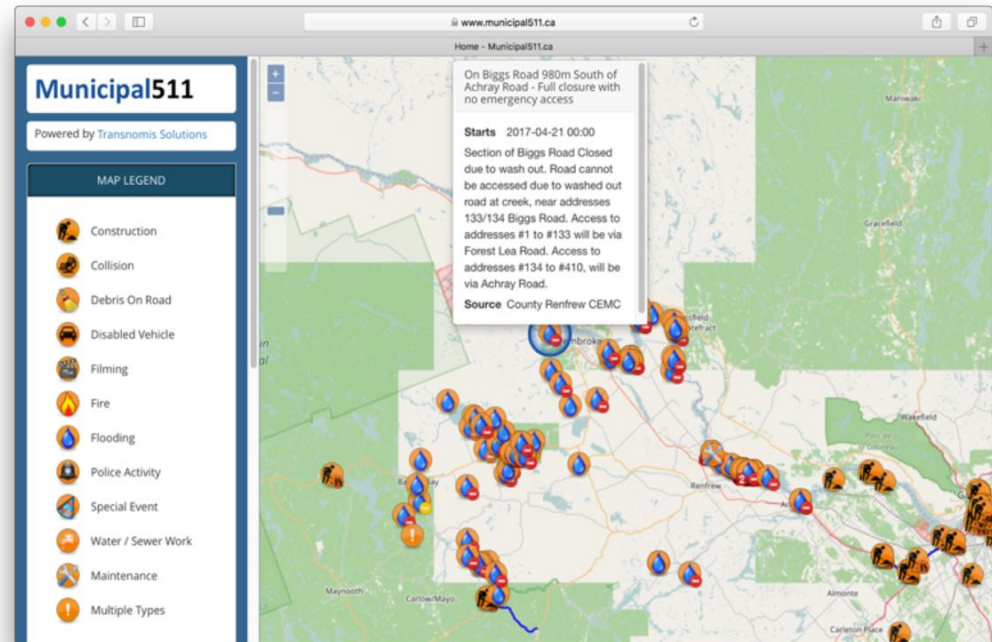
County of
Renfrew
 Ontario . Canada

Experience Our History, Share Our Future!

Public Service Announcement

- **May 1 2017**

“... the County of Renfrew in coordination with Local Municipalities have launched a web based map tool that allows the public to view where road closures are and where flooding is problematic for travel... The mapping tool is called “Municipal511”, and can be found online at www.municipal511.ca.”

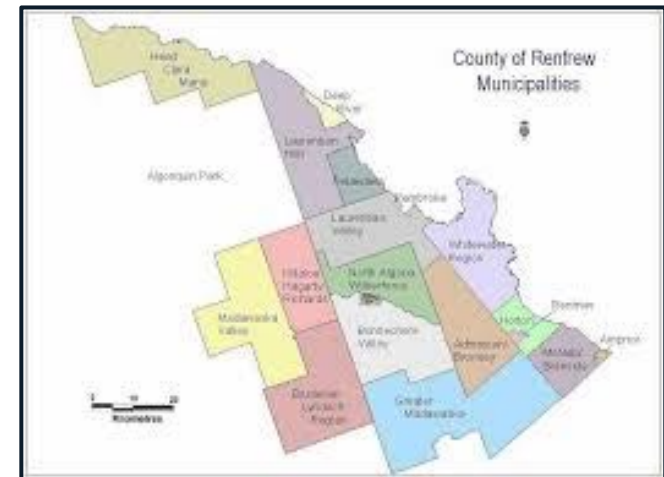
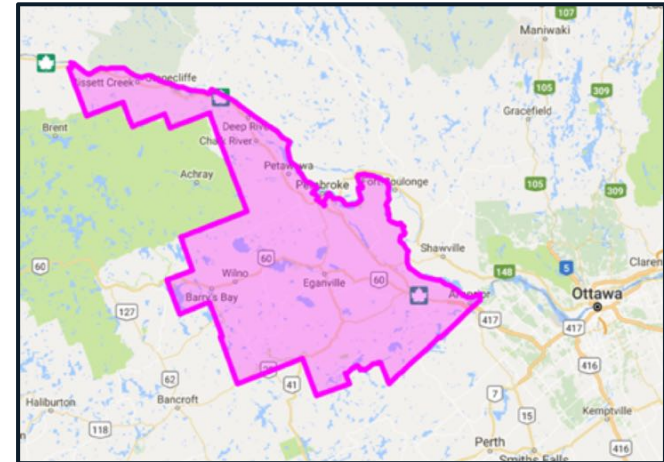




Use Case

- **Paramedic Service**
 - Receive email, fax and phone notices;
 - For now, near future, weeks ahead;
 - In words only (no map);
 - Without impact, e.g. 63 km detour;
 - From a very long list of sources
 - County, city, 17 lower tiers
 - 6 adjoining ON counties, lower tiers
 - MTO, MNR, QC

- **Public Works**
 - Road use and project conflicts
 - Police detours into work zones
 - No regional solutions
 - No solutions for small municipalities



Web service - desktop, tablet, phone

The screenshot shows a web browser window displaying the Municipal511 application. The browser address bar shows the URL: `authorities.municipal511.ca/Issue/Add?divisionId=5002`. The application header includes the Municipal511 logo, the text "Powered by TRANSNOMIS", the location "Collingwood Cc", and the temperature "4.9 °C".

The main navigation bar contains several tabs: "Issues", "Training/Demonstration", "Add", "Lists", "My Maps", "Reports", "More", "What's New", and a search bar labeled "Search Content and Google".

The "Add New Issue" form is the central focus, with the following fields and options:

- Type:** A dropdown menu set to "Emergency Road Closure".
- Priority:** A dropdown menu set to "Medium".
- Description:** A text area containing "Emergency road closure by OPP due to severe weather." with buttons for "Last description" and "Parse description".
- Locations:** A section with a "Add current location" button and instructions: "Right click/long-touch map to draw, or search/select/add location." Below this is a legend for "Emergency Road Closure - Road Closed - Emergency Access Only" with a red circle and slash icon, and a detailed description: "Grey Road 13 from The Blue Mountains-Euphrasia Townline to 70m South of Grey Road 40".
- Notification Options:** A checkbox that is currently unchecked.
- Contact Information:** A section with a contact icon, listing "Transnomis Solutions Inc.", "www.Transnomis.com", and "Doug@Transnomis.com, (613) 294-4425".
- Start and End Times (optional):** A section with a clock icon.
- Comments:** A section with a pencil icon.
- Submit/Cancel:** A green "Submit" button and a red "Cancel" button.

The right side of the interface features a map of the Collingwood area. A blue line is drawn on the map, representing the road closure route. The map includes standard navigation controls like zoom in (+), zoom out (-), and a "Map" button. The map data is attributed to Google, with a copyright notice for 2018 and a scale of 500 meters.

Visualize issue location, impact, and timing

2231539

Doran Road at Davis Road
- Road Closed - No Emergency Access

Detour Route (10.4 km)

Division M511 Road Issues (Public)

ID 2231539

Issue Type Construction

Priority High

Created 2017-10-13 11:39 By County of Renfrew Public Works

Updated 2017-10-16 15:51

Description County of Renfrew will be undertaking improvements to County Structure B018 (Davis Mills Bridge) located on County Road 26 (Doran Road) approximately 3.1 km south of Round Lake Road (County Road 58) From October 23, 2017 until October 27, 2017. During the

[More Information](#)

Google traffic, search and routing

Municipal511 Powered by TRANSNOMIS

Kemptville Cn 26.5 °C

dougallport (Transnomis) Sign Out

Issues Road Issues (Public) Add Lists My Maps More What's New 25 central avenue

Now Layers Map

Google Route Info

From 181 Moresby Dr, Kanata, ON K2M 1Z9, Canada
To 40 Central Ave W, Brockville, ON K6V 4N5, Canada

Travel Distance 99.0 km

Travel Time 1 hour(s) 2 minute(s) no traffic
1 hour(s) 11 minute(s) in current traffic

Transportation Type car

Direction

Head southwest on Moresby Dr 89 meters
toward Springwater Dr

Route 1	99.0 km	1 Hour 11 Minutes
Route 2	97.0 km	1 Hour 18 Minutes
Route 3	103.6 km	1 Hour 27 Minutes

Save trip to MyRoutes

More Details

Map data ©2018 Google 10 km Terms of Use Report a map error.

Nearest Hospital (BETA)

Queensway-Carleton Hospital	11.6 km 16 Minutes
Royal Ottawa Mental Health Centre	27.4 km 28 Minutes
The Ottawa Hospital - Civic Campus	28.7 km 29 Minutes
University of Ottawa Heart Institute	28.8 km 30 Minutes
The Ottawa Hospital - Riverside Campus	29.3 km 42 Minutes
Bruyère Continuing Care - Saint-Vincent Hospital	28.4 km 1 Hour

Load More

Public web map

English, French, and can be imbedded in municipalities website

Municipal511
Powered by TRANSNOMIS

Français

Legend

View None

- Collision
- Construction
- Detour
- Filming
- Investigation
- Load Restriction
- Low-Overhead
- Maintenance
- Narrow Road
- New Traffic Control Device
- Other
- Police
- Road Closure
- Special Event
- Staging Area
- Steep Hill
- Water Main Break

Map Satellite

Stonecliffe Rolphton

Municipal511
Powered by TRANSNOMIS

English

Légende

Voir Aucun

- Aire de Rassem
- Arête-Surbaissé
- Autre
- Colline Escarpé
- Collision
- Construction
- Détour
- Enquête
- Entretien
- Événement Spé
- Fermeture Rout
- Nouveau Dispos
- Régulation du T
- Permis de Trava
- Problème
- Police
- Restriction de C
- Route étroite
- Rupture d'une c

Municipalité de **RUSSELL** Township

ABOUT RESIDENTS BUSINESSES VISITORS TOWN HALL CONTACT US

Road Closures


HOME / NEWS / NEWS AND NOTICES / ROAD CLOSURES

Road Closures

"SEE THE MAP BELOW FOR LIVE CONSTRUCTION PROJECTS"

For additional information click here or contact the public works department at publicworks@russe.lt.ca or by phone 613-443-5078.

NOTICE: The City of Ottawa will have temporary closure on Boundary Road between Russell Road and Mitch Owens Road with intermittent lane closures from August 20, 2018 to December 14, 2018. More info: <https://bit.ly/2M1v0x7>



Municipal511
Powered by TRANSNOMIS

Map Satellite

Legend

View None

- Collision
- Construction
- Detour
- Filming
- Investigation
- Load Restriction
- Low Overhead
- Maintenance
- Narrow Road
- New Traffic Control Device
- Other
- Police

Map data ©2018 Google Terms of Use Report a map error

Municipalité de RUSSELL Township

About

- Council Meeting Minutes & Agenda
- Disclaimer
- Mission, Vision & Values
- Rate our Website
- Report an Issue
- Work at the Township

Contact Information

717 Notre-Dame St, Embury ON K0A 1W1
Telephone: 613-443-3066
Fax: 613-443-2042
Monday to Friday, 8:30 a.m. to 4:30 p.m.
Russell Township Directory

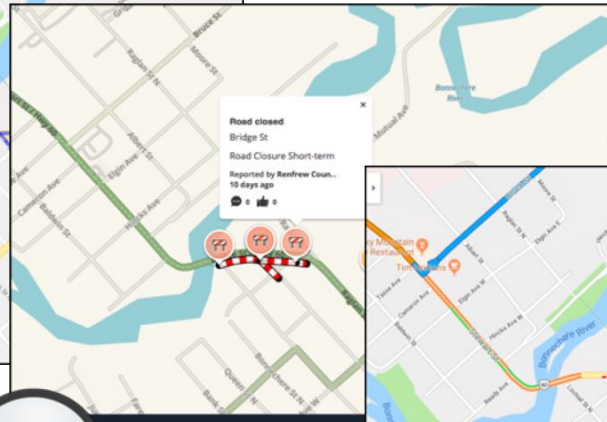
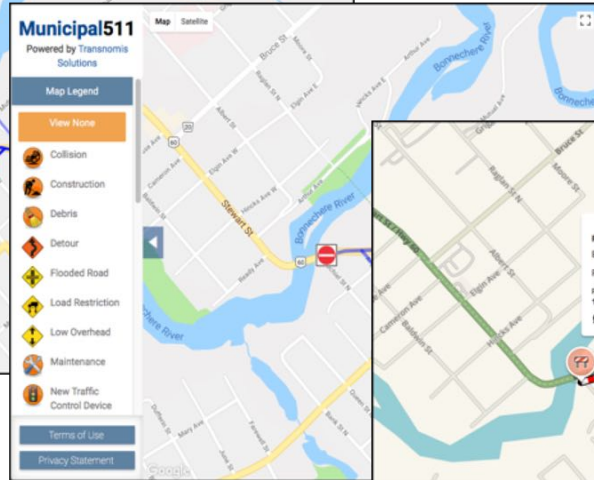
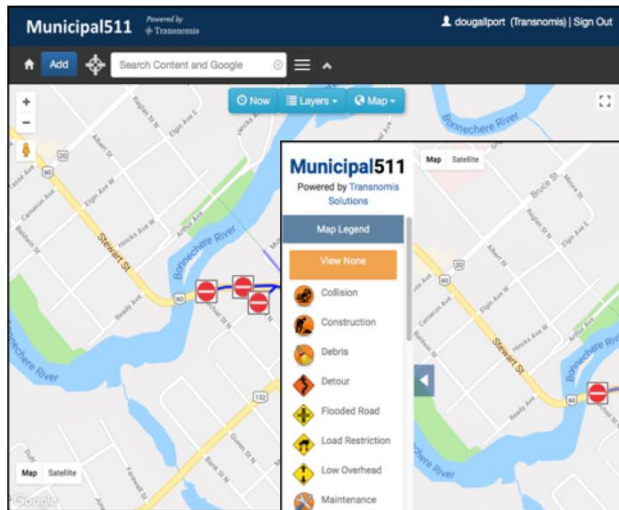
Log in

Russell Township | All Rights Reserved | Powered by CDS5500 | © 2018 West Corporation.

Map data ©2018 Google Terms of Use Report a map error

Public road data is distributed to ...

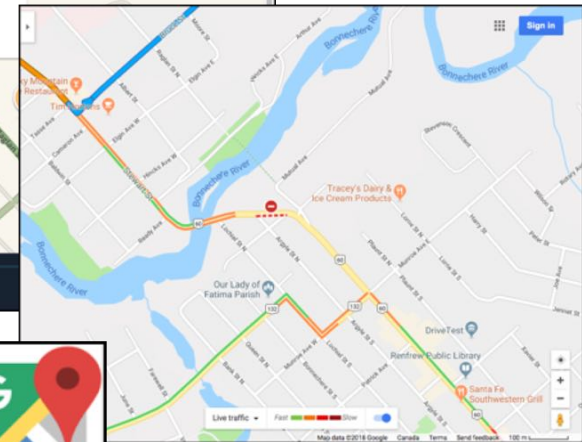
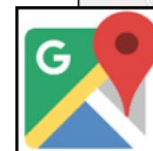
Waze (Google), TomTom (Apple Maps), HERE (Garmin, MapQuest, ESRI, INRIX), responder applications, ...



Who's
Responding



prēhos



Offered to MOHLTC,
MTO, and OPP

Push notification

Push Notification

Contact Groups DEMO Media x DEMO School Boards x

Email Contacts Doug Allport x Jane Doe x John Doe x

Now

Before Start Time 4 hours

Before End Time Disabled

Remind Me

Before Start Time Disabled

Before End Time 1 hour

Submit **Cancel**

Email Preview

Municipal511.ca Notification - Issue Updated - Construction #27281222 Hamel Avenue at National Street

Municipal 511 Notification

Powered by [Transnomis Solutions - Municipal511](#)

Status: Updated

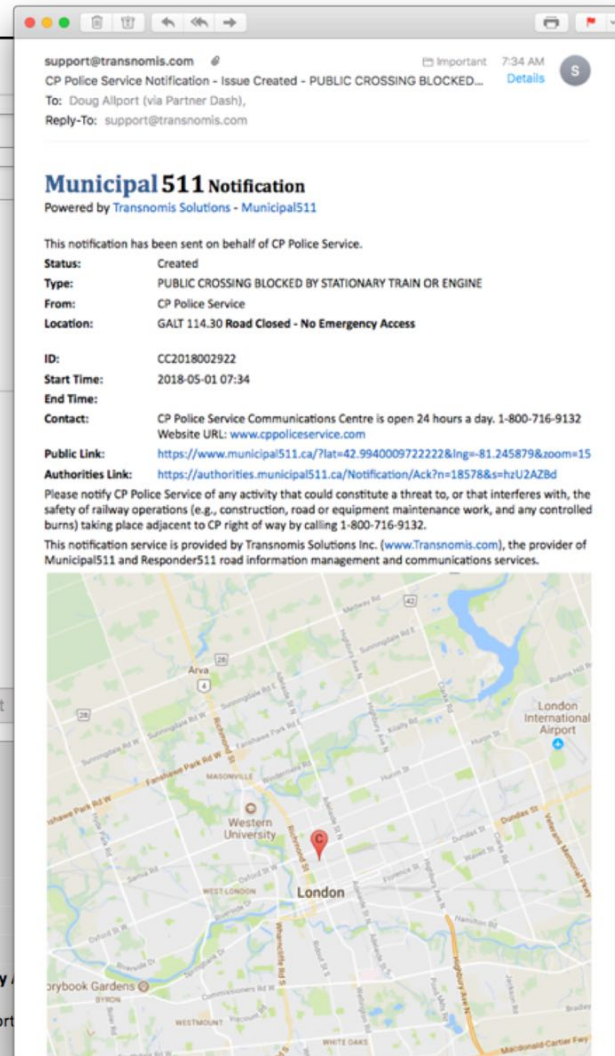
Type: Construction

From: Transnomis Solutions Inc.

Location: **Issue Location Hamel Avenue at National Street Road Closed - No Emergency**

Detour Hamel Avenue at Couture Crescent, to Couture Crescent, to 168m North of Couture Crescent

Description: Culvert Replacement. Road closed to all traffic, Detour signs posted.



Private, shared and public map layers

- **Roads**
 - Road Issues (Public)
 - Restrictions/Cautions (Public)
 - Winter Road Conditions (Public)
 - External Road Issues/Conditions
 - Cameras and sensors
- **Common Operating Picture**
 - Road Issues (Not Public)
 - Incidents/Events
 - Emergency Access Points
 - Key Infrastructure
 - Fire Services
 - Permitted Burning
 - Persistent Hazards
 - Response Resources
- **Other**
 - Training/Demonstration
 - Exercise
- **Third Party Overlays**
 - Google Traffic
 - Radar: Rain, Snow
 - Temperature
 - Humidity
 - Wind direction and speed
- **Custom (private) map layers**
 - CP rail crossing issues
 - Waze partners
 - AVL data
 - Internal processes

Blocked rail crossings

support@transnomis.com @ Important 7:34 AM
 CP Police Service Notification - Issue Created - PUBLIC CROSSING BLOCKED... Details 5
 To: Doug Allport (via Partner Dash),
 Reply-To: support@transnomis.com

Municipal 511 Notification
 Powered by Transnomis Solutions - Municipal511

This notification has been sent on behalf of CP Police Service.

Status: Created
Type: PUBLIC CROSSING BLOCKED BY STATIONARY TRAIN OR ENGINE
From: CP Police Service
Location: GALT 114.30 Road Closed - No Emergency Access

ID: CC2018002922
Start Time: 2018-05-01 07:34
End Time:
Contact: CP Police Service Communications Centre is open 24 hours a day, 1-800-716-9132
 Website URL: www.cppoliceservice.com
Public Link: <https://www.municipal511.ca/?lat=42.994000972222&lng=-81.245879&zoom=15>
Authorities Link: <https://authorities.municipal511.ca/Notification/Ack?n=18578&s=hzU2AZbd>

Please notify CP Police Service of any activity that could constitute a threat to, or that interferes with, the safety of railway operations (e.g., construction, road or equipment maintenance work, and any controlled burns) taking place adjacent to CP right of way by calling 1-800-716-9132.

This notification service is provided by Transnomis Solutions Inc. (www.Transnomis.com), the provider of Municipal511 and Responder511 road information management and communications services.

PUBLIC CROSSING BLOCKED BY ...

BELLEVILLE 171.74
 - Road Closed - No Emergency Access

Data Layer CP Police Service Private
ID CC2018001256
Issue Type PUBLIC CROSSING BLOCKED BY STATIONARY TRAIN OR ENGINE
Priority High
Created 11 minutes ago By CP Police Service
Description PUBLIC CROSSING BLOCKED BY STATIONARY TRAIN OR ENGINE

9518
 (CPPSPriate) RailwayCrossing - BLOOR ST EAST (REGIONAL RD 2) and GRANDVIEW ST SOUTH

[Back To Group](#)
[More Information](#)

Map data ©2018 Google 1 km L Terms of Use Report a map error



Fire services

- Permitted burning
- Dry fire hydrants
- Resource locations
- Fire service areas

Dry Hydrant

Jessup Road 71m Southwest of Maple Grove Lane

Data Layer Fire Services

ID 2592802

Issue Type Dry Hydrant

Priority Medium

Created 2018-03-28 11:30 By Township of North Algoa Wilberforce

Updated 2018-03-28 11:58

Description Jessup Road Dry Hydrant

Website <http://www.nalgonawil.com...>

Contact ccmc@nalgonawil.com

Info

More Information

Permitted Burning

Road 103 100m Northwest of Erb's Road

Data Layer Permitted Burning

ID 2630194

Issue Type Permitted Burning

Priority Low

Created 2018-04-23 13:43 By Township Perth East Fire

Updated 2018-04-26 08:42

Start Time 2018-04-24 06:30

End Time 2018-04-27 20:30

Description

Custom Fields

Contact Email

Contact name DOLORES GLOSCHESKI

Contact Phone 519-500-7363

More Information

**Who's
Responding**

Municipal511 in next release

Perth County

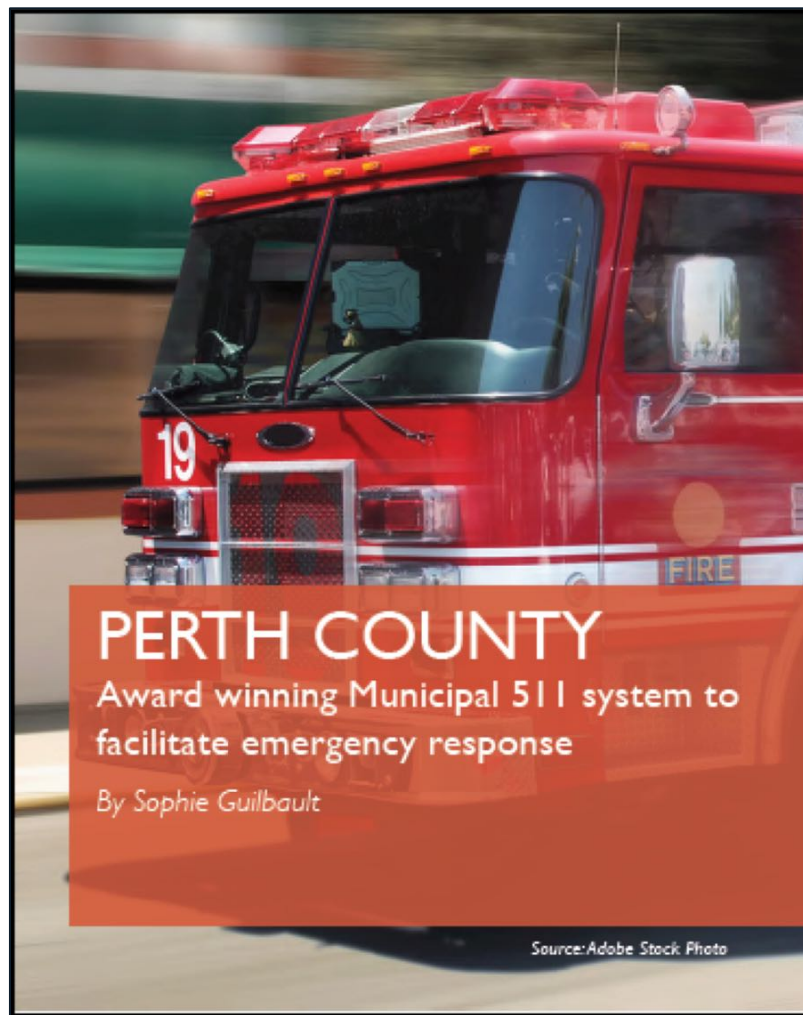
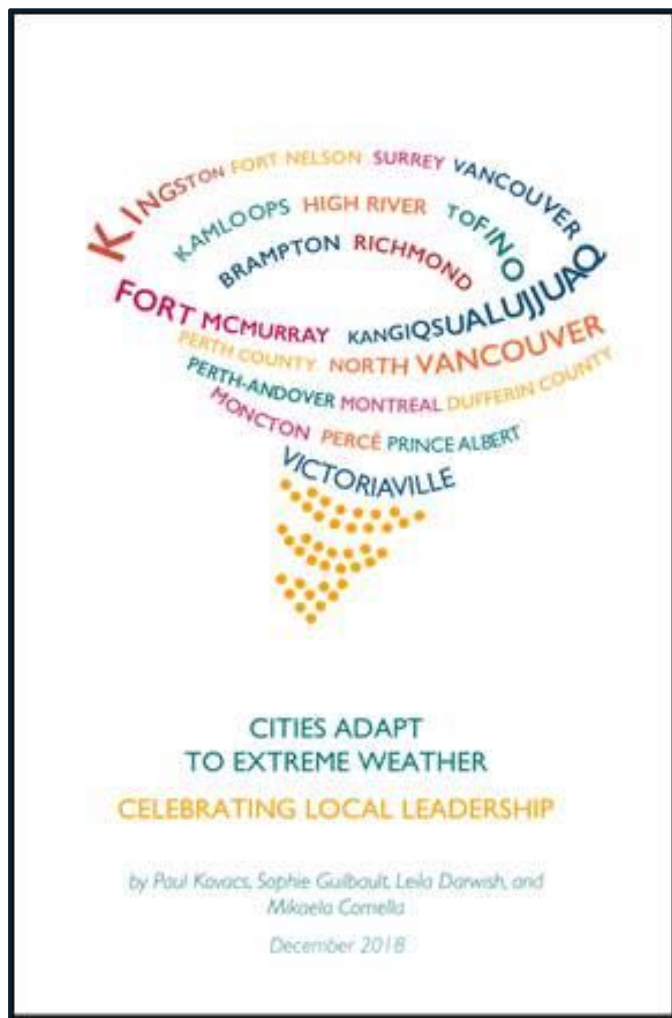
Cultivating Opportunity



Canadian Police, Paramedic and Fire Chiefs Emergency Management Committee - **Motorola Award of Excellence 2018**

This award has been established to recognize a standard of excellence that exemplifies the **combined efforts of police, fire, and paramedic services in preparing their agencies for any subsequent response to natural or human-caused disasters**. This dedication to emergency preparedness contributes to the quality of life in our communities.

Institute of Catastrophic Loss Reduction



Priced to connect all municipalities

- **Municipal511 and Responder511 “blended” service**
 - **10 cents per population per year***
 - Includes road and emergency services accounts for each municipality in the population paid for; and the OPP
- Services are available individually
 - Municipal511 - 7 cents*
 - Responder511 - 6 cents*

*Minimum of \$499 per municipal government served

Municipal511 Responder511 users are:

- Reducing emergency response times
- Reducing infrastructure damage
- Reducing road project and event conflicts
- Addressing public and industry needs
- Using improved communications methods every day, and by extension every incident and event
- Developing municipal resilience; where incidents occur, are responded to, and are recovered from; by municipal public works, emergency responders and emergency managers