

NOTES:  
 COPYRIGHT © 2020 COLBOURNE & KEMBEL ARCHITECTS INC. THIS DRAWING AND DESIGN ARE THE COPYRIGHT PROPERTY OF COLBOURNE & KEMBEL ARCHITECTS INC. AND MUST NOT BE COPIED, REPRODUCED, OR DISTRIBUTED IN WHOLE OR IN PART WITHOUT THE EXPRESS WRITTEN CONSENT OF THE ARCHITECT. ISSUED COPIES MUST BE RETURNED TO THE ARCHITECT UPON COMPLETION.  
 DRAWINGS MUST NOT BE SCALED. VERIFY DIMENSIONS ON SITE.

**8 BF RECEPTION COUNTER SECTION**

**7 BASEMENT RECEPTION BF COUNTER**

**6 MAIN RECEPTION BF COUNTER**

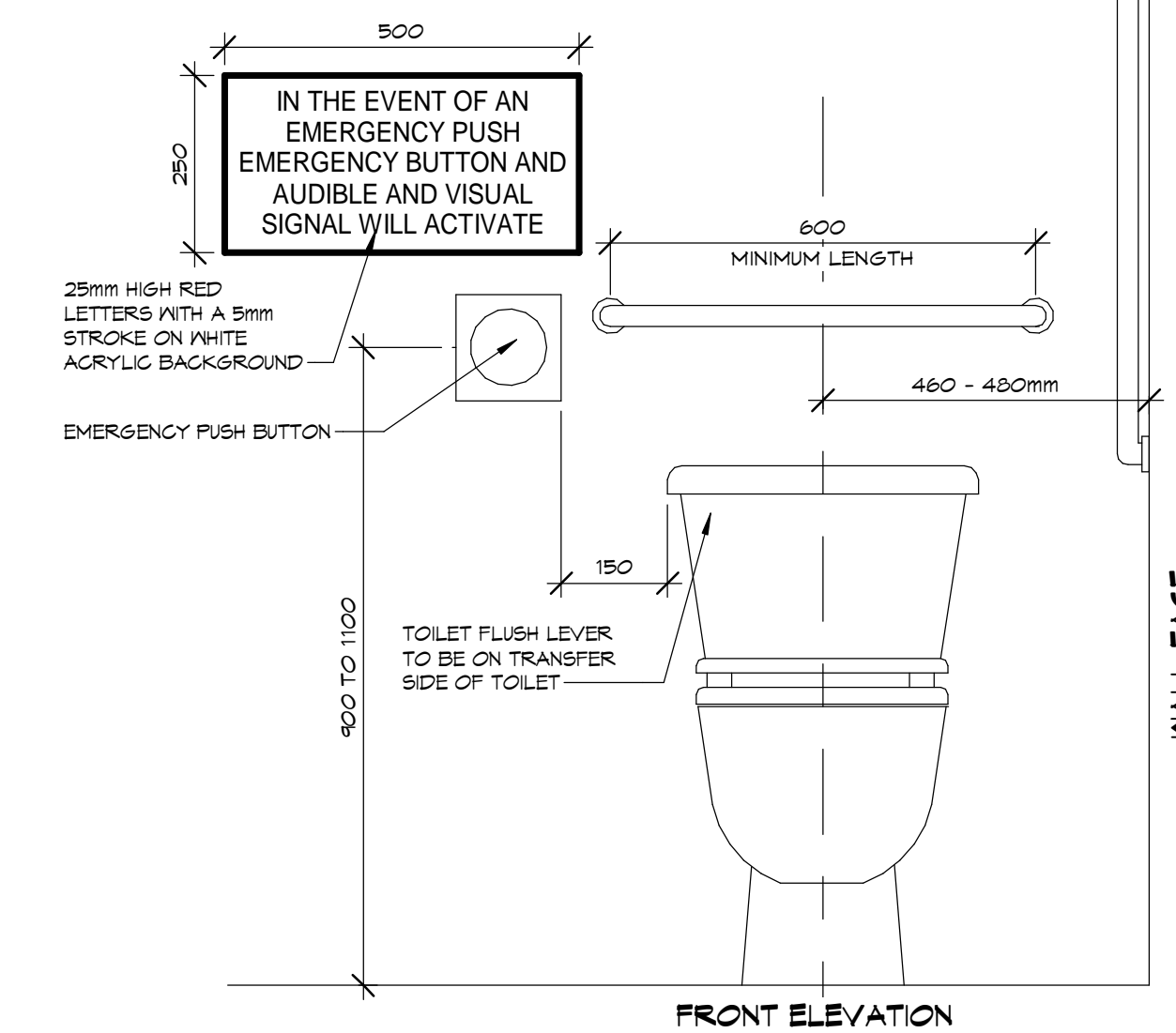
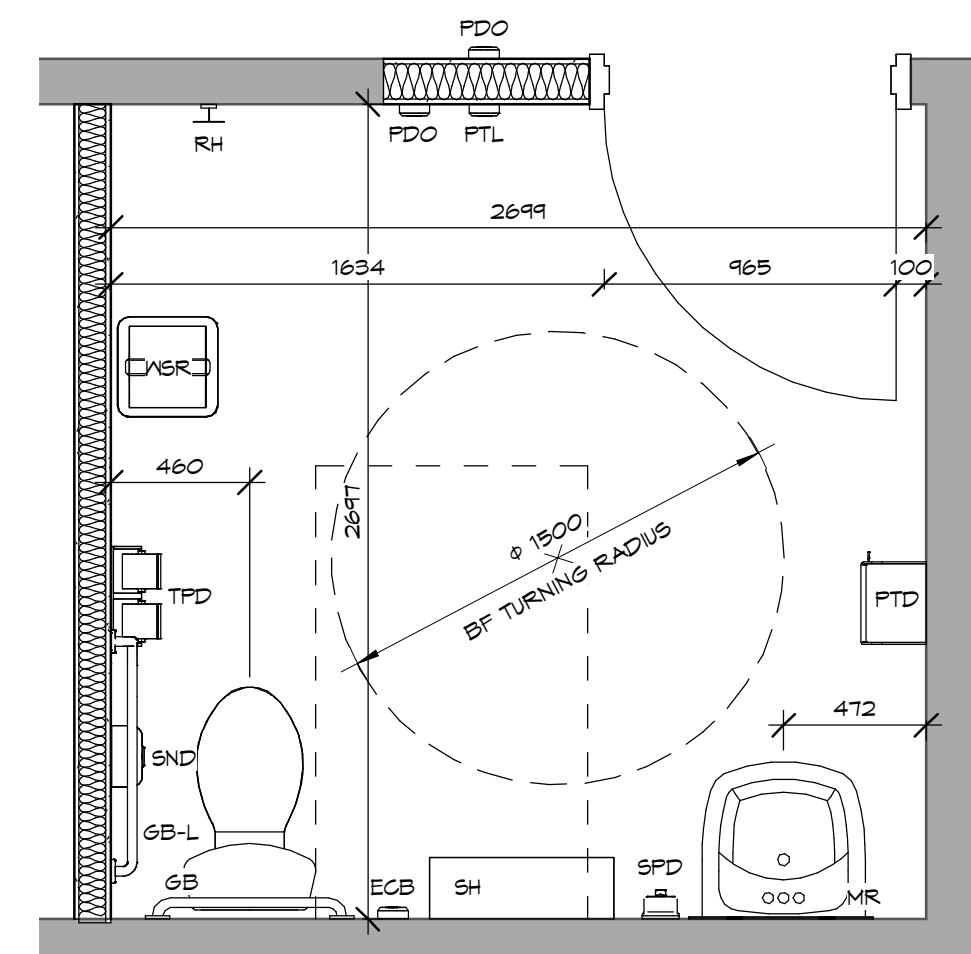
**3 B/F SINK MOUNTING HEIGHT - OBC\***

SCALE: 1:10  
 0m 0.2m 0.4m 0.6m 0.8m 1m

SCALE: 1:25  
 0m 0.5m 1m 1.5m 2m 2.5m

SCALE: 1:25  
 0m 0.5m 1m 1.5m 2m 2.5m

SCALE: 1:10  
 0m 0.2m 0.4m 0.6m 0.8m 1m

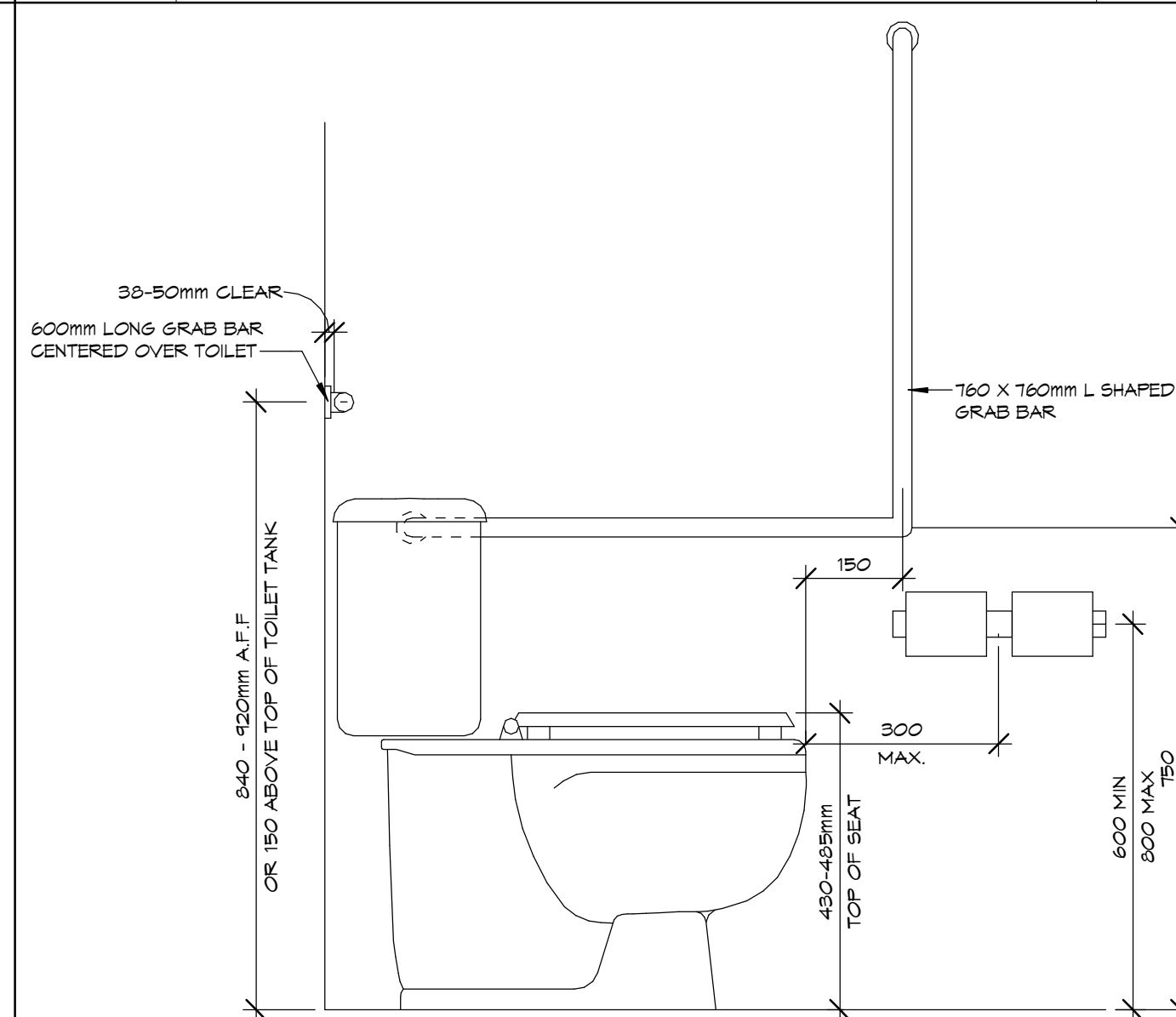
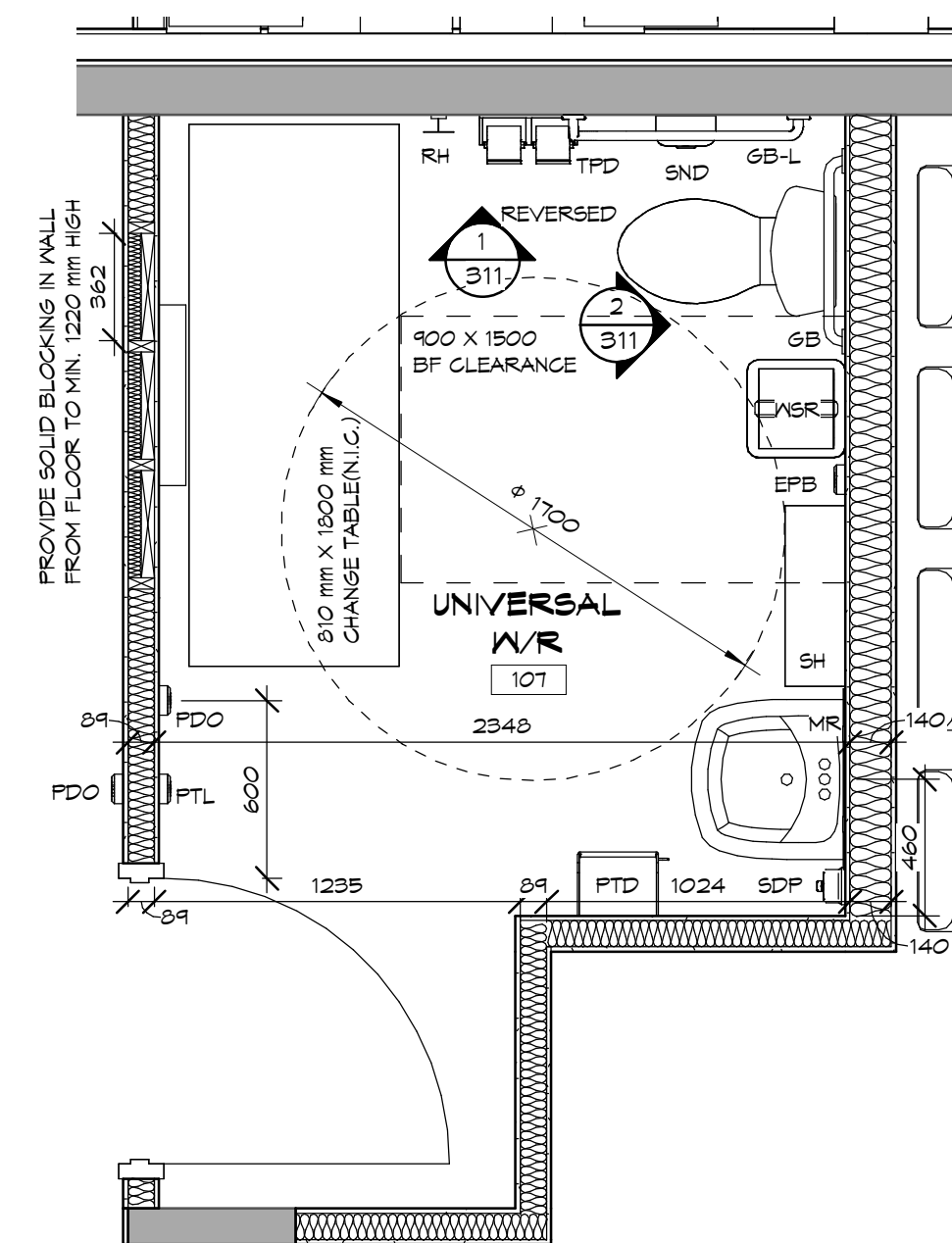
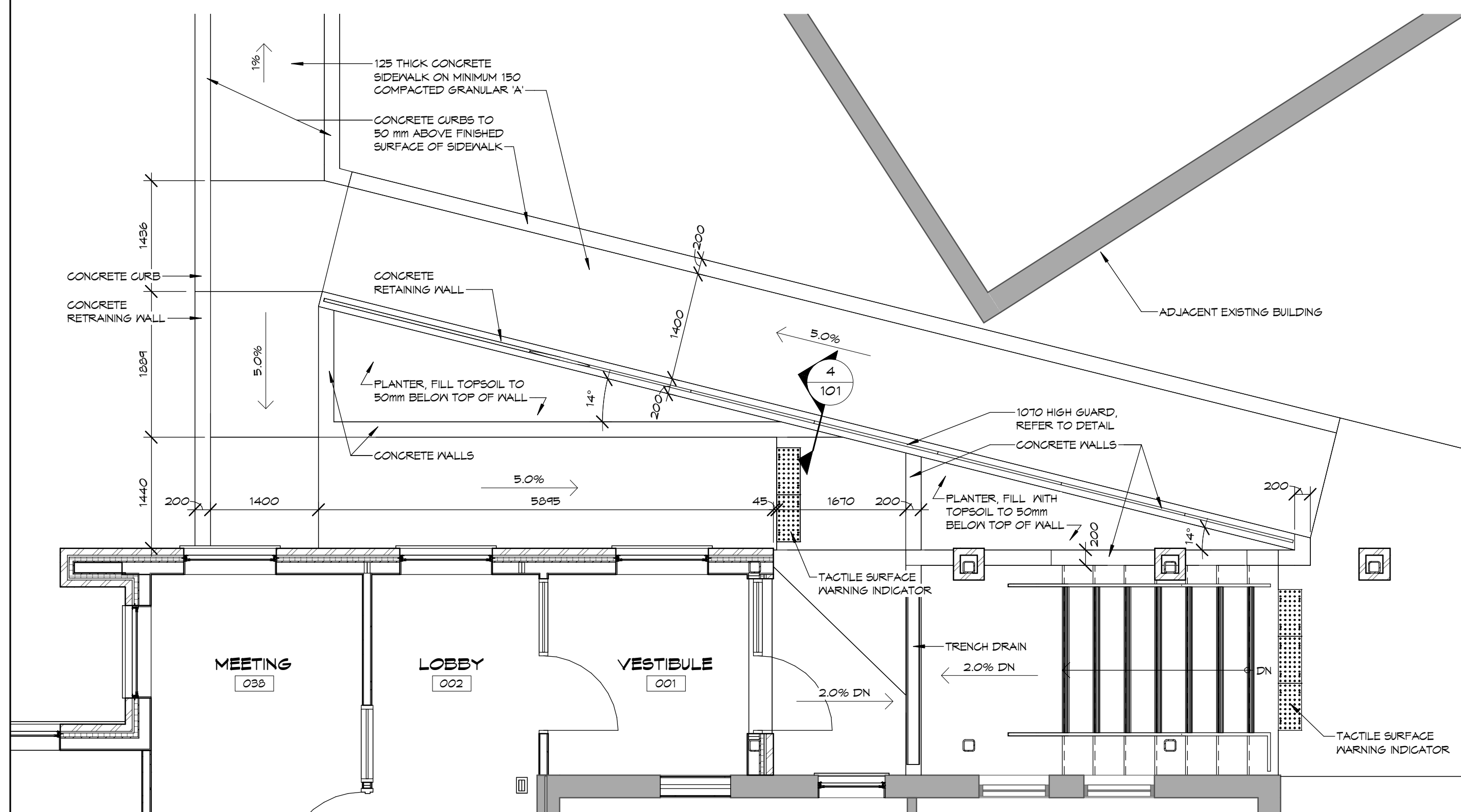


**5 BASEMENT BF WASHROOM\***

**2 B/F TOILET FRONT ELEVATION\***

SCALE: 1:25  
 0m 0.5m 1m 1.5m 2m 2.5m

SCALE: 1:10  
 0m 0.2m 0.4m 0.6m 0.8m 1m



NOTES:  
 1. MOUNT SOAP AND TOWEL DISPENSERS, HAND DRYERS, VENDING MACHINES AND WASTE RECEPTACLES WITH THEIR OPERATING DEVICES (GRANKS, LEVERS, BUTTONS, SLOTS, ETC.) AT HEIGHTS STIPULATED BY THE ONTARIO BUILDING CODES BARRIER FREE DESIGN SECTION.  
 2. ALL GRAB BARS TO BE 50 - 40mm DIA. AND HAVE SLIP RESISTANT SURFACE.  
 3. FINISH TYPE 304 STAINLESS STEEL WITH A SATIN FINISH AND FINED GRIP W/ CONCEALED MOUNTING TO BE INSTALLED TO RESIST A LOAD OF AT LEAST 1.2KN APPLIED VERTICALLY OR HORIZONTALLY.

**9 EXTERIOR RAMP PLAN DETAIL**

**4 UNIVERSAL WASHROOM\***

**1 B/F TOILET SIDE ELEVATION\***

SCALE: 1:50  
 0m 1m 2m 3m 4m 5m

SCALE: 1:25  
 0m 0.5m 1m 1.5m 2m 2.5m

SCALE: 1:10  
 0m 0.2m 0.4m 0.6m 0.8m 1m

NO. | BY | REVISIONS/SUBMISSIONS | DATE



PROJECT: South Frontenac Office Expansion

4432 George St, Sydenham, ON

DRAWING: ACCESSIBILITY DETAILS

SCALE: As Indicated

PROFESSIONAL SEAL	DRAWN: JM	DATE: OCT 2023
	CHECKED: TC	PRINTED: 24/04/17
	REVIEWED: TC	DRAWING NO.:
	PROJECT NO.:	23032
		<b>AB</b>

NOT FOR PERMIT OR CONSTRUCTION WITHOUT SEAL AND ISSUED NOTE