



**Accessibility Advisory Committee
Monday, February 26, 2018 – 10:00 a.m.
Township of South Frontenac Council Chamber
4432 George Street, Sydenham**

AGENDA

Page

- 1. Call to Order**
- 2. Election of Officers**
 - a) Election of Chair
 - b) Election of Vice Chair
- 3. Adoption of the Agenda**
 - a) **That** the agenda for the February 26, 2018 meeting of the Joint Frontenac Accessibility Advisory Committee be approved.
- 4. Disclosure of Pecuniary Interest and General Nature Thereof**
- 5. Adoption of Minutes**
 - a) Minutes of Meeting held November 13, 2017
That the minutes of the Joint Frontenac Accessibility Advisory Committee meeting held November 13, 2017 be adopted.
- 6. Deputations and/or Presentations**
- 7. Reports to the Accessibility Advisory Committee**
 - a) **2018-035**
Frontenac Accessibility Advisory Committee
Quarterly Update Report
This report is for information purposes only.
 - b) **2018-011**
Verona Trailhead Design Concept
Feedback is being sought from the Committee
- 8. Communications**

3 - 7

8 - 44

45 - 94

9. Other Business

10. Next Meeting

11. Adjournment



**Joint Accessibility Advisory Committee Meeting Minutes
November 13, 2017**

A meeting of the Frontenac Joint Accessibility Advisory Committee (FAAC) was held at the Township of South Frontenac's Council Chambers, 4432 George Street, Sydenham on Monday, November 13, 2017 at 10:00 AM

Present: Neil Allen, Community Representative, South Frontenac, Chair
Margaret Knott, Community Representative, Frontenac Islands, Vice Chair
Kurt Halliday, Community Representative, Central Frontenac
Ed Schlievert, Community Representative, North Frontenac
David Yerxa, Community Representative at large
Councillor Tom Dewey, Council Liaison
Councillor John McDougall

Staff Jannette Amini, County of Frontenac
Sherry Corneil, Township of South Frontenac
Donna Longmire, Township of Central Frontenac
Eric Korhonen, Township of North Frontenac

1. Call to Order

The Chair called the meeting to order at 10:06 a.m.

2. Adoption of the Agenda

Moved By: Mr. Yerxa
Seconded By: Mr. Schlievert

That the agenda for the November 13, 2017 meeting of the Joint Frontenac Accessibility Advisory Committee be approved.

Carried

3. Disclosure of Pecuniary Interest and General Nature Thereof

There were none.

c) **2017-143**
Frontenac Accessibility Advisory Committee
Accessible Signage along the K&P Trail

Moved By: Councillor Dewey
Seconded By: Mr. Yerxa

Be It Resolved That the Frontenac Accessibility Advisory Committee support the proposed signage for the Frontenac K&P Trail attached as Appendix A to this report.

Carried

It was suggested that an icon for cell service availability also be placed in the legend of the sign.

It was noted that the recent rains have carried stones away from a portion of the trail near Sharbot Lake where it ends between Clement Road and Wagner Road and as such, there is a large gap in the trail. Concerns were expressed that if a person were to walk to close to the edge, it may be soft underneath and the stones may give way and someone with a visual impairment would not see it.

Ms. Amini noted that the County has an agreement with the Eastern Ontario Trails Alliance to maintain the trail.

With respect to suggestions made regarding the Verona property, the Committee was advised that there is a public Open House next Monday, November 20 from 6:30pm - 8:30pm at the Verona Lions Centre - 4504 Verona Sand Road to provide input on the proposed amenities and design of the Verona Trailhead as well as to share perspectives on access to the K&P Trail from the Trailhead facility.

d) **2017 Celebrating Accessibility Awards**

It was suggested that this year's award recognize the senior's apartment complex on Wolfe Islands which officially opens in 2 weeks. Although this is a municipal facility, there is a fund raising component associated with this project which has been led by the committee which is composed of 5 citizens, the Mayor and CAO. This committee met weekly during early mornings and developed the Charter for the project. It was also noted that the land for the project was generously donated by Mr. John Weatherall who, along with his wife, also was responsible for initiating the discussion of seniors housing on Wolfe Island by having a vision of helping seniors with special needs.

Moved By: Mr. Yerxa
Seconded By: Mr. Halliday

That Mr. John Weatherall be selected as the 2017 recipient of the County of Frontenac Celebration of Accessibility Award

Carried

e) Township of North Frontenac Municipal Council Chamber

The Committees input was sought regarding the development of the new municipal Council Chamber.

The Committee reviewed the plans provided in the agenda package. It was noted that the plans appear to be similar to the Council Chamber in South Frontenac and if so, it was advised that the lighting in the South Frontenac Council Chamber is inadequate. It was also noted that when the screen is lowered for presentations, it hides the Coat of Arms.

It was suggested that during Council meetings, staff ensure hard copies of the agenda are available for those in the audience who have a visual disability as it is much easier to look at a handout.

Noting that the sketch which identifies the location of tables and equipment was not readable on the agenda link, Ms. Amini will email the diagram to committee members for comments and feedback.

7. Communications



8. Other Business

Mr. Halliday provided the Committee with information on “access now” which is a mobile app for android devices that makes it possible to describe accessibility features at local sites so people know what the level of accessibility of a site is. The app is free of charge.

Mr. Allen noted the accessibility upgrades that have been made to Point Park. Specifically, he noted issues during the summer when the automatic doors had been turned off during summer camp operations. He was able to speak with the camp councillor who had informed him that they had decided to shut the automatic doors to the washrooms off during camp times due to the kids continually using them. He advised the councillor that if someone is there during that time and there is no power to the door, the person cannot use it. This has since been rectified by South Frontenac staff. This is an accessibility awareness issue and staff need to speak to the councillors.

Mr. Halliday noted the library and fire hall which is great inside but outside there is no pad for someone to pull up and unload. Its just rough gravel and asked if this could be added to Centrals Frontenac’s Appendix B.

9. Next Meeting

The next meeting of the Joint Frontenac Accessibility Advisory Committee was set for Monday, February 12, 2018.

10. Adjournment

Moved By: Mr. Halliday
Seconded By: Mr. Yerxa

That the meeting hereby adjourn at 11:27 a.m.

Carried



Report 2018-035

Committee Report

To: Chair and Members of the Frontenac Accessibility Advisory Committee

From: Jannette Amini, Manager of Legislative Services/Clerk

Date of meeting: February 26, 2018

Re: Frontenac Accessibility Advisory Committee – Update Report

Recommendation

This report is for information purposes only.

Background

The Accessibility Advisory Committee is mandated to assist County and Township Councils in the County of Frontenac in enabling persons with disabilities to have equal access to all opportunities within the County as well as work with Council and the community at large to identify and address the needs of persons with disabilities within the community.

Comment

The follow is a list of accessibility updates and activities that have occurred during Q4 of 2017 and Q1 of 2018:

1. Updates from the Accessibility Directorate of Ontario

Consultation of Accessibility Advisory Committees

Under the Accessibility for Ontarians with Disabilities Act (AODA), municipalities with 10,000 or more residents are required to have a Municipal Accessibility Advisory Committee. The role of the Committees is to advise council about the requirements and implementation of accessibility standards, review site plans, and perform other functions as specified in the AODA.

Under the AODA, the Accessibility Directorate of Ontario must review the standards of the Act. Although not legislatively required, the Directorate believes that a fulsome review of Accessibility Advisory Committees is warranted at this time and as such, is moving forward with a consultation of the Accessibility Advisory Committees (including an online survey and focus groups). The consultation will be conducted on behalf of the Directorate by The Strategic Counsel (a notable market research firm). The consultation, which began in January 2018, will be conducted over approximately five months with the goal of this consultation being to learn more

about the work of Accessibility Advisory Committees, what conditions are required for them to be successful, and how the Directorate might better support Committees going forward.

The County of Frontenac was contact January 23, 2018 by The Strategic Counsel noting that it is conducting a consultation of municipal Accessibility Advisory Committees on behalf of the Accessibility Directorate. The purpose of the consultation is to learn more about the committees' work, what conditions are required for them to be successful, and how the Accessibility Directorate might better support them, with the first step being an online survey which members were requested to complete. The Strategic Counsel requested that members complete the survey by Friday, February 9, 2018.

A copy of the correspondence, including links to the survey, was forwarded to members of the Frontenac Accessibility Advisory Committee on January 24, 2018. It was also requested that Clerks of municipalities also complete the survey. The Clerk for the County of Frontenac completed the survey on January 23rd.

The Hon. David C. Onley appointed third reviewer of the AODA

Ontario has appointed the Honourable David C. Onley to conduct the third review of the Accessibility for Ontarians with Disabilities Act (AODA).

The reviewer will consult with the public and will analyze accessibility progress made in other jurisdictions. The review will be completed by the end of 2018 and will consider the evolution of the current AODA and its goals for an accessible Ontario by 2025 and beyond.

David C. Onley is a former broadcast journalist. He served as the 28th Lieutenant Governor of Ontario from 2007 to 2014, and was the first person with a physical disability in the role. He has consulted on accessibility in the private and public sector, including as Special Advisor on Accessibility. Mr. Onley has been inducted into the Canadian Disability Hall of Fame and was named to the Order of Canada in 2017.

Ensuring that everyone in Ontario can contribute to their community and achieve their goals is part of Ontario's plan to create fairness and opportunity during this period of rapid economic change. The plan includes a higher minimum wage and better working conditions, free tuition for hundreds of thousands of students, easier access to affordable child care, and free prescription drugs for everyone under 25 through the biggest expansion of medicare in a generation.

2. Accessibility Compliance Report

2017 was a reporting year for AODA compliance for businesses and non-profit organizations with 20 or more employees, and designated public-sector organizations. The compliance report confirms that the organization has met its current accessibility requirements under the Accessibility for Ontarians with Disabilities Act (AODA).

The County of Frontenac submitted its report on December 8th, 2017 and is in compliance. A copy of the compliance report is attached to this report as Appendix A.

The Township of North Frontenac submitted its report on November 20th, 2017 and is in compliance. A copy of the compliance report is attached to this report as Appendix B.

The Township of South Frontenac submitted its report on November 21st, 2017 and is in compliance. A copy of the compliance report is attached to this report as Appendix C.

The Township of Central Frontenac submitted its report on December 15th, 2017 and is in compliance. A copy of the compliance report is attached to this report as Appendix D.

3. Community Accessibility Upgrades – Update

Verona Trail Head

In 2016, Frontenac County Council provided direction to purchase and remediate the property at 6503 Road 38 (corner of Bellrock Rd.) for the purpose of developing a public trail access point. This property is located near the southern end of the village of Verona, and is referred to as the “Verona Trailhead”. The public consultation phase for the vision of this trailhead has begun and there is a separate report on today’s Committee Agenda for feedback and consultation with the FAAC.

K&P Trail Signage

At its meeting held November 13, 2017, the FAAC received a report from Mr. Richard Allen, Manager of Economic Development seeking input from the Committee regarding signage for the K&P Trail.

The draft sign was presented to the Committee, which was in line with the Design of Public Spaces regulations. These proposed signs were to be 18”x24” and posted at almost every intersection along the trail. It was also noted that depending on available funding, it may take several years to implement signage along the entire length of the trail; however these signs are required by legislation as part of the current construction project from Tichborne to Sharbot Lake. The signs were adapted to be consistent with the City of Kingston signs to make wayfinding and navigation from the City portion to the County portion of the trail more user friendly and accessible, and users would not be required to decipher two different types of signage.

To date, Mr. Allen has advised that because each sign is unique, they are required to be designed independently. The work has begun, with an anticipated installation date of spring, 2018.

Proposed Trail for Kennebec Shores Waterfront Community – Central Frontenac

There is a proposed trails development being investigated for the Kennebec Shores Waterfront Community in Central Frontenac and three volunteer community organizations have come forward to identify their interest, and to work on this project:

Central Frontenac Township Council has referred this proposed development back to staff for input from Public Works, the Fire Chief and Facilities for comment and recommendations going forward; however to date, no details have been provided to the Accessibility Advisory Committee by Central Frontenac staff. A map outlining the proposed site is attached to this report as Appendix E.

Sustainability Implications

Creating barrier-free communities through accessibility planning will enhance the County's goal of sustainability in both the social and economic pillars of the County's sustainability plan. As stated in *Directions for Our Future*, social sustainability is based on equity, diversity, connectivity, democracy and a good quality of life. It further states that economic development takes health, community, education, and environmental and social objectives into account.

Financial Implications

There are no direct financial implications associated with this report.

Organizations, Departments and Individuals Consulted and/or Affected

Eric Korhonen, Township of North Frontenac
Donna Longmire, Township of Central Frontenac
Sherry Corneil, Township of South Frontenac
Darlene Plumley, Township of Frontenac Islands



How to complete your accessibility compliance report

You must complete the mandatory fields on each page before you can move to the next page. Mandatory fields are marked with an asterisk (*).

To start, save the form on your local computer and be sure to open it with Adobe Reader. You can save the form at any point in the process and return to it later. You may distribute the form within your organization for input before submitting.

You need the following to file your accessibility compliance report:

- Nine-digit **Business number (BN9)**, that identifies your organization with the Canada Revenue Agency (found on federal and provincial tax returns). In the rare case that an organization doesn't have a Business number (BN9), an AODA identifier (assigned by the Accessibility Directorate of Ontario) would be used in its place.
- Your **Organization category**
 - if you are a Business or a Non-profit, your Organization category is Business/Non-profit
 - if you are a municipality, or a hospital, college, university, school board, public transportation provider (under [Schedule 1 of the regulation 191/11](#)), or an agency, board or commission (under [Column 1 of Table 1 of Ontario Regulation 146/10](#)), your Organization category is Designated Public Sector
 - **Note:** If you select the wrong organization category, you may see questions that do not apply to you. You will need to correct the category and enter your data again to successfully submit your report.
- Number of employees in your organization
- A person with authority to bind your organization (e.g. a director or senior officer) must certify your organization's accessibility compliance report as complete and accurate.

You are able to file on behalf of up to 20 organizations using one form. To do so you will need each organization's business number (BN9) or AODA identifier, number of employees and address. All organizations filing under the same form must have the same **Organization category** (e.g. Business/Non-profit), **Number of employees range** (e.g. 20-49, 50+), **certifier**, and all answers to the accessibility compliance questions must be the same. If not, you will need to complete a separate form for each organization.

If you require the accessibility compliance report in an alternate format, please contact accessibility@ontario.ca

Note: Users of assistive technology should pull up a list of buttons to get a list of the links on the form.

Begin your report

Follow these steps to complete your form:

- Download and open the form
- Save the form on your computer and open it with Adobe Reader.
- Enter your organization's information then select **Next**.
- If you need information about your organization's requirements, click on the appropriate link in section B: **Understand your accessibility requirements**. This will bring you to our website where you can see your past, current and future requirements.
- The questions you will see on the form are based on the accessibility requirements that apply to your **Organization category** (e.g. Business/non-profit) and **Number of employees range** (e.g. 20-49, 50+).
- Click **Yes** (if you are in compliance) or **No** (if you are not in compliance) for each question. You may add comments in the comment box below each question.
- Each report question has links to:
 - The regulation section that is related to that question.
 - Helpful resources to help you understand and comply with the requirements.
- Once you have answered all of the questions, click **Save form** at the bottom of the page before clicking **Next**.
- Review the accessibility compliance report summary.

Certify and submit your report

- Complete the information in the **Certifier Information** section
- The certifier must:
 - Review all information entered on the form for completeness and accuracy.
 - Check the three boxes to indicate their authority as a certifier in your organization.
- Enter information for a primary contact in your organization. This person may be the certifier or a different person.
- You may save the form at any time by clicking the **Save form** button.
- When you are ready to submit your report, click the **Save and submit** button. You will be prompted to save the form on your local computer first and then it will be submitted.
- Wait for a confirmation prompt that either confirms submission or indicates any problems.
- Once you have successfully submitted your certified report, an email will be sent to the Certifier and the Primary Contact with a confirmation number and an accessible PDF copy of your organization's accessibility compliance report.

If you have any questions please contact the AODA Contact Centre (ServiceOntario) at:

Toll Free Phone: 1-866-515-2025 TTY Toll free: 1-800-268-7095
Phone: 416-849-8276 TTY: 416-325-3408



Instructions

All information you provide is subject to the *Freedom of Information and Protection of Privacy Act*.

Fields marked with an asterisk (*) are mandatory.

A. Organization information

Organization category * Designated Public Sector	Number of employees range * 50+ employees	Reporting year 2017
---	--	------------------------

Business details

Organization legal name * County of Frontenac	Number of employees in Ontario * Help 459
--	--

Business number (BN9) * [Help](#) Check this box if you have received an AODA identifier from the Accessibility Directorate of Ontario
867959249

Check if operating/business name is same as legal name

Organization operating/business name County of Frontenac	Language preference for communications * English
---	---

Sector that best describes your organization's principal business activity * [Help](#)
91 - Public administration

Subsector (if possible) 913 - Local, municipal and regional public administration	Industry group (if possible) 9139 - Other local, municipal and regional public administr
--	---

Mailing address

Address where letters can be sent to the person responsible for coordinating the organization's AODA compliance activities.

Country * Canada USA International

Type of address * Street address Street address served by route Other

Unit number	Street number * 2069	Street name * Battersea Road
-------------	-------------------------	---------------------------------

Street type	Street direction	City * Glenburnie	Province * ON (Ontario)
-------------	------------------	----------------------	----------------------------

Postal code *
K0H 1S0

Business address

(Address at which letters can be sent to the company director/officer accountable for the organization's compliance with the AODA.)

Check if business address is same as mailing address

Country * Canada USA International

Type of address * Street address Street address served by route Other

Unit number	Street number * 2069	Street name * Battersea Road
-------------	-------------------------	---------------------------------

Street type	Street direction	City * Glenburnie	Province * ON (Ontario)
-------------	------------------	----------------------	----------------------------

Postal code *
K0H 1S0

Use the "Add new organization" button to add additional organizations to which this accessibility report is to be applied (maximum 20).

Note: All organizations must have the same organization category, number of employees range, compliance answers and certifier, and have different business numbers, in order to file under the same form.



Organization category Designated Public Sector	Number of employees range 50+
Filing organization legal name County of Frontenac	
Filing organization business number (BN9) 867959249	

Fields marked with an asterisk (*) are mandatory.

B. Understand your accessibility requirements

Before you begin your report, you can learn about your accessibility requirements at ontario.ca/accessibility

Additional accessibility requirements apply if you are:

C. Accessibility compliance report questions

Instructions

Please answer each of the following compliance questions. Use the Comments box if you wish to comment on any response.

If you need help with a specific question, click the help links which will open in a new browser window. Use the link on the left to view the relevant AODA regulations and the link on the right to view relevant accessibility information resources.

Make your employment practices accessible

1. Does your organization notify its employees and the public about the availability of accommodations during the recruitment process? *
- Yes No

[Read O. Reg. 191/11 s.22 - 24: Recruitment](#)

[Learn more about your requirements for question 1](#)

Comments for question 1

2. Does your organization provide employees with updated information about its policies to support employees with disabilities? *
- Yes No

[Read O. Reg. 191/11 s.25: Informing employees of supports](#)

[Learn more about your requirements for question 2](#)

Comments for question 2

3. When requested, does your organization provide employees with disabilities information in an accessible format or with communication supports? *
- Yes No

[Read O. Reg. 191/11 s.26: Accessible formats and communication supports for employees](#) [Learn more about your requirements for question 3](#)

Comments for question 3

4. Does your organization prepare individualized workplace emergency response information for employees with disabilities? * Yes No

[Read O. Reg. 191/11 s.27: Workplace emergency response information](#)

[Learn more about your requirements for question 4](#)

Comments for question 4

Make new or redeveloped public spaces accessible

5. Since January 1, 2016, has your organization constructed new or redeveloped existing recreational trails that you intend to maintain? * Yes No
(if Yes, you will be required to answer additional questions)

[Read O. Reg. 191/11 Part IV.1: Design of Public Spaces Standards - Definitions](#)

[Learn more about your requirements for question 5](#)

5.a. Did your organization consult with the public and persons with disabilities prior to constructing new or redeveloping existing recreational trails as outlined in the s.80(8) of the Integrated Accessibility Standards Regulation (IASR)? * Yes No

[Read O. Reg. 191/11 s.80\(8\): Consultation, recreational trails](#)

[Learn more about your requirements for question 5.a](#)

Comments for question 5.a

5.b. Does your organization ensure that its new or redeveloped recreational trails meet the technical requirements as outlined s.80(9) of the IASR? * Yes No

[Read O. Reg. 191/11 s.80\(9\): Technical requirements for trails](#)

[Learn more about your requirements for question 5.b](#)

Comments for question 5.b

6. Since January 1, 2016, has your organization constructed new or redeveloped existing beach access routes that you intend to maintain? * Yes No
(if Yes, you will be required to answer additional questions)

[Read O. Reg. 191/11 Part IV.1: Design of Public Spaces Standards - Definitions](#)

[Learn more about your requirements for question 6](#)

6.a. Does your organization ensure that its new or redeveloped beach access routes meet the technical requirements as outlined in IASR s.80(10)? * Yes No

[Read O. Reg. 191/11 s.80\(10\): Technical requirements for beach access routes](#)

[Learn more about your requirements for question 6.a](#)

Comments for question 6.a

7. Do your new or redeveloped recreational trail and/or beach access routes include boardwalks? * Yes No
(if Yes, you will be required to answer additional questions)

7.a. Where new or redeveloped recreational trails and/or beach access routes have a boardwalk, does the boardwalk meet the technical requirements as outlined in s.80(12) of the IASR? * Yes No

[Read O. Reg. 191/11 s.80\(12\): Boardwalks](#)

[Learn more about your requirements for question 7.a](#)

Comments for question 7.a

8. Do your new or redeveloped recreational trails and/or beach access routes include ramps? * Yes No
(if Yes, you will be required to answer additional questions)

[Read O. Reg. 191/11 s.80\(13\): Ramps](#)

[Learn more about your requirements for question 8](#)

8.a. Where new or redeveloped recreational trails and/or beach access routes have a ramp, does the ramp meet the technical requirements as outlined in s.80(13) of the IASR? * Yes No

[Read O. Reg. 191/11 s.80\(13\): Ramps](#)

[Learn more about your requirements for question 8.a](#)

Comments for question 8.a

9. Since January 1, 2016, has your organization constructed new or redeveloped existing outdoor public use eating areas that you intend to maintain? * Yes No
(if Yes, you will be required to answer additional questions)

[Read O. Reg. 191/11 s.80\(17\): Outdoor public use eating areas, general requirements](#)

[Learn more about your requirements for question 9](#)

9.a. Does your organization ensure that where they construct or redevelop outdoor public use eating areas that they meet the requirements as outlined in s.80(17) of the IASR? * Yes No

[Read O. Reg. 191/11 s.80\(17\): Outdoor public use eating areas, general requirements](#) [Learn more about your requirements for question 9.a](#)

Comments for question 9.a

10. Since January 1, 2016, has your organization constructed new or redeveloped existing outdoor play spaces that you intend to maintain? * Yes No
(if Yes, you will be required to answer additional questions)

10.a. When constructing new or redeveloping existing outdoor play spaces, did your organization consult with the public and persons with disabilities on the needs of children and caregivers, and if you represent a municipality did your organization consult with the accessibility advisory committee where one was established as outlined in s.80(19) of the IASR? * Yes No

[Read O. Reg. 191/11 s.80\(19\): Outdoor play spaces, consultation requirements](#)

[Learn more about your requirements for question 10.a](#)

Comments for question 10.a

10.b. Did your organization incorporate accessibility features when constructing a new or redeveloping an existing play space as outlined in s.80(20a) of the IASR? * Yes No

[Read O. Reg. 191/11 s.80\(20a\): Outdoor play spaces, accessibility in design](#)

[Learn more about your requirements for question 10.b](#)

Comments for question 10.b

10.c. Does your organization's new or redeveloped play spaces have a firm ground surface as outlined in s.80(20b) of the IASR? * Yes No

[Read O. Reg. 191/11 s.80\(20b\): Outdoor play spaces, accessibility in design](#)

[Learn more about your requirements for question 10.c](#)

Comments for question 10.c

11. Since January 1, 2016, has your organization constructed new or redeveloped existing exterior paths of travel that you intend to maintain? * Yes No
(if Yes, you will be required to answer additional questions)

11.a. Where applicable, do your newly constructed or redeveloped exterior paths of travel meet the technical and general requirements as outlined in s.80(21) – 80(31) of the IASR? * Yes No

[Read O. Reg. 191/11 s. 80\(21\) - 80\(31\): Exterior Paths of Travel](#)

[Learn more about your requirements for question 11.a](#)

Comments for question 11.a

12. Since January 1, 2016, has your organization constructed new or redeveloped existing off-street parking facilities that you intend to maintain? * Yes No
(if Yes, you will be required to answer additional questions)

12.a. When constructing new or redeveloping off-street parking facilities that you intend to maintain, do you ensure that the off-street parking facilities meet the accessibility requirements as outlined in s.80(32) – 80(37) of the IASR? * Yes No

[Read O. Reg. 191/11 s.80\(32\) - 80\(37\): Accessible Parking](#)

[Learn more about your requirements for question 12.a](#)

Comments for question 12.a

13. Since January 1, 2016, has your organization constructed a new or replaced an existing service counter? * Yes No
(if Yes, you will be required to answer additional questions)

13.a. Does your organization ensure that new or redeveloped service counters meet the technical requirements as outlined in s.80(41) of the IASR? * Yes No

[Read O. Reg. 191/11 s. 80\(41\): Service counters](#)

[Learn more about your requirements for question 13.a](#)

Comments for question 13.a

14. Since January 1, 2016, has your organization constructed new fixed queuing guides? * Yes No
(if Yes, you will be required to answer additional questions)

14.a. Does your organization ensure that new fixed queuing guides for obtaining services meet the technical requirements as outlined in s.80(42) of the IASR? * Yes No

[Read O. Reg. 191/11 s.80\(42\): Fixed queuing guides](#)

[Learn more about your requirements for question 14.a](#)

Comments for question 14.a

15. Since January 1, 2016, has your organization constructed new or redeveloped existing waiting areas? * Yes No
(if Yes, you will be required to answer additional questions)

15.a. Does your organization ensure that new or developed fixed seating waiting areas meet the technical requirements as outlined in s.80(43) of the IASR? * Yes No

[Read O. Reg. 191/11 s.80\(43\): Waiting areas](#)

[Learn more about your requirements for question 15.a](#)

Comments for question 15.a

16. Does your organization's public spaces have accessible elements in place as required under the Design of Public Spaces Standard of the IASR? * Yes No
(if Yes, you will be required to answer additional questions)

[Read O. Reg. 191/11 Part IV. 1: Design of public spaces standards](#)

[Learn more about your requirements for question 16](#)

16.a. Does your organization's multi-year accessibility plan include procedures for preventative and emergency maintenance of the accessible elements in public spaces, and for dealing with temporary disruptions when accessible elements are not in working order as outlined in s.80(44) of the IASR? * Yes No

[Read O. Reg. 191/11 s.80\(44\): Maintenance of accessible elements](#)

[Learn more about your requirements for question 16.a](#)

Comments for question 16.a

Provide accessible transportation services

17. Does your organization provide conventional transportation services? * Yes No
(if Yes, you will be required to answer additional questions)

[Read O. Reg. 191/11 Part IV - Transportation Standards: Definitions](#)

[Learn more about your requirements for question 17](#)

17.a. Does your organization have electronic pre-boarding announcements of the route, direction, destination or next major stop on its transportation vehicles, and do these announcements satisfy the requirements set out in section 51. O. Reg. 191/11? * Yes No

[Read O. Reg. 191/11 s.51\(2\): Pre-boarding announcements](#)

[Learn more about your requirements for question 17.a](#)

Comments for question 17.a

17.b. Does your organization ensure that all destination points or available route stops are announced through electronic means and legibly and visually displayed through electronic means? * Yes No

[Read O. Reg. 191/11 s.52\(2\) - 52\(3\): On-board announcements](#)

[Learn more about your requirements for question 17.b](#)

Comments for question 17.b

18. Does your organization provide specialized transportation services? * Yes No
(if Yes, you will be required to answer additional questions)

[Read O. Reg. 191/11 Part IV - Transportation Standards: Definitions](#)

[Learn more about your requirements for question 18](#)

18.a. Does your organization follow the eligibility requirements as outlined in section 63 of the Integrated Accessibility Standards Regulation? * Yes No

[Read O. Reg. 191/11 s.63: Categories of eligibility](#)

[Learn more about your requirements for question 18.a](#)

Comments for question 18.a

19. In the jurisdiction where you provide specialized transportation services, does another organization provide conventional transportation services? * Yes No
(if Yes, you will be required to answer additional questions)

19.a. Does your organization ensure that it does not charge more than the highest fare charged for conventional transportation services within the same jurisdiction? * Yes No

[Read O. Reg. 191/11 s.66: Fare parity](#)

[Learn more about your requirements for question 19.a](#)

Comments for question 19.a

19.b. Does your organization ensure that it has, at minimum, the same hours and days of service as any one of the conventional transportation service providers within the same jurisdiction? * Yes No

[Read O. Reg. 191/11 s.70: Hours of service](#)

[Learn more about your requirements for question 19.b](#)

Comments for question 19.b

20. Other than the requirements cited in the above questions, is your organization complying with all other requirements in effect under the Integrated Accessibility Standards Regulation? * Yes No

[Read O. Reg. 191/11: Integrated Accessibility Standards](#)

[Learn more about your requirements for question 20](#)

Comments for question 20



Organization category Designated Public Sector	Number of employees range 50+
Filing organization legal name County of Frontenac	
Filing organization business number (BN9) 867959249	

Fields marked with an asterisk (*) are mandatory.

D. Accessibility compliance report summary

Your responses to the questions on your accessibility report indicate that your organization is in compliance with AODA standards.

Your organization may be audited to verify compliance.

E. Accessibility compliance report certification

Section 15 of the *Accessibility for Ontarians with Disabilities Act, 2005* requires that accessibility reports include a statement certifying that all the required information has been provided and is accurate, signed by a person with authority to bind the organization(s).

Note: It is an offence under the Act to provide false or misleading information in an accessibility report filed under the AODA.

The certifier may designate a primary contact for the Accessibility Directorate to contact the organization(s); otherwise the certifier will be the main contact.

Certifier: Someone who can legally bind the organization(s).

Primary Contact: The person who will be the main contact for accessibility issues.

Acknowledgement

- I certify that I have the authority to bind all organizations specified in Section A of this form, *
- I certify that all the required information has been included in this report, and, *
- I certify that the information in this report is accurate. *

Certification date (yyyy-mm-dd) * **2017-12-08**

Certifier information

Last name * Amini		First name * Jannette		
Position title * Administrator	Business phone number * 613 548-9400	Extension 302	<input type="checkbox"/> Check here if TTY	
Email * jamini@frontenacounty.ca		Alternate phone number	Extension	Fax number

Primary contact for the organization(s)

- Check if the primary contact is same as the certifier

Last name * Amini		First name * Jannette		
Position title * Administrator	Business phone number * 613 548-9400	Extension 302	<input type="checkbox"/> Check here if TTY	
Email * jamini@frontenacounty.ca		Alternate phone number	Extension	Fax number



How to complete your accessibility compliance report

You must complete the mandatory fields on each page before you can move to the next page. Mandatory fields are marked with an asterisk (*).

To start, save the form on your local computer and be sure to open it with Adobe Reader. You can save the form at any point in the process and return to it later. You may distribute the form within your organization for input before submitting.

You need the following to file your accessibility compliance report:

- Nine-digit **Business number (BN9)**, that identifies your organization with the Canada Revenue Agency (found on federal and provincial tax returns). In the rare case that an organization doesn't have a Business number (BN9), an AODA identifier (assigned by the Accessibility Directorate of Ontario) would be used in its place.
- Your **Organization category**
 - if you are a Business or a Non-profit, your Organization category is Business/Non-profit
 - if you are a municipality, or a hospital, college, university, school board, public transportation provider (under [Schedule 1 of the regulation 191/11](#)), or an agency, board or commission (under [Column 1 of Table 1 of Ontario Regulation 146/10](#)), your Organization category is Designated Public Sector
 - **Note:** If you select the wrong organization category, you may see questions that do not apply to you. You will need to correct the category and enter your data again to successfully submit your report.
- Number of employees in your organization
- A person with authority to bind your organization (e.g. a director or senior officer) must certify your organization's accessibility compliance report as complete and accurate.

You are able to file on behalf of up to 20 organizations using one form. To do so you will need each organization's business number (BN9) or AODA identifier, number of employees and address. All organizations filing under the same form must have the same **Organization category** (e.g. Business/Non-profit), **Number of employees range** (e.g. 20-49, 50+), **certifier**, and all answers to the accessibility compliance questions must be the same. If not, you will need to complete a separate form for each organization.

If you require the accessibility compliance report in an alternate format, please contact accessibility@ontario.ca

Note: Users of assistive technology should pull up a list of buttons to get a list of the links on the form.

Begin your report

Follow these steps to complete your form:

- Download and open the form
- Save the form on your computer and open it with Adobe Reader.
- Enter your organization's information then select **Next**.
- If you need information about your organization's requirements, click on the appropriate link in section B: **Understand your accessibility requirements**. This will bring you to our website where you can see your past, current and future requirements.
- The questions you will see on the form are based on the accessibility requirements that apply to your **Organization category** (e.g. Business/non-profit) and **Number of employees range** (e.g. 20-49, 50+).
- Click **Yes** (if you are in compliance) or **No** (if you are not in compliance) for each question. You may add comments in the comment box below each question.
- Each report question has links to:
 - The regulation section that is related to that question.
 - Helpful resources to help you understand and comply with the requirements.
- Once you have answered all of the questions, click **Save form** at the bottom of the page before clicking **Next**.
- Review the accessibility compliance report summary.

Certify and submit your report

- Complete the information in the **Certifier Information** section
- The certifier must:
 - Review all information entered on the form for completeness and accuracy.
 - Check the three boxes to indicate their authority as a certifier in your organization.
- Enter information for a primary contact in your organization. This person may be the certifier or a different person.
- You may save the form at any time by clicking the **Save form** button.
- When you are ready to submit your report, click the **Save and submit** button. You will be prompted to save the form on your local computer first and then it will be submitted.
- Wait for a confirmation prompt that either confirms submission or indicates any problems.
- Once you have successfully submitted your certified report, an email will be sent to the Certifier and the Primary Contact with a confirmation number and an accessible PDF copy of your organization's accessibility compliance report.

If you have any questions please contact the AODA Contact Centre (ServiceOntario) at:

Toll Free Phone: 1-866-515-2025 TTY Toll free: 1-800-268-7095
Phone: 416-849-8276 TTY: 416-325-3408



Instructions

All information you provide is subject to the *Freedom of Information and Protection of Privacy Act*.

Fields marked with an asterisk (*) are mandatory.

A. Organization information

Organization category * Designated Public Sector	Number of employees range * 50+ employees	Reporting year 2017
---	--	------------------------

Business details

Organization legal name * Corporation of the Township of North Frontenac	Number of employees in Ontario * Help 90
---	---

Business number (BN9) * [Help](#)
871181970

Check if operating/business name is same as legal name

Organization operating/business name Corporation of the Township of North Frontenac	Language preference for communications * English
--	---

Sector that best describes your organization's principal business activity * [Help](#)
91 - Public administration

Subsector (if possible) 913 - Local, municipal and regional public administration	Industry group (if possible)
--	------------------------------

Mailing address

Address where letters can be sent to the person responsible for coordinating the organization's AODA compliance activities.

Country * Canada USA International

Type of address * Street address Street address served by route Other

Unit number	Street number * 6648	Street name * 506
-------------	-------------------------	----------------------

Street type Road	Street direction	City * Plevna	Province * ON (Ontario)
---------------------	------------------	------------------	----------------------------

Postal code *
K0H 2M0

Business address

(Address at which letters can be sent to the company director/officer accountable for the organization's compliance with the AODA.)

Check if business address is same as mailing address

Country * Canada USA International

Type of address * Street address Street address served by route Other

Unit number	Street number * 6648	Street name * 506
-------------	-------------------------	----------------------

Street type Road	Street direction	City * Plevna	Province * ON (Ontario)
---------------------	------------------	------------------	----------------------------

Postal code *
K0H 2M0

Use the "Add new organization" button to add additional organizations to which this accessibility report is to be applied (maximum 20).

Note: All organizations must have the same organization category, number of employees range, compliance answers and certifier, and have different business numbers, in order to file under the same form.



Organization category [Designated Public Sector](#) | Number of employees range [50+](#)
 Filing organization legal name [Corporation of the Township of North Frontenac](#)
 Filing organization business number (BN9) [871181970](#)

Fields marked with an asterisk (*) are mandatory.

B. Understand your accessibility requirements

Before you begin your report, you can learn about your accessibility requirements at ontario.ca/accessibility

Additional accessibility requirements apply if you are:

- [a municipality](#)
- [an education institution \(e.g. school board, college, university or school\)](#)
- [a producer of education material \(e.g. textbooks\)](#)
- [a library board](#)

C. Accessibility compliance report questions

Instructions

Please answer each of the following compliance questions. Use the Comments box if you wish to comment on any response.

If you need help with a specific question, click the help links which will open in a new browser window. Use the link on the left to view the relevant AODA regulations and the link on the right to view relevant accessibility information resources.

Make your employment practices accessible

1. Does your organization notify its employees and the public about the availability of accommodations during the recruitment process? * Yes No

[Read O. Reg. 191/11 s.22 - 24: Recruitment](#)

[Learn more about your requirements for question 1](#)

Comments for question 1

2. Does your organization provide employees with updated information about its policies to support employees with disabilities? * Yes No

[Read O. Reg. 191/11 s.25: Informing employees of supports](#)

[Learn more about your requirements for question 2](#)

Comments for question 2

3. When requested, does your organization provide employees with disabilities information in an accessible format or with communication supports? * Yes No

[Read O. Reg. 191/11 s.26: Accessible formats and communication supports for employees](#) [Learn more about your requirements for question 3](#)

Comments for question 3

4. Does your organization prepare individualized workplace emergency response information for employees with disabilities? * Yes No

[Read O. Reg. 191/11 s.27: Workplace emergency response information](#) [Learn more about your requirements for question 4](#)

Comments for question 4

Make new or redeveloped public spaces accessible

5. Since January 1, 2016, has your organization constructed new or redeveloped existing recreational trails that you intend to maintain? * Yes No
(if Yes, you will be required to answer additional questions)

[Read O. Reg. 191/11 Part IV.1: Design of Public Spaces Standards - Definitions](#) [Learn more about your requirements for question 5](#)

5.a. Did your organization consult with the public and persons with disabilities prior to constructing new or redeveloping existing recreational trails as outlined in the s.80(8) of the Integrated Accessibility Standards Regulation (IASR)? * Yes No

[Read O. Reg. 191/11 s.80\(8\): Consultation, recreational trails](#) [Learn more about your requirements for question 5.a](#)

Comments for question 5.a

5.b. Does your organization ensure that its new or redeveloped recreational trails meet the technical requirements as outlined s.80(9) of the IASR? * Yes No

[Read O. Reg. 191/11 s.80\(9\): Technical requirements for trails](#) [Learn more about your requirements for question 5.b](#)

Comments for question 5.b

6. Since January 1, 2016, has your organization constructed new or redeveloped existing beach access routes that you intend to maintain? * Yes No
(if Yes, you will be required to answer additional questions)

[Read O. Reg. 191/11 Part IV.1: Design of Public Spaces Standards - Definitions](#) [Learn more about your requirements for question 6](#)

6.a. Does your organization ensure that its new or redeveloped beach access routes meet the technical requirements as outlined in IASR s.80(10)? * Yes No

[Read O. Reg. 191/11 s.80\(10\): Technical requirements for beach access routes](#) [Learn more about your requirements for question 6.a](#)

Comments for question 6.a

7. Do your new or redeveloped recreational trail and/or beach access routes include boardwalks? * Yes No
(if Yes, you will be required to answer additional questions)

7.a. Where new or redeveloped recreational trails and/or beach access routes have a boardwalk, does the boardwalk meet the technical requirements as outlined in s.80(12) of the IASR? * Yes No

[Read O. Reg. 191/11 s.80\(12\): Boardwalks](#) [Learn more about your requirements for question 7.a](#)

Comments for question 7.a

8. Do your new or redeveloped recreational trails and/or beach access routes include ramps? * Yes No
(if Yes, you will be required to answer additional questions)

[Read O. Reg. 191/11 s.80\(13\): Ramps](#)

[Learn more about your requirements for question 8](#)

8.a. Where new or redeveloped recreational trails and/or beach access routes have a ramp, does the ramp meet the technical requirements as outlined in s.80(13) of the IASR? * Yes No

[Read O. Reg. 191/11 s.80\(13\): Ramps](#)

[Learn more about your requirements for question 8.a](#)

Comments for question 8.a

9. Since January 1, 2016, has your organization constructed new or redeveloped existing outdoor public use eating areas that you intend to maintain? * Yes No
(if Yes, you will be required to answer additional questions)

[Read O. Reg. 191/11 s.80\(17\): Outdoor public use eating areas, general requirements](#)

[Learn more about your requirements for question 9](#)

9.a. Does your organization ensure that where they construct or redevelop outdoor public use eating areas that they meet the requirements as outlined in s.80(17) of the IASR? * Yes No

[Read O. Reg. 191/11 s.80\(17\): Outdoor public use eating areas, general requirements](#) [Learn more about your requirements for question 9.a](#)

Comments for question 9.a

10. Since January 1, 2016, has your organization constructed new or redeveloped existing outdoor play spaces that you intend to maintain? * Yes No
(if Yes, you will be required to answer additional questions)

10.a. When constructing new or redeveloping existing outdoor play spaces, did your organization consult with the public and persons with disabilities on the needs of children and caregivers, and if you represent a municipality did your organization consult with the accessibility advisory committee where one was established as outlined in s.80(19) of the IASR? * Yes No

[Read O. Reg. 191/11 s.80\(19\): Outdoor play spaces, consultation requirements](#)

[Learn more about your requirements for question 10.a](#)

Comments for question 10.a

10.b. Did your organization incorporate accessibility features when constructing a new or redeveloping an existing play space as outlined in s.80(20a) of the IASR? * Yes No

[Read O. Reg. 191/11 s.80\(20a\): Outdoor play spaces, accessibility in design](#)

[Learn more about your requirements for question 10.b](#)

Comments for question 10.b

10.c. Does your organization's new or redeveloped play spaces have a firm ground surface as outlined in s.80(20b) of the IASR? * Yes No

[Read O. Reg. 191/11 s.80\(20b\): Outdoor play spaces, accessibility in design](#)

[Learn more about your requirements for question 10.c](#)

Comments for question 10.c

11. Since January 1, 2016, has your organization constructed new or redeveloped existing exterior paths of travel that you intend to maintain? * Yes No
(if Yes, you will be required to answer additional questions)

11.a. Where applicable, do your newly constructed or redeveloped exterior paths of travel meet the technical and general requirements as outlined in s.80(21) – 80(31) of the IASR? * Yes No

[Read O. Reg. 191/11 s. 80\(21\) - 80\(31\): Exterior Paths of Travel](#)

[Learn more about your requirements for question 11.a](#)

Comments for question 11.a

12. Since January 1, 2016, has your organization constructed new or redeveloped existing off-street parking facilities that you intend to maintain? * Yes No
(if Yes, you will be required to answer additional questions)

12.a. When constructing new or redeveloping off-street parking facilities that you intend to maintain, do you ensure that the off-street parking facilities meet the accessibility requirements as outlined in s.80(32) – 80(37) of the IASR? * Yes No

[Read O. Reg. 191/11 s.80\(32\) - 80\(37\): Accessible Parking](#)

[Learn more about your requirements for question 12.a](#)

Comments for question 12.a

13. Since January 1, 2016, has your organization constructed a new or replaced an existing service counter? * Yes No
(if Yes, you will be required to answer additional questions)

13.a. Does your organization ensure that new or redeveloped service counters meet the technical requirements as outlined in s.80(41) of the IASR? * Yes No

[Read O. Reg. 191/11 s. 80\(41\): Service counters](#)

[Learn more about your requirements for question 13.a](#)

Comments for question 13.a

14. Since January 1, 2016, has your organization constructed new fixed queuing guides? * Yes No
(if Yes, you will be required to answer additional questions)

14.a. Does your organization ensure that new fixed queuing guides for obtaining services meet the technical requirements as outlined in s.80(42) of the IASR? * Yes No

[Read O. Reg. 191/11 s.80\(42\): Fixed queuing guides](#)

[Learn more about your requirements for question 14.a](#)

Comments for question 14.a

15. Since January 1, 2016, has your organization constructed new or redeveloped existing waiting areas? * Yes No
(if Yes, you will be required to answer additional questions)

15.a. Does your organization ensure that new or developed fixed seating waiting areas meet the technical requirements as outlined in s.80(43) of the IASR? * Yes No

[Read O. Reg. 191/11 s.80\(43\): Waiting areas](#)

[Learn more about your requirements for question 15.a](#)

Comments for question 15.a

16. Does your organization's public spaces have accessible elements in place as required under the Design of Public Spaces Standard of the IASR? * Yes No
(if Yes, you will be required to answer additional questions)

[Read O. Reg. 191/11 Part IV. 1: Design of public spaces standards](#)

[Learn more about your requirements for question 16](#)

16.a. Does your organization's multi-year accessibility plan include procedures for preventative and emergency maintenance of the accessible elements in public spaces, and for dealing with temporary disruptions when accessible elements are not in working order as outlined in s.80(44) of the IASR? * Yes No

[Read O. Reg. 191/11 s.80\(44\): Maintenance of accessible elements](#)

[Learn more about your requirements for question 16.a](#)

Comments for question 16.a

Provide accessible transportation services

17. Does your organization provide conventional transportation services? * Yes No
(if Yes, you will be required to answer additional questions)

[Read O. Reg. 191/11 Part IV - Transportation Standards: Definitions](#)

[Learn more about your requirements for question 17](#)

17.a. Does your organization have electronic pre-boarding announcements of the route, direction, destination or next major stop on its transportation vehicles, and do these announcements satisfy the requirements set out in section 51. O. Reg. 191/11? * Yes No

[Read O. Reg. 191/11 s.51\(2\): Pre-boarding announcements](#)

[Learn more about your requirements for question 17.a](#)

Comments for question 17.a

17.b. Does your organization ensure that all destination points or available route stops are announced through electronic means and legibly and visually displayed through electronic means? * Yes No

[Read O. Reg. 191/11 s.52\(2\) - 52\(3\): On-board announcements](#)

[Learn more about your requirements for question 17.b](#)

Comments for question 17.b

18. Does your organization provide specialized transportation services? * Yes No
(if Yes, you will be required to answer additional questions)

[Read O. Reg. 191/11 Part IV - Transportation Standards: Definitions](#)

[Learn more about your requirements for question 18](#)

18.a. Does your organization follow the eligibility requirements as outlined in section 63 of the Integrated Accessibility Standards Regulation? * Yes No

[Read O. Reg. 191/11 s.63: Categories of eligibility](#)

[Learn more about your requirements for question 18.a](#)

Comments for question 18.a

19. In the jurisdiction where you provide specialized transportation services, does another organization provide conventional transportation services? * Yes No
(if Yes, you will be required to answer additional questions)

19.a. Does your organization ensure that it does not charge more than the highest fare charged for conventional transportation services within the same jurisdiction? * Yes No

[Read O. Reg. 191/11 s.66: Fare parity](#)

[Learn more about your requirements for question 19.a](#)

Comments for question 19.a

19.b. Does your organization ensure that it has, at minimum, the same hours and days of service as any one of the conventional transportation service providers within the same jurisdiction? * Yes No

[Read O. Reg. 191/11 s.70: Hours of service](#)

[Learn more about your requirements for question 19.b](#)

Comments for question 19.b

20. Other than the requirements cited in the above questions, is your organization complying with all other requirements in effect under the Integrated Accessibility Standards Regulation? * Yes No

[Read O. Reg. 191/11: Integrated Accessibility Standards](#)

[Learn more about your requirements for question 20](#)

Comments for question 20



Organization category Designated Public Sector	Number of employees range 50+
Filing organization legal name Corporation of the Township of North Frontenac	
Filing organization business number (BN9) 871181970	

Fields marked with an asterisk (*) are mandatory.

D. Accessibility compliance report summary

Your responses to the questions on your accessibility report indicate that your organization is in compliance with AODA standards.

Your organization may be audited to verify compliance.

E. Accessibility compliance report certification

Section 15 of the *Accessibility for Ontarians with Disabilities Act, 2005* requires that accessibility reports include a statement certifying that all the required information has been provided and is accurate, signed by a person with authority to bind the organization(s).

Note: It is an offence under the Act to provide false or misleading information in an accessibility report filed under the AODA.

The certifier may designate a primary contact for the Accessibility Directorate to contact the organization(s); otherwise the certifier will be the main contact.

Certifier: Someone who can legally bind the organization(s).

Primary Contact: The person who will be the main contact for accessibility issues.

Acknowledgement

- I certify that I have the authority to bind all organizations specified in Section A of this form, *
- I certify that all the required information has been included in this report, and, *
- I certify that the information in this report is accurate. *

Certification date (yyyy-mm-dd) * **2017-11-20**

Certifier information

Last name * Korhonen		First name * Eric	
Position title * Other	Business phone number * 613 479-2231	Extension 232	<input type="checkbox"/> Check here if TTY
Email * firechief@northfrontenac.ca		Alternate phone number	Extension 613 479-2352

Primary contact for the organization(s)

- Check if the primary contact is same as the certifier

Last name * Korhonen		First name * Eric	
Position title * Other	Business phone number * 613 479-2231	Extension 232	<input type="checkbox"/> Check here if TTY
Email * firechief@northfrontenac.ca		Alternate phone number	Extension 613 479-2352



How to complete your accessibility compliance report

You must complete the mandatory fields on each page before you can move to the next page. Mandatory fields are marked with an asterisk (*).

To start, save the form on your local computer and be sure to open it with Adobe Reader. You can save the form at any point in the process and return to it later. You may distribute the form within your organization for input before submitting.

You need the following to file your accessibility compliance report:

- Nine-digit **Business number (BN9)**, that identifies your organization with the Canada Revenue Agency (found on federal and provincial tax returns). In the rare case that an organization doesn't have a Business number (BN9), an AODA identifier (assigned by the Accessibility Directorate of Ontario) would be used in its place.
- Your **Organization category**
 - if you are a Business or a Non-profit, your Organization category is Business/Non-profit
 - if you are a municipality, or a hospital, college, university, school board, public transportation provider (under [Schedule 1 of the regulation 191/11](#)), or an agency, board or commission (under [Column 1 of Table 1 of Ontario Regulation 146/10](#)), your Organization category is Designated Public Sector
 - **Note:** If you select the wrong organization category, you may see questions that do not apply to you. You will need to correct the category and enter your data again to successfully submit your report.
- Number of employees in your organization
- A person with authority to bind your organization (e.g. a director or senior officer) must certify your organization's accessibility compliance report as complete and accurate.

You are able to file on behalf of up to 20 organizations using one form. To do so you will need each organization's business number (BN9) or AODA identifier, number of employees and address. All organizations filing under the same form must have the same **Organization category** (e.g. Business/Non-profit), **Number of employees range** (e.g. 20-49, 50+), **certifier**, and all answers to the accessibility compliance questions must be the same. If not, you will need to complete a separate form for each organization.

If you require the accessibility compliance report in an alternate format, please contact accessibility@ontario.ca

Note: Users of assistive technology should pull up a list of buttons to get a list of the links on the form.

Begin your report

Follow these steps to complete your form:

- Download and open the form
- Save the form on your computer and open it with Adobe Reader.
- Enter your organization's information then select **Next**.
- If you need information about your organization's requirements, click on the appropriate link in section B: **Understand your accessibility requirements**. This will bring you to our website where you can see your past, current and future requirements.
- The questions you will see on the form are based on the accessibility requirements that apply to your **Organization category** (e.g. Business/non-profit) and **Number of employees range** (e.g. 20-49, 50+).
- Click **Yes** (if you are in compliance) or **No** (if you are not in compliance) for each question. You may add comments in the comment box below each question.
- Each report question has links to:
 - The regulation section that is related to that question.
 - Helpful resources to help you understand and comply with the requirements.
- Once you have answered all of the questions, click **Save form** at the bottom of the page before clicking **Next**.
- Review the accessibility compliance report summary.

Certify and submit your report

- Complete the information in the **Certifier Information** section
- The certifier must:
 - Review all information entered on the form for completeness and accuracy.
 - Check the three boxes to indicate their authority as a certifier in your organization.
- Enter information for a primary contact in your organization. This person may be the certifier or a different person.
- You may save the form at any time by clicking the **Save form** button.
- When you are ready to submit your report, click the **Save and submit** button. You will be prompted to save the form on your local computer first and then it will be submitted.
- Wait for a confirmation prompt that either confirms submission or indicates any problems.
- Once you have successfully submitted your certified report, an email will be sent to the Certifier and the Primary Contact with a confirmation number and an accessible PDF copy of your organization's accessibility compliance report.

If you have any questions please contact the AODA Contact Centre (ServiceOntario) at:

Toll Free Phone: 1-866-515-2025	TTY Toll free: 1-800-268-7095
Phone: 416-849-8276	TTY: 416-325-3408



Instructions

All information you provide is subject to the *Freedom of Information and Protection of Privacy Act*.

Fields marked with an asterisk (*) are mandatory.

A. Organization information

Organization category *	Number of employees range *	Reporting year
Designated Public Sector	50+ employees	2017

Business details

Organization legal name *	Number of employees in Ontario *	Help
Corporation of the Township of South Frontenac	52	

Business number (BN9) * [Help](#)
871323895

Check if operating/business name is same as legal name

Organization operating/business name	Language preference for communications *
Township of South Frontenac	English

Sector that best describes your organization's principal business activity * [Help](#)
91 - Public administration

Subsector (if possible)	Industry group (if possible)
913 - Local, municipal and regional public administration	9139 - Other local, municipal and regional public administr

Mailing address

Address where letters can be sent to the person responsible for coordinating the organization's AODA compliance activities.

Country * Canada USA International

Type of address * Street address Street address served by route Other

Unit number	Street number *	Street name *
	4432	George

Street type	Street direction	City *	Province *
Street		Box 100 Sydenham	ON (Ontario)

Postal code *
K0H 2T0

Business address

(Address at which letters can be sent to the company director/officer accountable for the organization's compliance with the AODA.)

Check if business address is same as mailing address

Country * Canada USA International

Type of address * Street address Street address served by route Other

Unit number	Street number *	Street name *
	4432	George

Street type	Street direction	City *	Province *
Street		Sydenham	ON (Ontario)

Postal code *
K0H 2T0

Use the "Add new organization" button to add additional organizations to which this accessibility report is to be applied (maximum 20).

Note: All organizations must have the same organization category, number of employees range, compliance answers and certifier, and have different business numbers, in order to file under the same form.



Organization category [Designated Public Sector](#) | Number of employees range [50+](#)
 Filing organization legal name [Corporation of the Township of South Frontenac](#)
 Filing organization business number (BN9) [871323895](#)

Fields marked with an asterisk (*) are mandatory.

B. Understand your accessibility requirements

Before you begin your report, you can learn about your accessibility requirements at ontario.ca/accessibility

Additional accessibility requirements apply if you are:

- [a municipality](#)
- [an education institution \(e.g. school board, college, university or school\)](#)
- [a producer of education material \(e.g. textbooks\)](#)
- [a library board](#)

C. Accessibility compliance report questions

Instructions

Please answer each of the following compliance questions. Use the Comments box if you wish to comment on any response.

If you need help with a specific question, click the help links which will open in a new browser window. Use the link on the left to view the relevant AODA regulations and the link on the right to view relevant accessibility information resources.

Make your employment practices accessible

1. Does your organization notify its employees and the public about the availability of accommodations during the recruitment process? * Yes No

[Read O. Reg. 191/11 s.22 - 24: Recruitment](#)

[Learn more about your requirements for question 1](#)

Comments for question 1

2. Does your organization provide employees with updated information about its policies to support employees with disabilities? * Yes No

[Read O. Reg. 191/11 s.25: Informing employees of supports](#)

[Learn more about your requirements for question 2](#)

Comments for question 2

3. When requested, does your organization provide employees with disabilities information in an accessible format or with communication supports? * Yes No

[Read O. Reg. 191/11 s.26: Accessible formats and communication supports for employees](#) [Learn more about your requirements for question 3](#)

Comments for question 3

4. Does your organization prepare individualized workplace emergency response information for employees with disabilities? * Yes No

[Read O. Reg. 191/11 s.27: Workplace emergency response information](#) [Learn more about your requirements for question 4](#)

Comments for question 4

Make new or redeveloped public spaces accessible

5. Since January 1, 2016, has your organization constructed new or redeveloped existing recreational trails that you intend to maintain? * Yes No
(if Yes, you will be required to answer additional questions)

[Read O. Reg. 191/11 Part IV.1: Design of Public Spaces Standards - Definitions](#) [Learn more about your requirements for question 5](#)

5.a. Did your organization consult with the public and persons with disabilities prior to constructing new or redeveloping existing recreational trails as outlined in the s.80(8) of the Integrated Accessibility Standards Regulation (IASR)? * Yes No

[Read O. Reg. 191/11 s.80\(8\): Consultation, recreational trails](#) [Learn more about your requirements for question 5.a](#)

Comments for question 5.a

5.b. Does your organization ensure that its new or redeveloped recreational trails meet the technical requirements as outlined s.80(9) of the IASR? * Yes No

[Read O. Reg. 191/11 s.80\(9\): Technical requirements for trails](#) [Learn more about your requirements for question 5.b](#)

Comments for question 5.b

6. Since January 1, 2016, has your organization constructed new or redeveloped existing beach access routes that you intend to maintain? * Yes No
(if Yes, you will be required to answer additional questions)

[Read O. Reg. 191/11 Part IV.1: Design of Public Spaces Standards - Definitions](#) [Learn more about your requirements for question 6](#)

6.a. Does your organization ensure that its new or redeveloped beach access routes meet the technical requirements as outlined in IASR s.80(10)? * Yes No

[Read O. Reg. 191/11 s.80\(10\): Technical requirements for beach access routes](#) [Learn more about your requirements for question 6.a](#)

Comments for question 6.a

7. Do your new or redeveloped recreational trail and/or beach access routes include boardwalks? * Yes No
(if Yes, you will be required to answer additional questions)

7.a. Where new or redeveloped recreational trails and/or beach access routes have a boardwalk, does the boardwalk meet the technical requirements as outlined in s.80(12) of the IASR? * Yes No

[Read O. Reg. 191/11 s.80\(12\): Boardwalks](#) [Learn more about your requirements for question 7.a](#)

Comments for question 7.a

8. Do your new or redeveloped recreational trails and/or beach access routes include ramps? * Yes No
(if Yes, you will be required to answer additional questions)

[Read O. Reg. 191/11 s.80\(13\): Ramps](#)

[Learn more about your requirements for question 8](#)

8.a. Where new or redeveloped recreational trails and/or beach access routes have a ramp, does the ramp meet the technical requirements as outlined in s.80(13) of the IASR? * Yes No

[Read O. Reg. 191/11 s.80\(13\): Ramps](#)

[Learn more about your requirements for question 8.a](#)

Comments for question 8.a

9. Since January 1, 2016, has your organization constructed new or redeveloped existing outdoor public use eating areas that you intend to maintain? * Yes No
(if Yes, you will be required to answer additional questions)

[Read O. Reg. 191/11 s.80\(17\): Outdoor public use eating areas, general requirements](#)

[Learn more about your requirements for question 9](#)

9.a. Does your organization ensure that where they construct or redevelop outdoor public use eating areas that they meet the requirements as outlined in s.80(17) of the IASR? * Yes No

[Read O. Reg. 191/11 s.80\(17\): Outdoor public use eating areas, general requirements](#) [Learn more about your requirements for question 9.a](#)

Comments for question 9.a

10. Since January 1, 2016, has your organization constructed new or redeveloped existing outdoor play spaces that you intend to maintain? * Yes No
(if Yes, you will be required to answer additional questions)

10.a. When constructing new or redeveloping existing outdoor play spaces, did your organization consult with the public and persons with disabilities on the needs of children and caregivers, and if you represent a municipality did your organization consult with the accessibility advisory committee where one was established as outlined in s.80(19) of the IASR? * Yes No

[Read O. Reg. 191/11 s.80\(19\): Outdoor play spaces, consultation requirements](#)

[Learn more about your requirements for question 10.a](#)

Comments for question 10.a

10.b. Did your organization incorporate accessibility features when constructing a new or redeveloping an existing play space as outlined in s.80(20a) of the IASR? * Yes No

[Read O. Reg. 191/11 s.80\(20a\): Outdoor play spaces, accessibility in design](#)

[Learn more about your requirements for question 10.b](#)

Comments for question 10.b

10.c. Does your organization's new or redeveloped play spaces have a firm ground surface as outlined in s.80(20b) of the IASR? * Yes No

[Read O. Reg. 191/11 s.80\(20b\): Outdoor play spaces, accessibility in design](#)

[Learn more about your requirements for question 10.c](#)

Comments for question 10.c

11. Since January 1, 2016, has your organization constructed new or redeveloped existing exterior paths of travel that you intend to maintain? * Yes No
(if Yes, you will be required to answer additional questions)

11.a. Where applicable, do your newly constructed or redeveloped exterior paths of travel meet the technical and general requirements as outlined in s.80(21) – 80(31) of the IASR? * Yes No

[Read O. Reg. 191/11 s. 80\(21\) - 80\(31\): Exterior Paths of Travel](#)

[Learn more about your requirements for question 11.a](#)

Comments for question 11.a

12. Since January 1, 2016, has your organization constructed new or redeveloped existing off-street parking facilities that you intend to maintain? * Yes No
(if Yes, you will be required to answer additional questions)

12.a. When constructing new or redeveloping off-street parking facilities that you intend to maintain, do you ensure that the off-street parking facilities meet the accessibility requirements as outlined in s.80(32) – 80(37) of the IASR? * Yes No

[Read O. Reg. 191/11 s.80\(32\) - 80\(37\): Accessible Parking](#)

[Learn more about your requirements for question 12.a](#)

Comments for question 12.a

13. Since January 1, 2016, has your organization constructed a new or replaced an existing service counter? * Yes No
(if Yes, you will be required to answer additional questions)

13.a. Does your organization ensure that new or redeveloped service counters meet the technical requirements as outlined in s.80(41) of the IASR? * Yes No

[Read O. Reg. 191/11 s. 80\(41\): Service counters](#)

[Learn more about your requirements for question 13.a](#)

Comments for question 13.a

14. Since January 1, 2016, has your organization constructed new fixed queuing guides? * Yes No
(if Yes, you will be required to answer additional questions)

14.a. Does your organization ensure that new fixed queuing guides for obtaining services meet the technical requirements as outlined in s.80(42) of the IASR? * Yes No

[Read O. Reg. 191/11 s.80\(42\): Fixed queuing guides](#)

[Learn more about your requirements for question 14.a](#)

Comments for question 14.a

15. Since January 1, 2016, has your organization constructed new or redeveloped existing waiting areas? * Yes No
(if Yes, you will be required to answer additional questions)

15.a. Does your organization ensure that new or developed fixed seating waiting areas meet the technical requirements as outlined in s.80(43) of the IASR? * Yes No

[Read O. Reg. 191/11 s.80\(43\): Waiting areas](#)

[Learn more about your requirements for question 15.a](#)

Comments for question 15.a

16. Does your organization's public spaces have accessible elements in place as required under the Design of Public Spaces Standard of the IASR? * Yes No
(if Yes, you will be required to answer additional questions)

[Read O. Reg. 191/11 Part IV. 1: Design of public spaces standards](#)

[Learn more about your requirements for question 16](#)

16.a. Does your organization's multi-year accessibility plan include procedures for preventative and emergency maintenance of the accessible elements in public spaces, and for dealing with temporary disruptions when accessible elements are not in working order as outlined in s.80(44) of the IASR? * Yes No

[Read O. Reg. 191/11 s.80\(44\): Maintenance of accessible elements](#)

[Learn more about your requirements for question 16.a](#)

Comments for question 16.a

Provide accessible transportation services

17. Does your organization provide conventional transportation services? * Yes No
(if Yes, you will be required to answer additional questions)

[Read O. Reg. 191/11 Part IV - Transportation Standards: Definitions](#)

[Learn more about your requirements for question 17](#)

17.a. Does your organization have electronic pre-boarding announcements of the route, direction, destination or next major stop on its transportation vehicles, and do these announcements satisfy the requirements set out in section 51. O. Reg. 191/11? * Yes No

[Read O. Reg. 191/11 s.51\(2\): Pre-boarding announcements](#)

[Learn more about your requirements for question 17.a](#)

Comments for question 17.a

17.b. Does your organization ensure that all destination points or available route stops are announced through electronic means and legibly and visually displayed through electronic means? * Yes No

[Read O. Reg. 191/11 s.52\(2\) - 52\(3\): On-board announcements](#)

[Learn more about your requirements for question 17.b](#)

Comments for question 17.b

18. Does your organization provide specialized transportation services? * Yes No
(if Yes, you will be required to answer additional questions)

[Read O. Reg. 191/11 Part IV - Transportation Standards: Definitions](#)

[Learn more about your requirements for question 18](#)

18.a. Does your organization follow the eligibility requirements as outlined in section 63 of the Integrated Accessibility Standards Regulation? * Yes No

[Read O. Reg. 191/11 s.63: Categories of eligibility](#)

[Learn more about your requirements for question 18.a](#)

Comments for question 18.a

19. In the jurisdiction where you provide specialized transportation services, does another organization provide conventional transportation services? * Yes No
(if Yes, you will be required to answer additional questions)

19.a. Does your organization ensure that it does not charge more than the highest fare charged for conventional transportation services within the same jurisdiction? * Yes No

[Read O. Reg. 191/11 s.66: Fare parity](#)

[Learn more about your requirements for question 19.a](#)

Comments for question 19.a

19.b. Does your organization ensure that it has, at minimum, the same hours and days of service as any one of the conventional transportation service providers within the same jurisdiction? * Yes No

[Read O. Reg. 191/11 s.70: Hours of service](#)

[Learn more about your requirements for question 19.b](#)

Comments for question 19.b

20. Other than the requirements cited in the above questions, is your organization complying with all other requirements in effect under the Integrated Accessibility Standards Regulation? * Yes No

[Read O. Reg. 191/11: Integrated Accessibility Standards](#)

[Learn more about your requirements for question 20](#)

Comments for question 20



Organization category Designated Public Sector	Number of employees range 50+
Filing organization legal name Corporation of the Township of South Frontenac	
Filing organization business number (BN9) 871323895	

Fields marked with an asterisk (*) are mandatory.

D. Accessibility compliance report summary

Your responses to the questions on your accessibility report indicate that your organization is in compliance with AODA standards.

Your organization may be audited to verify compliance.

E. Accessibility compliance report certification

Section 15 of the *Accessibility for Ontarians with Disabilities Act, 2005* requires that accessibility reports include a statement certifying that all the required information has been provided and is accurate, signed by a person with authority to bind the organization(s).

Note: It is an offence under the Act to provide false or misleading information in an accessibility report filed under the AODA.

The certifier may designate a primary contact for the Accessibility Directorate to contact the organization(s); otherwise the certifier will be the main contact.

Certifier: Someone who can legally bind the organization(s).

Primary Contact: The person who will be the main contact for accessibility issues.

Acknowledgement

- I certify that I have the authority to bind all organizations specified in Section A of this form, *
- I certify that all the required information has been included in this report, and, *
- I certify that the information in this report is accurate. *

Certification date (yyyy-mm-dd) * **2017-11-21**

Certifier information

Last name * Orr		First name * Wayne	
Position title * Other	Business phone number * 613 376-3027	Extension 2225	<input type="checkbox"/> Check here if TTY
Email * worr@southfrontenac.net		Alternate phone number	Fax number 613 376-6657

Primary contact for the organization(s)

Check if the primary contact is same as the certifier

Last name * Corneil		First name * Sherry	
Position title * Other	Business phone number * 613 376-3027	Extension 2244	<input type="checkbox"/> Check here if TTY
Email * scoreil@southfrontenac.net		Alternate phone number	Fax number 613 376-6657

**How to complete your accessibility compliance report**

You must complete the mandatory fields on each page before you can move to the next page. Mandatory fields are marked with an asterisk (*).

To start, save the form on your local computer and be sure to open it with Adobe Reader. You can save the form at any point in the process and return to it later. You may distribute the form within your organization for input before submitting.

You need the following to file your accessibility compliance report:

- Nine-digit **Business number (BN9)**, that identifies your organization with the Canada Revenue Agency (found on federal and provincial tax returns). In the rare case that an organization doesn't have a Business number (BN9), an AODA identifier (assigned by the Accessibility Directorate of Ontario) would be used in its place.
- Your **Organization category**
 - if you are a Business or a Non-profit, your Organization category is Business/Non-profit
 - if you are a municipality, or a hospital, college, university, school board, public transportation provider (under [Schedule 1 of the regulation 191/11](#)), or an agency, board or commission (under [Column 1 of Table 1 of Ontario Regulation 146/10](#)), your Organization category is Designated Public Sector
 - **Note:** If you select the wrong organization category, you may see questions that do not apply to you. You will need to correct the category and enter your data again to successfully submit your report.
- Number of employees in your organization
- A person with authority to bind your organization (e.g. a director or senior officer) must certify your organization's accessibility compliance report as complete and accurate.

You are able to file on behalf of up to 20 organizations using one form. To do so you will need each organization's business number (BN9) or AODA identifier, number of employees and address. All organizations filing under the same form must have the same **Organization category** (e.g. Business/Non-profit), **Number of employees range** (e.g. 20-49, 50+), **certifier**, and all answers to the accessibility compliance questions must be the same. If not, you will need to complete a separate form for each organization.

If you require the accessibility compliance report in an alternate format, please contact accessibility@ontario.ca

Note: Users of assistive technology should pull up a list of buttons to get a list of the links on the form.

Begin your report**Follow these steps to complete your form:**

- Download and open the form
- Save the form on your computer and open it with Adobe Reader.
- Enter your organization's information then select **Next**.
- If you need information about your organization's requirements, click on the appropriate link in section B: **Understand your accessibility requirements**. This will bring you to our website where you can see your past, current and future requirements.
- The questions you will see on the form are based on the accessibility requirements that apply to your **Organization category** (e.g. Business/non-profit) and **Number of employees range** (e.g. 20-49, 50+).
- Click **Yes** (if you are in compliance) or **No** (if you are not in compliance) for each question. You may add comments in the comment box below each question.
- Each report question has links to:
 - The regulation section that is related to that question.
 - Helpful resources to help you understand and comply with the requirements.
- Once you have answered all of the questions, click **Save form** at the bottom of the page before clicking **Next**.
- Review the accessibility compliance report summary.

Certify and submit your report

- Complete the information in the **Certifier Information** section
- The certifier must:
 - Review all information entered on the form for completeness and accuracy.
 - Check the three boxes to indicate their authority as a certifier in your organization.
- Enter information for a primary contact in your organization. This person may be the certifier or a different person.
- You may save the form at any time by clicking the **Save form** button.
- When you are ready to submit your report, click the **Save and submit** button. You will be prompted to save the form on your local computer first and then it will be submitted.
- Wait for a confirmation prompt that either confirms submission or indicates any problems.
- Once you have successfully submitted your certified report, an email will be sent to the Certifier and the Primary Contact with a confirmation number and an accessible PDF copy of your organization's accessibility compliance report.

If you have any questions please contact the AODA Contact Centre (ServiceOntario) at:

Toll Free Phone: 1-866-515-2025 TTY Toll free: 1-800-268-7095
Phone: 416-849-8276 TTY: 416-325-3408



Instructions

All information you provide is subject to the *Freedom of Information and Protection of Privacy Act*.

Fields marked with an asterisk (*) are mandatory.

A. Organization information

Organization category *	Number of employees range *	Reporting year
Ontario Public Service / Ontario Legislative Assembly	1-49 employees	2017

Business details

Organization legal name *	Number of employees in Ontario * Help
Corporation of The Township of Central Frontenac	35

Business number (BN9) * Help	<input type="checkbox"/> Check this box if you have received an AODA identifier from the Accessibility Directorate of Ontario
869724898	

<input checked="" type="checkbox"/> Check if operating/business name is same as legal name	Language preference for communications *
Organization operating/business name	English
Corporation of The Township of Central Frontenac	

Sector that best describes your organization's principal business activity *	Help
91 - Public administration	

Subsector (if possible)	Industry group (if possible)
913 - Local, municipal and regional public administration	

Mailing address

Address where letters can be sent to the person responsible for coordinating the organization's AODA compliance activities.

Country *	<input checked="" type="radio"/> Canada	<input type="radio"/> USA	<input type="radio"/> International
-----------	---	---------------------------	-------------------------------------

Type of address *	<input checked="" type="radio"/> Street address	<input type="radio"/> Street address served by route	<input type="radio"/> Other
-------------------	---	--	-----------------------------

Unit number	Street number *	Street name *
	1084	Elizabeth Street

Street type	Street direction	City *	Province *
		Sharbot Lake	ON (Ontario)

Postal code *
K0H 2P0

Business address

(Address at which letters can be sent to the company director/officer accountable for the organization's compliance with the AODA.)

<input checked="" type="checkbox"/> Check if business address is same as mailing address
--

Country *	<input checked="" type="radio"/> Canada	<input type="radio"/> USA	<input type="radio"/> International
-----------	---	---------------------------	-------------------------------------

Type of address *	<input checked="" type="radio"/> Street address	<input type="radio"/> Street address served by route	<input type="radio"/> Other
-------------------	---	--	-----------------------------

Unit number	Street number *	Street name *
	1084	Elizabeth Street

Street type	Street direction	City *	Province *
		Sharbot Lake	ON (Ontario)

Postal code *
K0H 2P0

Use the "Add new organization" button to add additional organizations to which this accessibility report is to be applied (maximum 20).

Note: All organizations must have the same organization category, number of employees range, compliance answers and certifier, and have different business numbers, in order to file under the same form.



Organization category [Ontario Public Service / Ontario Legislative Assembly](#) | Number of employees range [1-49](#)
 Filing organization legal name [Corporation of The Township of Central Frontenac](#)
 Filing organization business number (BN9) [869724898](#)

Fields marked with an asterisk (*) are mandatory.

B. Understand your accessibility requirements

For enquiries related to the AODA obligations of the Ontario Public Service (OPS) or offices appointed under the Ontario Legislative Assembly (OLA), please contact AODA Contact Centre (ServiceOntario) at:

Phone: 416-849-8276 or **Toll-free:** 1-866-515-2025
TTY: 416-325-3408 or **Toll-free:** 1-800-268-7095
Email: aoda.assistance@ontario.ca

C. Accessibility compliance report questions

Instructions

Please answer each of the following compliance questions. Use the Comments box if you wish to comment on any response.

If you need help with a specific question, click the help links which will open in a new browser window. Use the link on the left to view the relevant AODA regulations and the link on the right to view relevant accessibility information resources.

1. Is your organization complying with the requirements of the Customer Service Standard? * Yes No

[Customer Service Standards](#)

[Learn more about your requirements for question 1](#)

Comments for question 1

2. Is your organization complying with the requirements in effect under the Information and Communications Standard? * Yes No

[Information and Communications Standards](#)

[Learn more about your requirements for question 2](#)

Comments for question 2

3. Is your organization complying with the requirements in effect under the Employment Standard? * Yes No

[Employment Standards](#)

[Learn more about your requirements for question 3](#)

Comments for question 3

4. Is your organization complying with the requirements in effect under the Design of Public Spaces Standard? * Yes No

[Design of Public Spaces Standards](#)

[Learn more about your requirements for question 4](#)

Comments for question 4



Organization category [Ontario Public Service / Ontario Legislative Assembly](#) | Number of employees range [1-49](#)

Filing organization legal name [Corporation of The Township of Central Frontenac](#)

Filing organization business number (BN9) [869724898](#)

Fields marked with an asterisk (*) are mandatory.

D. Accessibility compliance report summary

Your responses to the questions on your accessibility report indicate that your organization is in compliance with AODA standards.
Your organization may be audited to verify compliance.

E. Accessibility compliance report certification

Section 15 of the *Accessibility for Ontarians with Disabilities Act, 2005* requires that accessibility reports include a statement certifying that all the required information has been provided and is accurate, signed by a person with authority to bind the organization(s).

Note: It is an offence under the Act to provide false or misleading information in an accessibility report filed under the AODA.

The certifier may designate a primary contact for the Accessibility Directorate to contact the organization(s); otherwise the certifier will be the main contact.

Certifier: Someone who can legally bind the organization(s).

Primary Contact: The person who will be the main contact for accessibility issues.

Acknowledgement

- I certify that I have the authority to bind all organizations specified in Section A of this form. *
- I certify that all the required information has been included in this report, and. *
- I certify that the information in this report is accurate. *

Certification date (yyyy-mm-dd) * [2017-12-15](#)

Certifier information

Last name *		First name *	
MacMunn		Cathy	
Position title *	Business phone number *	Extension	<input type="checkbox"/> Check here if TTY
Administrator	613 279-2935	227	
Email *	Alternate phone number	Extension	Fax number
cmacmunn@centralfrontenac.com			613 279-2422

Primary contact for the organization(s)

Check if the primary contact is same as the certifier

Last name *		First name *	
Longmire		Donna	
Position title *	Position title other *	Business phone number *	Extension
Other	Administrative Assistant	613 279-2935	243
		<input type="checkbox"/> Check here if TTY	
Email *	Alternate phone number	Extension	Fax number
dlongmire@centralfrontenac.com			613 279-2422



Kennebec Shores Park

-  Parkland
-  Hike/Ski Trail
-  Scenic Lookout
-  Interesting Feature





Report 2018-011

Committee Information Report

To: Chair and Members of the Community Development Advisory Committee

From: Richard Allen, Manager of Economic Development

Date of meeting: February 8, 2018

Re: Verona Trailhead Design Options

Recommendation

That staff proceed with detailed design work for the Verona Trailhead concept, incorporating feedback from the committee;

And Further That staff be directed to seek an agreement with the Verona Community Association to add amenities purchased by the VCA to the Verona Trailhead site and to assist with site maintenance;

And Further That staff be directed to further investigate a public art installation and community engagement process with Stefan Duerst, sculpture artist;

And Further That staff be directed to review options for permit parking uses on the Verona Trailhead property;

And Further That any costs associated with the implement of the Verona Trail Head as noted in this report will be brought back to Council for approval prior to any development

Background

In 2016, Frontenac County Council provided direction to purchase and remediate the property at 6503 Road 38 (corner of Bellrock Rd.) for the purpose of developing a public trail access point. This property is located near the southern end of the village of Verona, and is referred to as the “Verona Trailhead” for the remainder of this report.

The remediation is now complete has been restored to gravel fill, with minor improvements until further direction is provided by Council. In the meantime, this site will be available for trail users to access the K&P Trail from Verona.

On November 20, 2017 staff conducted an open house event in partnership with the Verona Community Association to solicit design suggestions for the Verona Trailhead in order to provide the best use of space with public input to guide the amenities and design. In addition to the open house event, staff received suggestions for design of the site through a survey, open from November 1 to December 3, 2017.

The open house and survey also sought feedback in regard to the use of ATV's on the K&P Trail from Bellrock Rd to Craig Rd. Staff continue to engage with various stakeholders on this issue and it will be addressed in a future report.

Comment

Staff received a diversity of ideas for site design at the workshop as well as by survey. In no particular order, popular suggestions included the following:

- Accessible Washroom Facilities
- Drinking Water
- Ample parking, including parking for vehicles with trailers
- Free Wireless Internet Service
- Video Surveillance
- Bike Racks and Bike Repair Station
- Picnic Area / Shelter
- Maps of local trails and local businesses
- Camping Facility
- Extra Lighting
- Park Benches
- Village Kiosk (to be moved from Revell Ford)
- Canadian Flag
- Public Art
- Geological heritage park
- Ice pad for public skating
- Bench at Hardwood Creek Bridge

Please see Exhibit A for suggestions made from design exercises at the November Open House and Exhibit B for suggestions provided via online survey.

Verona Community Association

The Verona Community Association (VCA) has been in touch with staff since the initial purchase of the property and throughout the remediation process. The VCA have offered to assist in fundraising efforts for amenities at the Verona Trailhead and to provide support in the management and maintenance of the site. The VCA have been fundraising independently to purchase amenities for the site and have already procured the following items at their own cost:

- Canadian Flag and Pole
- Garbage receptacle
- 2 Park Benches



In addition, the VCA has requested that the information kiosk be moved from its current location at an auto dealership to be used at the trailhead.

Staff suggest that an agreement could be reached with the VCA to provide support in the day to day maintenance of the site, and would like direction to pursue this partnership. Any agreement developed would be brought to County Council for approval.

Public Art – Proposal from Stefan Duerst

[Stefan Duerst](#) is a Frontenac Ambassador and operates the Godfrey Sculpture Park. His art has been installed in public locations worldwide including Canadian Embassies in London and Morocco.

Staff solicited input on the potential for public art at this site from Stefan and he has proposed a collaborative community exercise to develop trail gateway structures – installations that could include artistic gates, arches or other vertical pieces. Stefan has experience with this type exercise and public art through the [Sydenham Street Pop-Up Park](#) that took place in the City of Kingston during 2015.

His proposal is included as Appendix D.

Site Design Considerations

Design concept drawings will be presented for review to the Community Development Advisory Committee at their meeting on February 8, 2018.

Staff propose that implementation of the final design be phased – with a small amount of landscaping and site preparation to take place in 2018 and additional amenities to be added during future years as site use increases.

The following assumptions and principles were considered while developing the conceptual layout.

- Clustered parking formations in Concept A are preferred by staff. Trail access can be provided between each cluster to prevent mixing of pedestrians and motor vehicles and reduces risk of vehicle reversing into collisions from the drive in parking formations in Concept B. Clustered parking also provides options for drive-through parking for vehicles with trailers.
- The location of the picnic area and green space was selected based on the existing trees on the site that can provide natural shade and shelter.
- Accessible parking should be close to the trail itself as well as the green space / picnic area.
- The southern edge of the site is South Frontenac Township property, but it is proposed to landscape this property to preserve visibility for vehicles using the intersection of Bellrock Road and Road 38.
- The existing trail access gate will be moved to the northern edge of the trailhead to prevent unauthorized access to the trail from the Trailhead.

Sustainability Implications

The Frontenac County Integrated Community Sustainability Plan (ICSP) identifies recreation and leisure as a focus area. This is also reflected in the County Economic Development Charter as a key priority and strength. Regions that celebrate their artistic communities and that encourage creativity have more vibrant, resilient economies.

Financial Implications

No budget dollars have been allocated for the development of the Verona Trailhead. All of the activities described above have some cost associated with implementation and installation, but detailed costs have not yet been allocated. Some costs may be covered through K&P Trail maintenance budget.

Organizations, Departments and Individuals Consulted and/or Affected

Community Development Advisory Committee
Survey Responses & Open House feedback
Malroz Engineering

Love the ice pad idea

I think there should be free WiFi

Several features like picnic + BIKE REPAIR STATION ARE AVAILABLE FOR THIS LOCATION.

MAKE IT SIMPLE + EASY

Geological Information

Don't have a camping area for cyclists/hikers

SEE SANSR have Railway Heritage Park Displays

Drinking Water

Picnic Shelter

Composting Toilets

Verona Trailhead: Site Design

Parking

CCTV Coverage - for users and vehicles left at trail head.



Please add your input for the design, and use of the Verona Trailhead. The trailhead's core function is to provide safe access to the K&P Trail for all users. Frontenac County is interested in what amenities may assist to improve the comfort and security of access.

Please feel free to add any suggestions on this board as well.

Infrastructure for food vendor (chip truck).
Potable water for all trail users. (campers, hikers, dogs, etc.)

ICE PAD

Canadian flag on pole

park benches

geological heritage park

It would be great to have access to foodland

Parking lot at Craig Road

picnic area

① Bench & picnic area
 ② Map of local trails (K&P & Paterson Trails) and location of local amenities
 ③ Bank visibility on Bellrock Peak. Improve with signage & cutting back vegetation in ROW.

Bench at Handwood Creek Bridge

extra lighting on Verona Trail Head

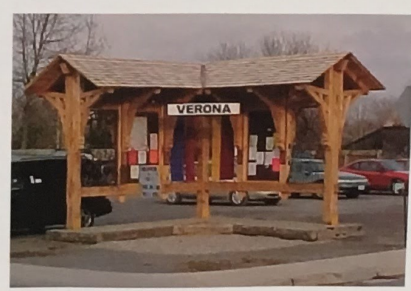
Village Kiosk

Wheelchair year round Outhouses

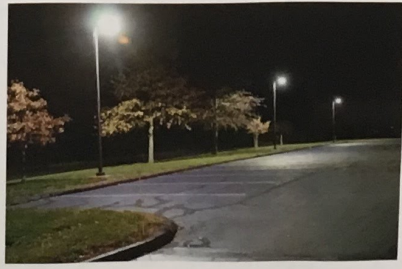
Picnic Area



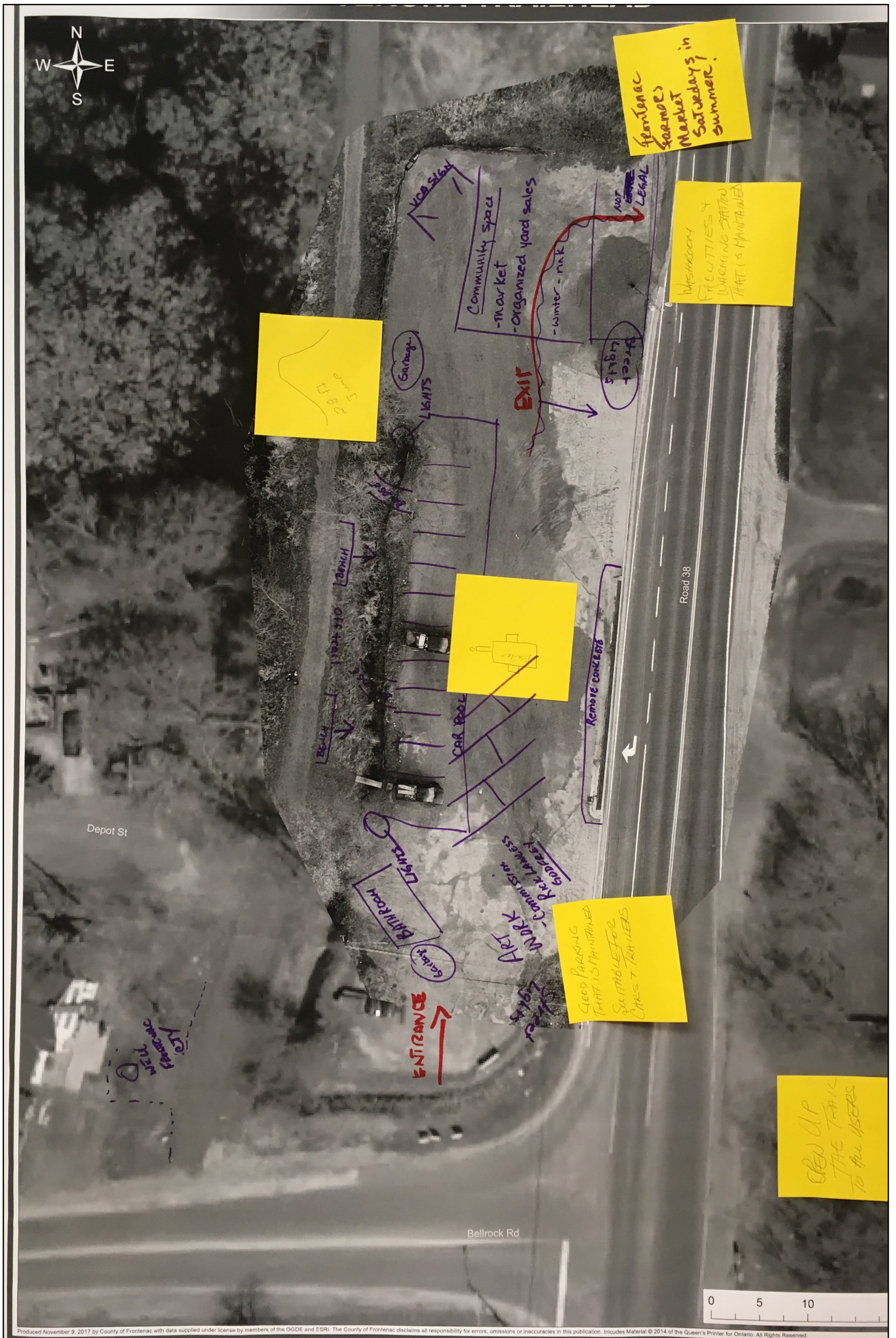
Verona Trailhead: Site Design Inspiration



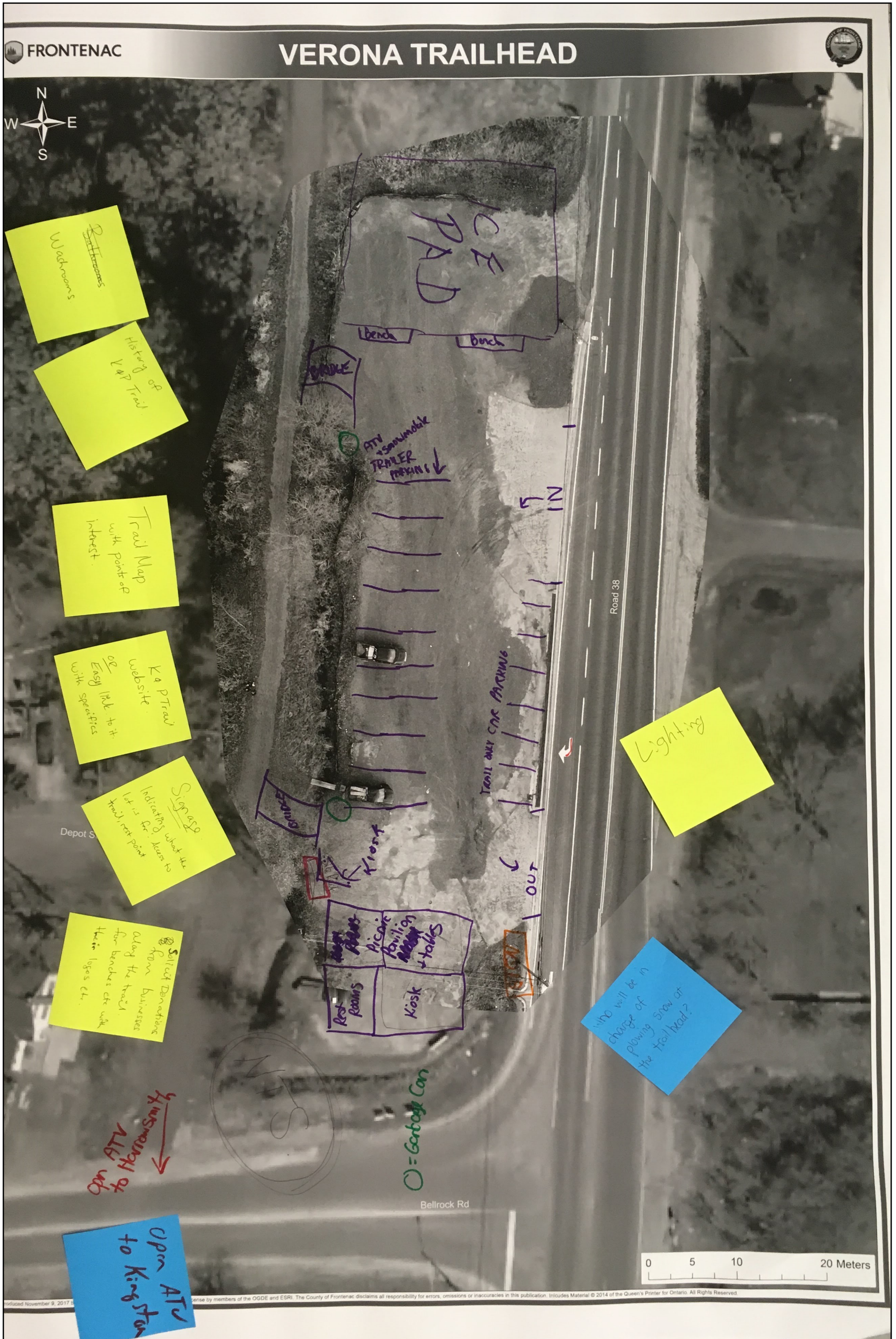
100 FT X 200 FT
ICE PAD
and warming
Hut











		1. How do you use the K&P Trail?							2. Please share your ideas for the Verona Trailhead
Reference Number	# of uses	Walking / Hiking	ATV	Cycling	Snow mobile	Dog Walking	Other	Horseback	
		145	136	124	80	69	23	15	
2017-11-07-001	3	[X]		[X]		[X]			
2017-11-08-001	3	[X]		[X]		[X]			Any amenities added to the Trailhead location should complement the natural environment and reflect the history of the Verona area. Washrooms would be great, but not the green Johnny-on-the-spot outhouses as those are just ugly. This area can become a focal point with wooden benches to sit, a few picnic tables and a garden bed planting of perennials and shrubs. There also needs to be provision for security lighting to reduce vandalism. The garbage cans should be the kind that are bear proof (as in the Ministry of Transportation rest stops along Hwy 17) and not the open big blue canisters type garbage bins, which encourages animals/sea gulls to distribute the garbage around the parking lot. People should actually be encouraged to take their waste with them (especially recyclables) and to "leave no trace"
2017-11-09-001	1		[X]						
2017-11-09-002	1							[X]	Adequate parking for trucks and horse trailers would be appreciated.
2017-11-09-003	2		[X]			[X]			The trail should be open to all uses as listed above. I am afraid of the vocal folks against motorized vech on the trails making up stories if this is what is allowed. Organizers should keep this in mind. ORV should be allowed.
2017-11-09-004	4	[X]		[X]		[X]	[X]		

		1. How do you use the K&P Trail?							2. Please share your ideas for the Verona Trailhead
Reference Number	# of uses	Walking / Hiking	ATV	Cycling	Snow mobile	Dog Walking	Other	Horseback	
		145	136	124	80	69	23	15	
2017-11-09-005	1	[X]							All motorized off-road vehicles (ATVs, snowmobiles) should not be allowed on the trail. Not only do school children use the trail to walk to and from school; seniors, families and the general public enjoy walking and cross-country skiing on the trail, where they want to enjoy the peace and quiet of nature by seeing and listening to the wildlife, experiencing the rippling of water where water exists, and carrying on a conversation. With motorized off-road vehicles speeding by, the pleasure of quietness will not exist. In addition, those homes on or near the trail will not only be exposed to noise pollution, but to air pollution created by the the motorized traffic. If walkers and motorized off-road vehicles were to share the trail, a major safety issue would present itself, which could result in personal injury or death. If motorized off-road vehicles were to gain access to the trail, the word would spread, which could result in motorized off-road vehicle owners from a wider radius, such as Kingston and other ATV communities using not only the trail, but the Verona K&P parking lot, thereby compounding the resulting problems of lack of adequate parking spaces, requiring cars to park on the highway roadside and individuals crossing the street, all of which can result in a potential accident. This would mean more motorized off-road vehicles on the trail and more risk of danger for individuals on foot and skis.
2017-11-09-006	3	[X]		[X]		[X]			I believe it would be beneficial if motorized off road vehicles were allowed on the trail. It would be much better than them being on the roads. Safer as well.
2017-11-09-007	1				[X]				

		1. How do you use the K&P Trail?							2. Please share your ideas for the Verona Trailhead
Reference Number	# of uses	Walking / Hiking	ATV	Cycling	Snow mobile	Dog Walking	Other	Horseback	
		145	136	124	80	69	23	15	
2017-11-09-008	3	[X]	[X]	[X]					I would love to see the trail in Verona include ATVs, I have recently purchased an ATV this summer and went down the back street towards Toppers then had to go on the highway to access the rest of the trail. As I was driving along, I felt so nervous about traffic coming up behind me, big trucks, cars whizzing by, I did not feel safe. ATVs, when on the trail do not need to be going 60-80 km/h but at a reasonable pace to enjoy scenery and watch out for pedestrians. I did have the occasion to meet other riders on the northern part of the trail and they gave a friendly wave and rode on. I have had the experience of meeting 2 horseback riders as well. I slowed down and stopped my ATV and they passed then continued on my way. It's just being respectful, and considerate for others. I had a lady talk to me about safety on the trail, while walking alone, it would be better to have more people on the trail for a security standpoint.
2017-11-09-009	2		[X]		[X]				
2017-11-09-010	2	[X]		[X]					In the interest of keeping this as a quiet, peaceful place, ATVs should absolutely not be allowed to use the trail.
2017-11-09-011	2	[X]		[X]					
2017-11-09-012	1		[X]						The entire K&P should be Motorized Off Road Vehicle (ATV, Side-by-Side) friendly. Regional trails exist already that encourage use by all outdoor enthusiasts. To do otherwise is discriminatory. Education and awareness is key for safety.
2017-11-09-013	1	[X]							
2017-11-09-014	3	[X]		[X]		[X]			
2017-11-09-015	2	[X]		[X]					Add a bicycle repair station. Add a map of the trail with access points clearly identified. Add what businesses may be accessed from the trail.

		1. How do you use the K&P Trail?							2. Please share your ideas for the Verona Trailhead
Reference Number	# of uses	Walking / Hiking	ATV	Cycling	Snow mobile	Dog Walking	Other	Horseback	
		145	136	124	80	69	23	15	
2017-11-09-016	1			[X]					Year-round washrooms would be convenient. Parking, benches, garbage are all great. We need signage along the trail where it crosses roads to let you know where exactly you are.
2017-11-09-017	2		[X]		[X]				I would like to see a 20'—30' shelter just a post and beam with a steel roof like Ken Garrett ball park in inverary but with bathrooms. Parking. No retail buildings on the property if anything some vending pop machine
2017-11-10-001	5	[X]	[X]	[X]	[X]	[X]			
2017-11-10-002	1					[X]			Our issue with opening up the trail to fully motorized traffic year round is simply proximity. In our specific instance the trail is very close to our home [redacted location] . The trail this past year received tremendous support from walking, running and cycling traffic which we're certain would greatly diminish when competing with ATV traffic year round not to mention the safety dynamic. Under the current model of fully motorized use from the junction of Craig and Doucette on to Sharbot Lake offers the most practical sense when considering balance with all users and little conflict with adjacent land owners. The section from the village of Verona should remain non-motorized to maximize the enjoyment of foot and cycle traffic with such close proximity to the density of those users. Respectfully, [redacted name]

		1. How do you use the K&P Trail?							2. Please share your ideas for the Verona Trailhead
Reference Number	# of uses	Walking / Hiking	ATV	Cycling	Snow mobile	Dog Walking	Other	Horseback	
		145	136	124	80	69	23	15	
2017-11-10-003	4	[X]	[X]	[X]	[X]				Large maintained area with facilities/services including: - Parking (for vehicles with and without trailers) - Fixed map of trail system(s) with map dispensers, comment cards and donation bin - Lighting - CCTV coverage - Washrooms - Potable Water (drinking fountain, water bottle filling, dogs and equestrian) - Waste and recycling collection - Roofed area with picnic tables or benches - Green space - Fixed loading ramp for ATVs and Snowmobiles - Power, water and waste hookups to support a food vendor
2017-11-10-004	2		[X]		[X]				
2017-11-10-005	1		[X]						
2017-11-10-006	1			[X]					I cycle up the K&P trail from Kingston, and a reasonable "day's" ride gets me to Verona and back. The suggestion of having washrooms is a good one; bicycle racks would be nice so that I can park my bike and head into town for a snack or lunch; a bulletin board on a kiosk with information on local amenities would also be useful -- especially if it is kept current with business hours and directions (or provide a map).
2017-11-10-007	4	[X]	[X]	[X]		[X]			I think that the K&P Trail is a tremendous addition to the villages trough which it passes and to the whole county. A few access points with parking for six cars or more are essential to its successful operation. There should be more extensive Trailheads at Kingston, Verona and Sharbot Lake with more parking, toilet facilities and potable water.

Reference Number	# of uses	1. How do you use the K&P Trail?							2. Please share your ideas for the Verona Trailhead
		Walking / Hiking	ATV	Cycling	Snow mobile	Dog Walking	Other	Horseback	
		145	136	124	80	69	23	15	
2017-11-10-008	2	[X]		[X]					I would prefer having a section of the KP trail where cyclists can safely and comfortably cycle without worrying about motorized vehicles. One direction or the other for 25K without motorized vehicle access would be nice. Perhaps we can allow motorized vehicles going north, but not south from Verona? Washrooms and water refill station would be nice to have.
2017-11-10-009	1							[X]	Consideration for parking horse trailers and maybe a hitching post for horses. A bathroom of porta potty and potable water. Signs explaining how to safely approach and pass horses. Even cyclists can create a nightmare for riders if they don't understand how to pass horses safely.
2017-11-11-001	2	[X]	[X]						
2017-11-11-002	1			[X]					The Verona Trailhead: To be called a trailhead, it should have some facilities, like parking, public restrooms, signage, map, rain shelter, and access for those allowed to use the trail. To allow the trail to be multi-use, beginning at Craig Rd where there is no place for parking, is not really allowing use. Since Verona is an end-point on the trail, there will only be atv traffic when atv's leave and return. There won't be steady traffic on the trail, except for locals who use the trail to visit local destinations.
2017-11-11-003	1		[X]						The trail should be open to ATV.
2017-11-12-001	1		[X]						I think the idea of having a shared space for parking is a great idea. It can also be used as a drop off point to start or end your use of the trail. It certainly has cleaned up the area.
2017-11-12-002	1		[X]						
2017-11-12-003	3	[X]		[X]			[X]		X-C skiing
2017-11-12-004	1		[X]						
2017-11-13-001	3	[X]	[X]			[X]			Would be nice to have some benches, washrooms and garbage bins.

Reference Number	# of uses	1. How do you use the K&P Trail?							2. Please share your ideas for the Verona Trailhead
		Walking / Hiking	ATV	Cycling	Snow mobile	Dog Walking	Other	Horseback	
		145	136	124	80	69	23	15	
2017-11-14-001	2		[X]			[X]			Benches and washrooms and garbage bins, picnic tables
2017-11-14-002	2	[X]		[X]					Given ATVs have access to roads/edge of roads I do not understand why they also are allowed on the KP trail. They go too fast for cyclists and walkers to be safe. It is bad enough that cross country skiing in the winter is impossible due to the snowmobile traffic. At least it is a little more understandable to give snowmobiles access since they have fewer alternatives and there are other places to go cross country skiing.
2017-11-15-001	2	[X]		[X]					Good to include welcoming signage with a map to show where you are and where you can go along with any things to be aware of on the trail.
2017-11-15-002	1				[X]				Gates should be opened to allow shared use of the trail. Will help all local business in the small communities
2017-11-15-003	3	[X]		[X]		[X]			Any improvements that keep users off the main roads is good d- and given the difficulties of navigating the current gates, some change is necessary - that said, there are options other than complete opening of the gates?
2017-11-15-004	1				[X]				Please don't be the one area to say no , the benefits outway the negative to your community and will connect your businesses to potential income .
2017-11-15-005	2	[X]				[X]			should be able to be used by everyone all year long.
2017-11-16-001	4	[X]		[X]		[X]		[X]	A bathroom at the trail parking lot would be great. A garbage can also essential. Signage for dog walkers to pickup dog poop perhaps. Another idea I had was at the trail parking put up signage for local businesses with a distance from the parking. Perhaps the business could pay for the cost. It would encourage tourism in Verona
2017-11-16-002	2	[X]	[X]						
2017-11-16-003	3	[X]		[X]		[X]			
2017-11-16-004	3	[X]	[X]		[X]				Open for atvs to travel from community to community.
2017-11-16-005	3	[X]	[X]		[X]				

		1. How do you use the K&P Trail?							2. Please share your ideas for the Verona Trailhead
Reference Number	# of uses	Walking / Hiking	ATV	Cycling	Snow mobile	Dog Walking	Other	Horseback	
		145	136	124	80	69	23	15	
2017-11-16-006	2		[X]		[X]				
2017-11-16-007	1		[X]					Being able to access the trail would be much safer than riding on highway 38. If we could unload and ride from there that would be great.	
2017-11-16-008	1	[X]							
2017-11-17-001	2	[X]				[X]			
2017-11-17-002	3	[X]	[X]		[X]			<p>signage is a must, including a network map, distance to next town, destinations especially if you consider this point a trailhead</p> <p>parking and a couple of benches also a great idea.</p> <p>garbage receptacles, washrooms, public art, fencing also great ideas but I would be concerned with abuse and vandalism such as illegal dumping of garbage and washrooms turning into a health hazard. Not sure how much time and resources the county could/would put into upkeep of such facilities. Obviously the more amenities and more pleasing it looks the more pride and support the public will have in expanding the system.</p>	
2017-11-17-003	1	[X]						I would like to see parking, trailhead signage, benches along the trail. It would also be nice to have a few tables and some form of washroom facilities. These amenities would make this portion of the K&P trail more accommodating to walking/hiking visitors.	

		1. How do you use the K&P Trail?							2. Please share your ideas for the Verona Trailhead
Reference Number	# of uses	Walking / Hiking	ATV	Cycling	Snow mobile	Dog Walking	Other	Horseback	
		145	136	124	80	69	23	15	
2017-11-17-004	2	[X]				[X]			I have no issue with the Verona Trailhead, other than I believe it would have to be routinely monitored in regards to cleanliness. If dumpsters or garbage receptacles are available, you will find persons leaving their household garbage there in order to avoid tagging it. In addition, I am concerned that there will be further congestion at that intersection. Being a PSW who travels the rural roads on a daily basis, the intersection of Bellrock Road and 38 is one of the hardest to make a left hand turn on due to people not obeying the speed limit in that area from any direction. Having an entrance there is going to further complicate the congestion as people will be in a hurry to get in or out of the parking lot making it even more dangerous for those just trying to either get to work or get home.
2017-11-17-005	1			[X]					
2017-11-17-006	3	[X]	[X]		[X]				Like the idea of benches, toilets etc. The question is, who pays? The snowmobilers? They're the only ones who pay to use the trail & maintenance of it. Can't see a sledder stopping to sit on a bench. So really, who are the benches for? Oh yeah, the walkers, joggers, etc. So why don't they start coughing up some funds for maintenance/upkeep? Why aren't they charged? Why don't they raise money to contribute?
2017-11-17-007	2		[X]		[X]				That would be a great start to open the trail at Bellrock rd. It would be nice to see the whole trail system opened up for A tv and not just for hikers who contribute nothing towards the trail system.
2017-11-17-008	3	[X]		[X]			[X]		Although I use the K&P for walking, skiing and cycling I am aware that the economic benefit comes from motorized traffic as well. I depend on snowmobile clubs to groom the trail, making cross-country skiing possible. In 8 years of winter use, I have never encountered an aggressive driver. For sure, I do get off the trail when snowmobiles or ATVs are approaching. Both trail users and villages along the trail need a 'share the road' approach for the trail to be economically viable and sufficiently resourced to be well-maintained.
2017-11-17-009	2	[X]		[X]					

		1. How do you use the K&P Trail?							2. Please share your ideas for the Verona Trailhead
Reference Number	# of uses	Walking / Hiking	ATV	Cycling	Snow mobile	Dog Walking	Other	Horseback	
		145	136	124	80	69	23	15	
2017-11-17-010	1		[X]						Public washrooms benches Picnic table. Garage bags
2017-11-17-011	4	[X]		[X]		[X]		[X]	
2017-11-17-012	1			[X]					I usually start from the trailhead in Kingston so don't have many ideas about the Verona Trailhead but adequate parking and good signage with km to other key points on the trail would be useful.
2017-11-17-013	3	[X]		[X]		[X]			
2017-11-17-014	4	[X]	[X]	[X]			[X]		<p>A small, floored shelter that could double as a campsite for touring cyclists would be great. There are a few shelters along the K&P Trail but they're mostly due to be replaced. Perhaps a new shelter at the Verona Trailhead will lead to rebuilding the others. In South Korea, there's a national bicycle path with shelters everywhere that cyclists are allowed to use for free as campsites. It's a model that could be followed in Frontenac County.</p> <p>A water source (fountain) would be nice to have as well.</p> <p>Finally, a panel with some key points on Leave No Trace may be useful.</p>
2017-11-17-015	4	[X]	[X]	[X]		[X]			<p>I think it is great idea to open it up to ATV's. I know the argument is safety and I agree safety is always a concern. I believe that the majority of the ATV riders are considerate, careful and respectful citizens however; I realize that some riders are disrespectful. We cannot all be painted with the same brush.</p> <p>Walkers, dog walkers, bicycle riders and snowmobile riders can be unsafe and disrespectful as well and we do not paint them all with the brush. I have seen walkers toss garbage, trespass on property along the trail, leave dog poop on the trail, I have almost been pushed right over the side as I couldn't get out of the way fast enough from extreme speed snowmobiles. I had to grab my dog and jump.</p> <p>I really feel for the most part that people are good and will do what is right. You will always have the disrespect idiots but I think this is the minority.</p>

		1. How do you use the K&P Trail?							2. Please share your ideas for the Verona Trailhead
Reference Number	# of uses	Walking / Hiking	ATV	Cycling	Snow mobile	Dog Walking	Other	Horseback	
		145	136	124	80	69	23	15	
2017-11-17-016	1			[X]					I use the the K&P trail at least 3-4 times a week and I find it very well groomed and clean. I usually travel from Kingston to Harrowsmith and enjoy it very much.
2017-11-17-017	2	[X]			[X]				Washroom and parking
2017-11-18-001	3		[X]	[X]	[X]				
2017-11-18-002	5	[X]	[X]	[X]		[X]	[X]		Open the gates!
2017-11-18-003	6	[X]	[X]	[X]	[X]	[X]		[X]	i BELIEVE ALL TAXPAYERS ARE CONTRIBUTING TO THIS TRAIL AND OTHERS THEREFORE IT SHOULD BE USED FOR ALL USES IN OTHER COMMUNITIES THIS SYSTEM WORKS WELL ATV HORSEBACK RIDING SNOWMOBILE WALKING JOGGING SKIING ETC
2017-11-18-004	3	[X]		[X]				[X]	Keep the motorheads off
2017-11-18-005	2			[X]		[X]			
2017-11-18-006	3	[X]		[X]			[X]		I agree with all of the ideas mentioned above. would there be any option to have a water station?
2017-11-18-007	1				[X]				
2017-11-18-008	3		[X]	[X]	[X]				I believe it should be multi use as I would use it for my atv alot more if the gates were open. I am not comfortable driving too far down the road. That being said there needs to be enforced speed limits and code of conduct for atv's. The sleds already have this. I also use the trail for dog walking and cycling and would love for the trail to be safe and inclusive of all uses.
2017-11-18-009	1		[X]						It would be great for the local tourism industry if ATVs are allowed to use trail. ATV riders are a responsible bunch that understand how to share trails with all varieties of users.
2017-11-18-010	1		[X]						I would love to have it open to drive my sxs to sharbot lake

		1. How do you use the K&P Trail?							2. Please share your ideas for the Verona Trailhead
Reference Number	# of uses	Walking / Hiking	ATV	Cycling	Snow mobile	Dog Walking	Other	Horseback	
		145	136	124	80	69	23	15	
2017-11-18-011	2		[X]		[X]				Signage to locate local businesses and tourism areas.
2017-11-18-012	3	[X]	[X]			[X]			
2017-11-18-013	2	[X]		[X]					
2017-11-19-003	3		[X]		[X]			[X]	Atv friendly would be nice so we can access public business
2017-11-19-004	2		[X]		[X]				
2017-11-19-005	2	[X]	[X]						
2017-11-19-006	4	[X]	[X]	[X]		[X]			
2017-11-19-007	4	[X]	[X]	[X]		[X]			
2017-11-19-008	5	[X]	[X]	[X]	[X]	[X]			I have been a snowmobile since 1967 and a ATV rider since 1985 and have put many miles on abandoned railroads in both Ontario and Quebec. Most towns welcome travelers and have no problems with a shared trail. We find the majority of trails bring you to the small towns, especially in the north, so their businesses can enjoy the spinoff of fuel, food and lodgings. I feel the trail should be open from Harrowsmith north.
2017-11-19-010	2	[X]		[X]					Washroom would be great
2017-11-19-011	2	[X]		[X]					I use the K&P trail for walking and cycling. One of the joys of this is not worrying about motorized vehicles. It is peaceful and safe. There are small side roads through the town of Verona that can be used by ATV users to avoid the busy Hwy 38 where it goes through the town.
2017-11-19-012	1		[X]						We think it would be great to use the trail for four wheelers as long as they were careful and curt Curtious this would help to be able to get to the outskirts of Verona and back to Parham
2017-11-20-001	2		[X]		[X]				Parking washrooms and maybe somewhere to buy snacks would be good.

		1. How do you use the K&P Trail?							2. Please share your ideas for the Verona Trailhead
Reference Number	# of uses	Walking / Hiking	ATV	Cycling	Snow mobile	Dog Walking	Other	Horseback	
		145	136	124	80	69	23	15	
2017-11-20-002	2	[X]				[X]			<p>Use of ATVs during certain hours to ensure children are safe while walking to and from school and to restrict noise for houses backing onto trail.</p> <p>Public Art Exhibits for local artists</p> <p>Benches</p> <p>Garbage receptacles (for poop and scoop)</p> <p>I believe it would enhance business opportunities for the community.</p>
2017-11-20-003	3	[X]		[X]			[X]		<p>I am a frequent K & P trail user. I run, bike and hike at least 3 times per week. I worry about ATV use as sometimes there are younger irresponsible users who are not respectful of other users. I'm also worried that they will tear up the trail. Just my thoughts.</p>
2017-11-20-004	1		[X]						
2017-11-20-005	1		[X]						
2017-11-20-006	2		[X]		[X]				<p>With the adequate parking space it will make a great jumping off place for people of all activities. It can only help with more money coming into local businesses.</p>
2017-11-20-007	3	[X]		[X]			[X]		<p>I have no specific notions about this.</p>
2017-11-20-008	3	[X]		[X]			[X]		<p>It would be great to see a community sign and shelter on site. Perhaps the market could move there.</p>
2017-11-20-010	2	[X]		[X]					<p>The trail can be used for various physical activity as it's well maintained, enjoy listening to the sounds of nature and it's inhabitants.</p>

		1. How do you use the K&P Trail?							2. Please share your ideas for the Verona Trailhead
Reference Number	# of uses	Walking / Hiking	ATV	Cycling	Snow mobile	Dog Walking	Other	Horseback	
		145	136	124	80	69	23	15	
2017-11-20-021	3	[X]	[X]	[X]					<p>1. Good parking 2. Information board with accurate maps of the trail and area 3. Security lighting 4. Benches / picnic tables / garbage bins 5. MTO style of outhouse 6. K&P Trail needs a better website</p> <p>The key thing that the Verona Trailhead needs is to make the gates & barriers safer to go through, especially for cyclists. As they are now, they are incredibly dangerous to pass through at any speed. I feel nervous passing through them and this negatively affects my experience on the trail. In August my wife badly broke her collar bone when passing through a poorly designed barrier on the trail. Fortunately, she did not require surgery although it was a concern of the orthopedic surgeon.</p>
2017-11-20-022	3		[X]	[X]	[X]				<p>With the good parking, it would be safer and more convenient to have ATVs access at the new trailhead. Also, some form of washroom facilities would be a bonus. I understand this could add a lot of expense but portables should work. The washrooms entering and exiting Algonquin Park would be good examples for a permanent washroom facility. A couple of LED parking lot lights would increase safety for all users. Garbage receptacles are a given.</p>
2017-11-21-001	1				[X]				
2017-11-21-002	4	[X]	[X]	[X]		[X]			<p>The trail should be open to all users, even those on ATV's. Most other townships in eastern Ontario allow ATV's on rail beds and it has resulted in a big boost to tourism. ATV'ing is very quickly growing as a sport and those who ride ATV's spend money in the communities they ride in.</p> <p>I frequently travel to other communities to ride my ATV. I regularly encounter people on bicycles and foot and there is never an issue sharing the trail with them.</p>

		1. How do you use the K&P Trail?							2. Please share your ideas for the Verona Trailhead
Reference Number	# of uses	Walking / Hiking	ATV	Cycling	Snow mobile	Dog Walking	Other	Horseback	
		145	136	124	80	69	23	15	
2017-11-21-003	3	[X]		[X]			[X]		I would prefer to see this trail to not be used for motorized vehicles and be a biking, walking, cross country ski trail.
2017-11-21-004	2		[X]			[X]			Garbage collection is always a great idea . Some people are careless. Available parking and signage is important .
2017-11-21-005	3		[X]		[X]	[X]			I believe the trail head should be a parking lot only with a couple of benches. Bathrooms should not be provided for a couple fo reasons. 1. The cost 2. By not providing bathrooms, people will go to local stores which will encourage them to buy things. 3. This is not a remote location along the trail and there are numerous washroom options available.
2017-11-21-006	3	[X]		[X]			[X]		Rest stop with information, directions, picnic for walkers, cyclists, snow mobiles etc and minor repair facilities for cyclists during the summer months. If possible some snack/refreshment opportunities would be ideal
2017-11-21-007	2	[X]		[X]					It would be lovely to have an area that you could sit or picnic at the trailhead. Since it is also kind of the entrance to the village signage for the trail should be large and done in a way that represents our village life, much like the Verona sign. A parking sign also so everyone understands that parking is permitted.
2017-11-21-008	1			[X]					Do not allow motorized vehicles on the southern portion of the trail. ATV users can legally already use roads to access the trail north of the Craig road. I feel allowing ATVs access to the trail system in the south is unwise, as motorized and non-motorized vehicles are not using the trail for the same reasons. The pedestrians and cyclists are using the trail for physical and mental health, to enjoy a peaceful and tranquil experience. We have lots of motorized trails in Frontenac county at present; known as roads, we do not need more.

		1. How do you use the K&P Trail?							2. Please share your ideas for the Verona Trailhead
Reference Number	# of uses	Walking / Hiking	ATV	Cycling	Snow mobile	Dog Walking	Other	Horseback	
		145	136	124	80	69	23	15	
2017-11-21-009	1			[X]					<p>Parking is important, particularly for cyclists. One of the big attraction of the K&P is that one can start at various points, and vary the distance cycled depending on weather, time constraints, etc. The K&P Trail is a highly desirable destination for cyclists.</p> <p>A washroom facility would be nice; I would think that a rented portable would be the best way to go to reduce the potential for vandalism.</p> <p>Personally, I don't think garbage receptacles out in plain site are workable; they just get filled up with household garbage. There is one discreetly located garbage receptacle just south of Orser Road in the Kingston portion of the K&P; it can't be see from the road or the parking area, only by people actually using the trail. I think this location seems to work, but basically, I can't see why the Trail can't be a "You pack it in -- you pack it out" designation.</p>
2017-11-21-010	4	[X]	[X]		[X]	[X]			remove the 6 gates on the Trail in South Frontenac so that 4 wheelers and snowmobilers can use the Trail unimpeded
2017-11-21-011	3	[X]		[X]		[X]			The Verona Trail is a calm peaceful trail full of wildlife. I would love to see a well developed parking lot with a picnic area, rest room facilities and groups such as the Frontenac Farmers Market setting up there. It would be a place where young families could meet and walk the trails.
2017-11-21-012	1	[X]							Adult exercise / playground

		1. How do you use the K&P Trail?							2. Please share your ideas for the Verona Trailhead
Reference Number	# of uses	Walking / Hiking	ATV	Cycling	Snow mobile	Dog Walking	Other	Horseback	
		145	136	124	80	69	23	15	
2017-11-21-014	2	[X]					[X]		<p>I can't be at the meeting, due to a prior commitment, but would be interested in getting involved.</p> <p>Signage & history would be great. I'm not fond of ATV on it, as they tend to wreck the trail they ride on. I don't mind sharing it with snow-mobiles, though I don't have one myself. They help groom it for winter hiking, snowshoeing and cross country skiing.</p> <p>Trash cans should be provided at every road crossing.</p> <p>Porta-johns could be nice, if they can be maintained.</p>
2017-11-21-015	4	[X]	[X]	[X]		[X]			<p>My wife and I like to ATV to Sharbot Lake every week-end for breakfast. We find it uncomfortable to drive 38 and Craig road to get to the trail but its the only way.</p>
2017-11-21-016	2	[X]		[X]					
2017-11-21-017	1			[X]					<p>Last time I was in that area the trail was in fairly good shape, though the surface could be somewhat improved. It would be nice to have a series of connectors to the main street, particularly near restaurants, where the rider would find (decent) bike racks.</p>
2017-11-21-018	4	[X]	[X]	[X]	[X]				<p>I would like the Trailhead to be accessible to Motorized Off Road Vehicles and Snowmobiles. It is my understanding that this is to be a mult use trail so there should be free access without gates or barriers of any kind.</p>

Reference Number	# of uses	1. How do you use the K&P Trail?							2. Please share your ideas for the Verona Trailhead
		Walking / Hiking	ATV	Cycling	Snow mobile	Dog Walking	Other	Horseback	
		145	136	124	80	69	23	15	
2017-11-21-019	4	[X]	[X]	[X]	[X]				The Verona Trailhead should have washrooms, garbage receptacles and parking. There should not be a barrier to deny access to Off Road vehicles or Snowmobiles who would otherwise have to drive on the highway through Verona which is already very narrow to drive through.
2017-11-21-020	3	[X]		[X]		[X]			It should be a multi use un motorized trail.
2017-11-21-021	4	[X]	[X]		[X]	[X]			My version of the trail head at Belrock road would include a cement block building with heated men's an women's washrooms and a common change area for those who would be snowmobiling. It should include a bulletin board and trail map showing your location and the EOTA trail system and OFSC snowmobile trails for orientation. I believe this trail head and trail system should be open to all users including ATV's. I believe in order to take full advantage of the so called ECO tourism is to open the trail system to those who will travel on the system and spend money in our local communities at such places as restaurants, gas stations, accommodations,hardware stores etc . These are the motorized users who cover a lot of ground and require the above mentioned services. As much as I believe the trail should be open to all users the motorized trail users are the one's who will spend the most money in our local communities. They are also the only group who actually pay for permits to use the trails and in doing so help in the financial up keep of said trail system.
2017-11-21-022	6	[X]	[X]	[X]	[X]	[X]	[X]		-what an incredible economic growth opportunity to put verona on the map! -compare to tweed, barry's bay and bancroft - a welcoming place for ALL trail users to gather, socialize, spend \$ on accommodations, food and beverage, entertainment and make purch
2017-11-21-023	5	[X]	[X]	[X]	[X]	[X]			Use should be focused on people access only. Anything else will promote mis use by vehicles with trailers, undesirable ATV's, irresponsible people.
2017-11-22-001	2		[X]		[X]				

		1. How do you use the K&P Trail?							2. Please share your ideas for the Verona Trailhead
Reference Number	# of uses	Walking / Hiking	ATV	Cycling	Snow mobile	Dog Walking	Other	Horseback	
		145	136	124	80	69	23	15	
2017-11-22-002	1		[X]						I think it would be a wonderful idea as there are not very many ATV trails or trails that allow ATVs on the trails that there are n this area. In order for us to go ATVing, we have to travel to either Kaladar or Belleville and start from there. It would be wonderful to have a starting area in the Kingston area. Super idea. Iâ€™ll keep my fingers crossed... and the trails We ride on are for everyone... walking, bicycles, snow mobiles, ATVING and everything. I find the people on the trails whether motorized or not, for the most part, are very respectful of others on the trail whether those are walking their dogs, walking or even on other motorized vehicles
2017-11-22-003	1		[X]						I think it would be a wonderful idea as there are not very many ATV trails or trails that allow ATVs on the trails that there are n this area. In order for us to go ATVing, we have to travel to either Kaladar or Belleville and start from there. It would be wonderful to have a starting area in the Kingston area. Super idea. Iâ€™ll keep my fingers crossed... and the trails We ride on are for everyone... walking, bicycles, snow mobiles, ATVING and everything. I find the people on the trails whether motorized or not, for the most part, are very respectful of others on the trail whether those are walking their dogs, walking or even on other motorized vehicles
2017-11-22-004	2	[X]		[X]					I don't know if this is feasible, but it would be great it volunteers could be found to be there and sell snacks and drinks. I would certainly be willing to do half a day a =week.
2017-11-22-005	3	[X]	[X]		[X]				Parking should be open enough to permit truck and trailer parking. A street light would be nice and even a surveillance camera would be great.
2017-11-22-006	1			[X]					
2017-11-22-007	2		[X]		[X]				With membership fees from trail passed and Atv/snowmobile clubs the tails can be maintained on an ongoing basis.
2017-11-22-008	3	[X]		[X]		[X]			

Reference Number	# of uses	1. How do you use the K&P Trail?							2. Please share your ideas for the Verona Trailhead
		Walking / Hiking	ATV	Cycling	Snow mobile	Dog Walking	Other	Horseback	
		145	136	124	80	69	23	15	
2017-11-22-009	2		[X]		[X]				
2017-11-22-010	2	[X]		[X]					Shade (trees), washroom, bike maintenance station, picnic table, bike rack, bench, solar cell phone charger, large permanent map showing entire K&P Trail, entire Cataraqui Trail and adjoining sections of Rideau Trail. No motorized vehicle access.
2017-11-22-011	2	[X]		[X]					No ATV!!! Promote nature and exercise....not noise and pollution
2017-11-22-012	1		[X]						Opening the trail to atvs will generate more business in the community with stop at the restaurants, fuel and overall other items that the village can provided.
2017-11-22-013	4	[X]	[X]	[X]	[X]				
2017-11-22-014	1		[X]						I love the idea of opening the trail up to responsible recreational riders(atv/SxS trail pass purchasers)
2017-11-22-015	3	[X]		[X]			[X]		To be honest, I have not cycled that far but did cycle from Harrowsmith to Verona and loved it and would like to be able to continue to enjoy cycling along the K and P trail.
2017-11-22-016	1		[X]						Prefer parking and getting on the trail with minimal road driving. Washrooms would also be a plus
2017-11-22-017	3	[X]	[X]	[X]					Wonderful spot for trail users and as a gateway to the Verona community. I am very concerned about atv use between road 38 and Craig road. Can I suggest an alternate route using Craig Rd to the trail entrance at Doucette Lane? My house at 1024 Masonville is too close to the trail for a tv use.
2017-11-22-018	1	[X]							I believe there should be an outhouse as well as signage with maps of the trails to surrounding areas benches as it would be a rest stop as well as starting point for some.

		1. How do you use the K&P Trail?							2. Please share your ideas for the Verona Trailhead
Reference Number	# of uses	Walking / Hiking	ATV	Cycling	Snow mobile	Dog Walking	Other	Horseback	
		145	136	124	80	69	23	15	
2017-11-22-019	4	[X]		[X]		[X]	[X]		I don't personally find any trailhead amenities necessary. The trail itself is all I need. Garbage receptacles would hopefully help discourage litter though.
2017-11-22-020	3	[X]		[X]		[X]			When biking we need washroom facilities. There is an outhouse north of Godfrey and a bike store in harrowsmith with a washroom. A bench to pause and rest on, like harrowsmith Garbage cans A map similar to the ones on the trail in Kingston. The history of the area. A plaque or two to engage people using the trail. Kilometre markers - distance to..... Kingston, harrowsmith Sharbot Lake, Godfrey, etc Directory - things to do / shop in Verona and area.
2017-11-22-021	2	[X]	[X]						No tractor trailer parking but parking for any carpooling vehicles as well as vehicles who are accessing the northern section of the trail
2017-11-23-001	2		[X]		[X]				A parking and information booth with maps and that type of information would be very helpful
2017-11-23-003	2		[X]		[X]				
2017-11-23-004	2	[X]		[X]					Washrooms would be great. A map of the village, businesses close by and notable sites (ie/ McMullen beach etc.) A map of the trail with kms and hamlets etc. Trashcans and benches. Close to the entrance to the trail makes the most sense to me if it's possible. Contact information should there be a need to have something fixed.
2017-11-23-005	2		[X]		[X]				Parking, washrooms, signage, sponsored board advertising
2017-11-23-006	2	[X]		[X]					I enjoy cycling this section of the trail. My hope is that motorized vehicles will not be allowed on the trail in order to avoid increased noise, air pollution and potential accidents along the path. Motorized vehicles on the trail are the antithesis to hiking, walking and cycling as pertains to eco-friendly and environmentally sound recreation.

Reference Number	# of uses	1. How do you use the K&P Trail?							2. Please share your ideas for the Verona Trailhead
		Walking / Hiking	ATV	Cycling	Snow mobile	Dog Walking	Other	Horseback	
		145	136	124	80	69	23	15	
2017-11-23-007	2		[X]	[X]					
2017-11-23-008	1			[X]					
2017-11-23-009	3	[X]		[X]		[X]			I would like to see an attractive parking and rest area for the people who enjoy walking, hiking, and bicycling along the trail. Installation of clean and regularly maintained washrooms would be great. Also a picnic area would be nice. I visited many of these types of settings along the trans Canada while travelling through northern Ontario. A sign with information about the trail and local history would bring positive attention to Verona.
2017-11-23-010	1			[X]					
2017-11-23-011	1	[X]							
2017-11-23-012	3	[X]		[X]				[X]	
2017-11-23-013	3	[X]		[X]		[X]			Benches along trail would be great, cleaning up the parking area and having signage for trails would be a plus for sure.
2017-11-24-001	1		[X]						All of the above mentioned items would be welcomed. The new facilities built in Ompah are a good starting model. I would strongly urge enforcement of trail passes from an OFATV club or EOTA club to ensure responsible usage.
2017-11-24-002	2	[X]		[X]					It would be great to have safe access to the Foodland by bicycle. The road to and from the Foodland from the trail is not fun on the bike.
2017-11-24-003	2	[X]					[X]		I think that it's great now where people of any age can feel comfortable using whether on foot or cycling. It is great as a natural environment where the school children can walk and explore for school classes. I have used it and it a peaceful walk
2017-11-24-004	2		[X]		[X]				The trail should be used by all. There should be fees charged for trail pass for use to cover cost of maintenance and enforcement. Fee structure should be divided into non-motorized and motorized.

		1. How do you use the K&P Trail?							2. Please share your ideas for the Verona Trailhead
Reference Number	# of uses	Walking / Hiking	ATV	Cycling	Snow mobile	Dog Walking	Other	Horseback	
		145	136	124	80	69	23	15	
2017-11-24-005	1		[X]						Yes I have 2 atvs that my wife and I use, what gives the right for snowmobiles to use the trail not atvs they are MOTORIZED aren't they I can go and get tracks for my atvs .
2017-11-24-006	2		[X]		[X]				
2017-11-24-007	3	[X]		[X]			[X]		I think it is a great idea to have some benches and picnic tables, garbage/recycling access available. Bathrooms would be an asset as well, but maintenance of them might be an issue. As a woman who uses the trail on an almost daily basis, security is somewhat of an issue as well. So something of an emergency signal system would be a great thing to have at the access point, or even throughout the trail.
2017-11-24-008	4	[X]	[X]		[X]	[X]			I like the idea to create a parking area.
2017-11-24-009	3	[X]		[X]		[X]			Please include wayfinding signage showing directions to the nearest towns (and the amenities in the towns) garbage bins and parking.
2017-11-24-010	3	[X]	[X]			[X]			Benches Recycle and garbage bins would be nice Washrooms
2017-11-24-011	1		[X]						
2017-11-24-012	3	[X]	[X]	[X]					It is possible that this trail that can be used for everyone. Proper signage , speed limits etc. would be helpful. This trail connects to other trails that are used for atvs and snowmobiles
2017-11-24-013	2	[X]		[X]					Every summer I look forward to Cycling on the K&p Trial . Everyone from the patrons walking their dogs, Horseback riders and other Cycling are always courteous and respectful of your personal enjoyment of the trail. It is a real privilege to have such to treasure in our area. Amnesties that your greatly increase the enjoyment of the trail would be Washrooms and increasing the number of garbage receptacles to help keep the area free of debris.

		1. How do you use the K&P Trail?							2. Please share your ideas for the Verona Trailhead
Reference Number	# of uses	Walking / Hiking	ATV	Cycling	Snow mobile	Dog Walking	Other	Horseback	
		145	136	124	80	69	23	15	
2017-11-24-014	1		[X]						
2017-11-25-001	1		[X]						Yes. Garbage cans and washrooms would be great.
2017-11-25-002	3	[X]	[X]	[X]					Parking, garbage disposal and washrooms are necessities. The other items on the list would also be nice to have.
2017-11-25-003	1		[X]						I would like to see parking and washrooms [that can be used year round] . I used the trail once so far and had to park and unload along the road at Godfrey which is not very safe and you miss the KP from Craig's Rd to Godfrey which is one of the prettiest parts of the trail. Perhaps a local resident might be interested in setting up a canteen business at the Trailhead getting both trail users and road users. Duane Ramsay, Inverary
2017-11-25-004	1			[X]					Clear, recognizable signage to indicate trailheads, plus proper gates that allow non-motorized trail use. Information signage for trail users and those exiting the trail (e.g.: trail maps, local amenities).
2017-11-25-005	3	[X]	[X]		[X]				This would be a safe parking area for the community. Many purposes.....carpooling parking area for Kingston commuters. Safe parking area for any person wishing to access the K & P trail. Signage would be great to promote the community of Verona.
2017-11-25-006	2	[X]	[X]						
2017-11-26-001	1		[X]						allowing 4 wheelers access would eliminate hiway travel and would be safer for all concerned, any argument that riding on the trail is unsafe is not fully accurate, is no different than skidoos which are allowed on the trail in the winter months at speeds of 50kms and people continue to walk and ski the trail in unison

		1. How do you use the K&P Trail?							2. Please share your ideas for the Verona Trailhead
Reference Number	# of uses	Walking / Hiking	ATV	Cycling	Snow mobile	Dog Walking	Other	Horseback	
		145	136	124	80	69	23	15	
2017-11-26-002	3		[X]		[X]	[X]			I believe extending the trail access for ATVs is a wonderful idea, It will allow so much more ATV traffic to be brought into Verona for the purposes of using the gas station (Toppers) as well as the resturant and such as Mom & Muddy waters which will help build our community. Currently I know when I use the trail for ATV riding I go north into Sharbot Lake for lunch & have experienced many other trail users who state that they would love to travel south on the KP trail into Verona but do not like riding the roads to go there for lunch, this would allow safer travel into the village. Also, I know when using the trail that it is very common heading north for example that I will run into other trail users (such as walkers, horse, etc) and I always travel at a appropriate rate of speed in order to ensure the safety of others, and I also know that when I'm walking the trail I make sure to listen for motorized vehicles in order to ensure I am visible to them to protect my own safety. I don't see why this practice cannot be extended into Verona as it's already working for so many other communities. To finish off I believe this is a wonderful choice & will benefit our village wonderfully.
2017-11-26-003	1		[X]						
2017-11-26-004	3	[X]		[X]		[X]			Post signs to remind people to clean up after their pets and to not litter or leave any trash along the trail. Respect private properties and no trespassing. The noise issue of motorized vehicles needs to be addressed, especially for evenings and overnight.
2017-11-26-005	2		[X]		[X]				Verona is a good location half way between Kingston and Sharbot Lake, so it would be to see the trail head to be a starting point for people who wish to go north or south. The gates that have bee installed are a terrible inhibitor to the use of the trails by ATV's and Side by Sides which are the upcoming recreation vehicle. With all due respect these users are the people able and willing to pay for the long term up keep of the trails.

		1. How do you use the K&P Trail?							2. Please share your ideas for the Verona Trailhead
Reference Number	# of uses	Walking / Hiking	ATV	Cycling	Snow mobile	Dog Walking	Other	Horseback	
		145	136	124	80	69	23	15	
2017-11-26-006	2		[X]		[X]				I am a land owner in Frontenac County and avid snowmobiler and ATVs and believe the trail must allow access. The economic impact is huge and full access is important.
2017-11-26-007	2		[X]		[X]				
2017-11-26-008	2		[X]		[X]				Verona is a good place to stop on the trail between Kingston and Sharbot Lake. I believe that all people and uses can coexist. ATVing like snowmobiling is a growth business with good economic spin offs for the community.
2017-11-26-009	2		[X]		[X]				rest area in the way of a small subway with washrooms..could be at the corner of Highway 38 and Bellrock Road...or another spot could be near Godfrey General Store..
2017-11-26-010	2		[X]		[X]				There could be a rest area at the corner of Highway 38 and Bellrock Rd or near Godrey General Store...with washrooms
2017-11-27-001	2		[X]		[X]				There could be a rest area at Highway 38 and Bellrock Road or one near Godfrey General Store with washrooms
2017-11-27-002	3	[X]	[X]		[X]				A wonderful mid point between Kingston and Sharbot Lake for parking and entry to the trail. Probably in the initial stages the point needs to be good parking (maintained) and some reasonable facilities such as a simple washroom (maintained). Because garbage is a reality a maintained receptacle would be appropriate.
2017-11-27-003	1	[X]							
2017-11-27-004	3		[X]		[X]			[X]	Should be open all year so everyone can enjoy it.
2017-11-27-005	2	[X]		[X]					I do not think we need high cost reception and information centers for this trail. I like the natural aspect when using this trail and feel that we often get carried away with expensive signage, etc. which then, in turn, requires future maintenance and repairs. Any money available needs to be retained for the ordinary maintenance required on a yearly basis.
2017-11-27-006	2	[X]		[X]					Although I recognize these things are a maintenance issue, toilet facilities and garbage disposal seem to be in short supply along the trails.

		1. How do you use the K&P Trail?							2. Please share your ideas for the Verona Trailhead
Reference Number	# of uses	Walking / Hiking	ATV	Cycling	Snow mobile	Dog Walking	Other	Horseback	
		145	136	124	80	69	23	15	
2017-11-28-001	3	[X]		[X]		[X]			Benches, parking, and signage including maps of the local trails and history of the trail.
2017-11-28-002	1	[X]							Any amenities you are considering adding would be welcome, but I believe allowing motorized vehicles to use the trail would be inappropriate. It would be a danger to hikers/walkers as well as to the operators of the motorized vehicles. It would also remove one of the attractions of this trail, which is the opportunity to enjoy nature without the distraction these vehicles represent. I believe most hikers use the trail in the summer, so the fact that snowmobiles are allowed to use the trail seems irrelevant.
2017-11-28-003	3	[X]		[X]		[X]			I love using the trail for walking and running. It is a nice peaceful place to get away from the noise and danger that comes from the highway/streets and anywhere else that motorized vehicles are allowed access.
2017-11-28-004	1		[X]						
2017-11-28-005	2		[X]		[X]				
2017-11-28-006	1		[X]						
2017-11-28-007	1		[X]						I would love to see this trail extended from Sharbot Lake to Verona and even Kingston/Perth for ATV'ing. This would be great to take to the Verona Market and even Westport to shopping and touring the town.
2017-11-28-008	2		[X]	[X]					I would like to see the trail opened up to ATV's the full length. I have found that most users are very courteous and willing to share with all. It would be great if we could all share the full length of the trail. A parking area already exists in Sharbot Lake and could be used as an entry point for all.
2017-11-28-009	1				[X]				We snowmobile from Harrowsmith and would like to snowmobile to Sharbot Lake and beyond on the trail through Verona. We have stopped in Verona many times for food at the restaurants. This is an excellent use of the resource and we need to keep the trail open to as many users as possible

		1. How do you use the K&P Trail?							2. Please share your ideas for the Verona Trailhead
Reference Number	# of uses	Walking / Hiking	ATV	Cycling	Snow mobile	Dog Walking	Other	Horseback	
		145	136	124	80	69	23	15	
2017-11-28-010	4	[X]	[X]	[X]	[X]				Make the trail accessible to all outdoor enthusiasts. This will likely generate more funds to allow for trail improvements and upkeep
2017-11-28-011	3		[X]		[X]	[X]			I'd love to have closer access I the gas stations and resteraunts in Verona without having to drive all along 38, I think it's safer for everyone and would boost local business !
2017-11-28-012	2	[X]				[X]			I love waking on the trail, specifically for its peacefulness. It's wonderful to be able to enjoy the countryside without the roar and pollution of off road vehicles.
2017-11-28-013	3		[X]		[X]	[X]			I would like to see a parking area, a small covered shelter & maybe a canteen or vending machines & bathrooms.
2017-11-28-017	2	[X]		[X]					I think washrooms at the trail heads would be nice. I have been caught myself with no where to go. Definitely garbage receptacles periodically along the trail. Benches would be nice, but I have used rocks and stumps to rest on.
2017-11-28-018	3		[X]	[X]	[X]				Trail should be open for use by all citizens not just limited to a certain limited few and should be maintained and policed accordingly.
2017-11-28-019	2		[X]		[X]				We need to support trails and access to them for all to use regardless if your walking or riding through on an Atv or Snowmobile. There is a economic advantage to Venora as all business will see the benefit. I see many people using the trail for walking and sharing it fine.

		1. How do you use the K&P Trail?							2. Please share your ideas for the Verona Trailhead
Reference Number	# of uses	Walking / Hiking	ATV	Cycling	Snow mobile	Dog Walking	Other	Horseback	
		145	136	124	80	69	23	15	
2017-11-28-020	1		[X]						<p>My wife and I retired to Frontenac County approx 3 years ago One of the must have we wanted was easy access to ATVing trails. We frequently drive the trails between Glen Tay and Kalidar. The Idea of the K & P trail being opened from Sharbot Lake to Verona was welcome news, on 2 fronts. New trails to ride and having a trail go to Verona would give us the option to have an enjoyable trail ride that would give us easy access to fuel and food and drink. Something that is lacking on most of the trail. Most weekends and frequently though the week we enjoy our trail rides. From our experience most use of the trails have been friendly and respectful of the other users. The vast majority of user we encounter are riding ATV's, once in a while a cyclist or two, sometimes a hiker and on one or two occasions someone on horseback. I am sure extending this trail for use by ATVers like us would bring people into the gas stations and restaurants of the area Extending it beyond Verona would also benefit the local businesses. One other note I would like to add is the lack of enforcement on the trails in Frontenac County, after driving the trails for approx 3 years and thousands of Kilometers we have only been checked once ...It was while driving though Sharbot Lake on Canada Day 2 years ago. It would also be great if a local business would sell the EOTA trail passes locally.</p>
2017-11-28-021	1			[X]					<p>The K&P trail in Verona should remain non motorized from Bellrock to Craig roads. My view is that Vernon's downtown should open itself up to the trail with parking and and in the future a fully developed trailhead. The Trail could become the heart of the town, rather than the linear corridor that exists now. Being situated midway between Kingston and Sharbot lake would make Verona a great future overnight stop with B&B, conuntry Inns, restaurants etc. This is an economic as well as recreational opportunity!</p> <p>For a very successful model search on google maps for Winter Garden Florida, and. See how they redeveloped their town around the West Orange Trail. Similar could apply to Verona.</p>

		1. How do you use the K&P Trail?							2. Please share your ideas for the Verona Trailhead
Reference Number	# of uses	Walking / Hiking	ATV	Cycling	Snow mobile	Dog Walking	Other	Horseback	
		145	136	124	80	69	23	15	
2017-11-28-022	1	[X]							Parking lot with bike stands that would be lockable.
2017-11-28-023	2		[X]					[X]	It would be nice to have washroom and garbage. Directional signage would be great as well.
2017-11-28-024	2	[X]		[X]					It would be lovely to have a pavilion and picnic table area. Local art would be nice to include.
2017-11-28-025	1						[X]		Washroom: I would love to see a washroom or even just a portable toilet put at the Trailhead. Shelter/Map/Pavilion: A small shelter with a couple of benches would be wonderful to have in the event of bad weather and to get out of rain, snow or sun if needed. This could be included as a mini-pavilion that possibly had a large map of the trail, where you are at, how far to the next village, etc... Having this sort of map with a billboard of advertising opportunities for businesses in the area would help the local economy and also generate revenue for upkeep of Trailhead.
2017-11-29-001	2		[X]		[X]				Washrooms, parking,
2017-11-29-002	2	[X]		[X]					
2017-11-29-003	3	[X]		[X]		[X]			Definitely washrooms, garbage receptacles and benches.
2017-11-29-004	3	[X]		[X]		[X]			Bike stands, parking, outhouse, direction signs

		1. How do you use the K&P Trail?							2. Please share your ideas for the Verona Trailhead
Reference Number	# of uses	Walking / Hiking	ATV	Cycling	Snow mobile	Dog Walking	Other	Horseback	
		145	136	124	80	69	23	15	
2017-11-29-005	1		[X]						It would be great to see the off road vehicles allowed on the trail starting in Verona instead of Sharbot Lake. Spend a weekend in Sharbot Lake or Calabogie and you will see how much revenue the dirt bikes and ATVs bring in. A month ago I stayed at a motel that was completely filled with dirt bikes!
2017-11-29-006	1		[X]						I believe that the trail should be opened up for everyone to use it from snowmobiles, walking, bike, ATV's, horses, etc.
2017-11-29-007	3	[X]	[X]			[X]			
2017-11-29-008	2	[X]	[X]						Parking, benches and washrooms would be appreciated.
2017-11-29-010	3		[X]	[X]		[X]			Live in Sydenham and really want the ability to ATV here.
2017-11-29-011	3	[X]	[X]			[X]			Some benches would be great! Maybe some washrooms and garbage cans too! It would be great to allow atv to enter here as there is room for parking

		1. How do you use the K&P Trail?							2. Please share your ideas for the Verona Trailhead
Reference Number	# of uses	Walking / Hiking	ATV	Cycling	Snow mobile	Dog Walking	Other	Horseback	
		145	136	124	80	69	23	15	
2017-11-29-014	2			[X]				[X]	<p>I am pleased that you are locating the trailhead at this location and have several ideas that I'd like you to consider:</p> <p>For cyclists: A source of drinking water would be very much appreciated. Benches/picnic tables/bike racks also. If you can't provide water at the location perhaps you could encourage the nearby restaurant to accommodate cyclists' water needs?</p> <p>Toilets---basic ones would be fine.</p> <p>Trail map with some details of the roads nearby would be useful so we could do some loops in the area rather than simply a there-and-back trip. This is the one complaint I've heard about the Cataraqui Trail maps that are out there---no labels for small cross-roads which would be very useful for route-planning.</p> <p>For equestrians: A quiet and roomy place to park horse-trailers and unload the horses. Some are quite spooked by the traffic noise and so it would be desirable to have this area at the rear part of the trailhead area.</p> <p>Trail-gates/barriers: Some of the gates on the K&P are a bit narrow for horses to go through and on a few we have noticed sharp bolt-edges protruding which could injure riders/horses/cyclists. Please keep the needs of these users in mind when designing and installing the barriers.</p>

		1. How do you use the K&P Trail?							2. Please share your ideas for the Verona Trailhead
Reference Number	# of uses	Walking / Hiking	ATV	Cycling	Snow mobile	Dog Walking	Other	Horseback	
		145	136	124	80	69	23	15	
2017-11-29-016	6	[X]	[X]	[X]	[X]	[X]		[X]	<p>I think that this location being at the entrance of the village of Verona should be reflective of the village. Providing a welcoming atmosphere. For people utilizing the trail a bathroom, garbage receptacles would help ensure that the trail is kept clean.</p> <p>However, to have it be functional, there will be a need for maintenance resources, security and surveillance to ensure that what is put in the location is maintained. Bathrooms can be quickly become an eyesore if not kept clean. Garbages would overflow and become a dumping ground for people who didn't want to buy garbage bag tags.</p> <p>A small section for carpool parking would be beneficial.</p>
2017-11-29-017	2	[X]				[X]			<p>I would love to see:</p> <ul style="list-style-type: none"> public washrooms potable water a place to lock up bicycles A board that advertises local businesses and events. Dog poop bags, and a place to dispose of them. A wifi hotspot and charging station Maps Vending machine
2017-11-29-018	5	[X]	[X]	[X]	[X]			[X]	<p>ATVing!!!!</p>

		1. How do you use the K&P Trail?							2. Please share your ideas for the Verona Trailhead
Reference Number	# of uses	Walking / Hiking	ATV	Cycling	Snow mobile	Dog Walking	Other	Horseback	
		145	136	124	80	69	23	15	
2017-11-29-019	2		[X]		[X]				
2017-11-29-020	6	[X]	[X]	[X]	[X]	[X]	[X]		Would love to see the gates opened for atvs. I live beside the trail on sand rd in Verona and I watch so many atvs get on the trail heading south off sand road only to watch them come back because the gates closed. Then they have to take 38 highway which seems silly with the trail right there but they can't use it.
2017-11-29-021	2	[X]		[X]					I'm not sure if there's enough space for washrooms on trail, but I think a bench here or there, where there's a bit more room, would be nice. Not sure you would find space for more than one or two, though. The path is pretty narrow everywhere. Some signage would be nice, though, and depending on the art, I think it could make the trail even nicer.
2017-11-29-022	5	[X]	[X]	[X]	[X]			[X]	Washrooms
2017-11-29-023	3	[X]		[X]			[X]		All the amenities named above sound excellent. Depending on funding, I would give parking and garbage the priority. (The 'other' activity is cross-country skiing.)

		1. How do you use the K&P Trail?							2. Please share your ideas for the Verona Trailhead
Reference Number	# of uses	Walking / Hiking	ATV	Cycling	Snow mobile	Dog Walking	Other	Horseback	
		145	136	124	80	69	23	15	
2017-11-29-024	3	[X]		[X]		[X]			<p>We are excited to see the Verona signage moved to the Trailhead. As well, garbage pails and benches are essential! Small covered shelter for those rainy day walks/hikes, and to provide shade in the hot summer months.</p> <p>I know that it might not be cost effective, but is there a way to put in a composting toilet? It would be ideal for hikers and the like, but wondering if it would be 'abused'? Maybe lock it after hours.</p> <p>I would think that a hitching post would be a great idea, and bike racks. Parking curbs, to allow for proper parking. NO commercial parking signs.</p> <p>We have some great artists in the area. Some local art work, and/or sculptures would make it look appealing. As well, greenery, in the forms of planted trees and flower bins.</p> <p>Maybe one or two picnic benches, chained down of course.</p> <p>I know that when hiking in Frontenac, we leave our natural walking 'sticks' for the next person. Maybe construct a proper bin to put them in. That would be a nice, personal touch.</p> <p>A distance/destination route sign.</p>
2017-11-29-025	5	[X]	[X]	[X]	[X]	[X]			
2017-11-29-026	2	[X]		[X]					
2017-11-29-028	1				[X]				Make it wider so 2 sleds can easily get by each other.
2017-11-29-029	2		[X]		[X]				
2017-11-29-030	2	[X]		[X]					Should have some benches along the trail, also maybe have garbage cans at trail entrance so garbage is not left on the trail.
2017-11-29-031	4		[X]		[X]	[X]	[X]		Parking, loading & unloading safely of the side of the road. Because of my busy schedule, I often use the trail system in the evenings and at night. Some times I may be riding my 4 wheeler, sometimes my snowmobile. I even walk my dog at night. It would be safer to have a parking lot for these things. It does not need to be lite just need somewhere to park and load & unload safely.
2017-11-29-032	2		[X]		[X]				

		1. How do you use the K&P Trail?							2. Please share your ideas for the Verona Trailhead
Reference Number	# of uses	Walking / Hiking	ATV	Cycling	Snow mobile	Dog Walking	Other	Horseback	
		145	136	124	80	69	23	15	
2017-11-29-033	4	[X]		[X]		[X]	[X]		Would like see inviting entrance, local history and interesting site signage, bike racks installed, Interpretive information, history of K&P rail and trail info, along with maps of the K&P trail and other connecting trails and intersections and directional info i.e Community Centre 3kms north etc.
2017-11-29-034	2		[X]		[X]				It should have a couple port-potties. Some kind of rest stop idea. Maybe a simple shelter to warm up a bit.
2017-11-29-035	3	[X]		[X]		[X]			The entire K&P trail should remain accessible only to non-motorized users.
2017-11-29-036	2	[X]		[X]					
2017-11-29-037	4	[X]	[X]	[X]	[X]				Lots of parking Washroom facilities Information panels re other facilities up & down the Trail
2017-11-29-038	3	[X]		[X]		[X]			Like all these suggestions but fencing ? Is that necessary ? parking benches garbage receptacles washrooms public art signage fencing Perhaps small shelter ; water source . AGAINST ATV and motorized off-road vehicles through village !

		1. How do you use the K&P Trail?							2. Please share your ideas for the Verona Trailhead
Reference Number	# of uses	Walking / Hiking	ATV	Cycling	Snow mobile	Dog Walking	Other	Horseback	
		145	136	124	80	69	23	15	
2017-11-29-039	3	[X]		[X]		[X]			<p>The beauty of the trail is it's simplicity. People from the community are enjoying the use of the trails and I would not want to restrict usage by local people. I hope that those people in Verona who use the trail from Bellrock to Craig Rd will provide their feedback and that their voices will be heard as they may understand the pros/cons of off-road vehicle traffic better than anyone. I do not use this section on a daily basis and therefore am neutral on this point.</p> <p>As a long time avid cyclist I know that visiting cyclists generally contribute very little to the local economy. We tend to bring our own food and water and we take our own garbage home with us. We do not buy things. The point is to be out on the trail. The main purpose of trails should be for the benefit of the local community and because the local community tax dollars are supporting the trail, the County has a duty to local taxpayers to minimize trail costs. Some signage and parking is necessary to minimize any inconvenience to those property owners near the trail and for safety purposes. As well, fencing may be necessary to protect properties of those abutting trails. Washrooms & garbage receptacles are long term financial commitments. Not necessary for locals. If you brought the garbage in, you can take it out. I have never seen an issue with garbage along trails when there are no garbage containers. Visitors may seek out washrooms in local stores/restaurants which would increase the probability of a purchase. I have no objection to an art installation as long as there is no cost. This would be a good opportunity for an artist to showcase their work. If vandalism becomes an issue then art installations should be reconsidered because of the maintenance requirements. I have never had the need to sit down at a trail head so I'm not certain that benches are needed at this location. There again less to maintain. Thank you for providing this opportunity. In the case of the trail, truly - less is more.</p>
2017-11-29-040	1				[X]				
2017-11-30-001	3				[X]		[X]	[X]	Should be opened for four wheelers too
2017-11-30-004	1		[X]						
2017-11-30-005	2	[X]	[X]						

		1. How do you use the K&P Trail?							2. Please share your ideas for the Verona Trailhead
Reference Number	# of uses	Walking / Hiking	ATV	Cycling	Snow mobile	Dog Walking	Other	Horseback	
		145	136	124	80	69	23	15	
2017-11-30-006	2	[X]		[X]					parking, signage (trail and area maps, local history and information), picnic tables and/or benches, garbage receptacles and washrooms
2017-11-30-007	1	[X]							Test
2017-11-30-008	4	[X]	[X]		[X]	[X]			I would like to see the trail become more ATV friendly through Verona over to Sydenham. As of right now the only access you have is from Westport Road North, it would be nice to be able to go South as well with no Gates.
2017-12-01-001	3	[X]	[X]		[X]				
2017-12-01-002	2	[X]		[X]					

Richard Allen

From: [REDACTED]
Sent: March 1, 2017 4:24 PM
To: Richard Allen
Subject: Verona Trail Head Road 38

Hi Richard,

Update on the VCA plan to improve the Verona Trail Head on Road 38. The VCA will be applying for a community grant for the purchase of a Canadian pole and flag (cost approx \$1,900.00). The Verona Lions Club will be applying for a community grant for a garbage container (cost Approx \$1,500.00). This will go along with the two benches and the kiosk on the trail head site. If the community grants get approved, the projects can start any time late Spring or when the site is ready. The VCA also raised funds in the amount of \$1,100.00 to help improve the site.

The VCA have a regular monthly meeting scheduled for Wednesday March 8th 7:00 PM at MOM's Restaurant Verona (back room). Hope you can attend.

Wayne Conway President VCA

Origin:
<http://www.frontenacounty.ca/en/contacts/search.aspx?s=PI500vTWr7SIQLzOPIUscm1hQeQuAleQuAI>

This email was sent to you by [REDACTED] through <http://www.frontenacounty.ca/>.

Hello Alison.

I am proposing a “Gateway to the Trail” sculpture for the Verona Trailhead to make this a standout and visually welcoming entrance to the K&P Trail. I am interested in working with Frontenac County to help develop this valuable asset.

I have some design ideas but would like to suggest a collaborative community approach. I am suggesting a small group, say three people, that could host two workshops to get input by inviting the community. I would offer my studio space for one of these sessions and maybe we could hold another one in Sharbot Lake.

I used this approach two years ago with the Sydenham Street popup park in Kingston, where a unique bench was collaboratively designed, which was then created and installed by my team and myself (as described below).

Concept

I have 3 concepts for the “Gateway to the Trail”:

- A real gate. This would have openings on both sides for walkers and cyclists to enter/exit and would open when unlocked just like other trail gates.
- An open thruway. 1 vertical element each on either side of the opening, so visitors would enter the trail between them.
- An archway. 2 vertical elements that are connected with each other over the width of the entrance.

Every concept has the ability to integrate different designs ideas from the community, as well as the County of Frontenac logo.

Example for community oriented project: Sydenham Street

For this project, community members were invited to be part of the design process for a piece of public art that was temporarily placed on Sydenham Street in downtown Kingston over a 2 week period. There was a preliminary meeting in Kingston with community members who showed interest in the project. We determined keywords and important aspects that were unique to the project as a temporary pop art venue and we established a needs-purpose sheet in regards to the final piece.

This was followed by 2 meetings at my shop, where we talked about optional material and shapes, and we as well discussed the overall design. A last meeting was used to fine tune the work in a work-in-progress stage.

Budget

In regards to budget/ cost, I am willing to work together with Frontenac County to make this happen.

I am offering my knowledge and artistic skills and experience to create a literal gateway piece that would be a landmark for this area. Community members could as well identify with the piece as it represents this part of Canada that they live in and are proud of. Using me as a local artist would enhance this experience.