

**TOWNSHIP OF SOUTH FRONTENAC
COMMITTEE OF ADJUSTMENT MEETING
AGENDA**

***Online via Teleconference and Broadcast line to the
South Frontenac's Facebook Page***

<http://www.facebook.com/SouthFrontenacTwp/>

TIME: 5:00 PM,
DATE: Thursday, May 28, 2020
PLACE: Council Chambers/Electronic
Participation.

1. PowerPoint Presentation
 - a) 2 - 24
2. Call to Order
 - a)
3. Adoption of Agenda
 - a)
4. Declaration of pecuniary interest
5. Approval of Minutes – March 12, 2020
 - a)
6. Appointments
 - a) Appointment of Christine Woods, Senior Planner, as a Deputy Secretary-Treasurer to the Committee of Adjustment.
 - b) Appointment of Anna Geladi, Planner, as a Deputy Secretary-Treasurer to the Committee of Adjustment.
7. Other Business
 - a) Information presentation with respect to Provincial Policy Statement, 2020. 25 - 81
 - b) Information presentation with respect to South Frontenac Council's decision to delegate the authority for undisputed consents to staff. 82 - 88
8. Adjournment
 - a)

Township of South Frontenac Committee of Adjustment Meeting

Thursday, May 28, 2020
5:00 p.m. Virtual Zoom Meeting



Agenda

- Call to Order
- Adoption of Agenda
- Declaration of Pecuniary Interests
- Approval of Minutes of previous meeting – March 12, 2020
- Appointments
- Other Business
- Adjournment



Township of South Frontenac Committee of Adjustment Meeting



Appointment of Christine Woods, Senior Planner as Deputy Secretary-Treasurer

Appointment of Anna Geladi, Planner as Deputy Secretary-Treasurer



Provincial Policy Statement, 2020

Presentation to South Frontenac Committee of Adjustment

May 28, 2020





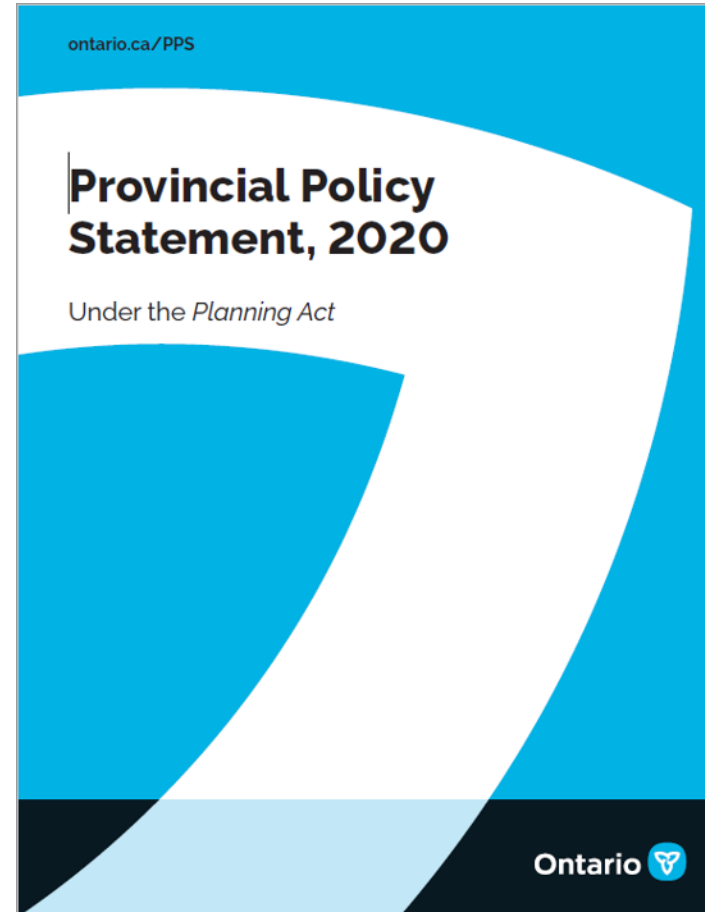
Outline

1. Background
2. Purpose of Provincial Policy Statement
3. Main policy sections
4. Council response to Province: October 2019
5. Themes for changes to 2020 PPS
6. Impacts to Township by theme
7. Questions & Comments



Background

- Issued under section 3 of the Planning Act
- Replaces the 2014 Provincial Policy Statement (PPS)
- Came into effect May 1, 2020
- All decisions affecting planning matters “shall be consistent” with PPS 2020





Purpose of Provincial Policy Statement

- Provides policy direction on matters of provincial interest related to land use planning and development
- Matters of provincial interest impact Ontario's long-term prosperity, environmental health and social well-being
- Intend to provide for appropriate development while protecting resources of provincial interest, public health and safety, and the quality of the natural and built environment
- Establishes a policy framework for County and local official plan policies



Main Policy Sections

1. Building strong healthy communities
2. Wise use and management of resources
3. Protecting public health and safety
4. Implementation and interpretation

Council Response to Province: October 2019



- Proposed changes to the PPS that Council supported
 - Keep the existing natural heritage policies
 - A higher level of environmental protection
 - Continue to require that all planning approvals “shall be consistent” with the PPS
 - Provide more flexibility for rural communities
 - Sustain and protect agricultural resources
 - Opportunity for more housing options
 - Facilitate the use of communal services in villages and hamlets

Council Response to Province: October 2019



- Recommended and Requested Changes
 - Maintain the 20 year planning horizon
 - Maintain 10 year housing land supply
 - Clarify the term “limited” rural residential development
 - Clarify the term “recreational dwellings”
 - Clarify the term “market-based” housing
 - Clarify how mineral aggregate extraction in natural heritage features can demonstrate no negative impact through rehabilitation plans
 - Provide clarification and guidance materials



Themes for Changes to 2020 PPS

1. Increase housing supply and mix
2. Protect the environment and public safety
3. Reduce barriers and costs
4. Support rural, northern and Indigenous communities
5. Support certainty and economic growth



1. Increasing Housing Supply and Mix

- Long term planning time horizon increased from 20 years to 25 years
- Housing land supply increased from 10 years to 15 years
- Relaxes the process and considerations in expanding settlement areas
- More flexibility around phasing and form of development in settlement areas
- Provide for an appropriate range and mix of housing options
 - Meet market-based and affordable housing needs and changing demographic needs
 - Supports the role of market consideration in determining the range and mix of housing
 - Definition of housing includes second residential units and tiny homes
 - Aligns affordable housing targets with housing and homelessness plans



2. Protecting the Environment and Public Safety

- Prepare for regional and local impacts of a changing climate
 - Through effective storm water management and the use of green infrastructure
- Continue to protect natural features such as wetlands
- Continue to direct development away from hazardous areas



3. Reducing Barriers and Costs

- Cannot try to regulate the depth of extraction for new and existing mineral aggregate operations
 - This may only be done under the Aggregate Resources Act
- Strengthen cultural heritage policies
 - Direction provided on how to identify and conserve cultural heritage resources while allowing for compatible development
- Support for a broad range of energy types and opportunities for increased energy supply
 - e.g. renewable or alternative energy systems
- Required to engage with Indigenous communities
 - Coordinate on land use planning matters
 - Consider their interests when identifying, protecting and managing cultural heritage and archaeological resources



4. Supporting Rural, Northern and Indigenous Communities

- Permit locally-appropriate rural residential development
 - Including lot creation
- May allow private communal servicing for multi-unit/lot development
- May use an agricultural system approach
 - This considers both the agricultural land base and the agri-food network
- Assess long-term impacts of individual on-site sewage and water services on the health and character of rural settlement areas and the feasibility of moving to municipal or private communal servicing at the time of the Official Plan update
- Required to engage with Indigenous communities
 - Coordinate on land use planning matters



5. Supporting Certainty and Economic Growth

- Encouraged to facilitate conditions for economic investment
- Assess local employment areas to ensure designations are appropriate and provide a 25 year land supply
- Maintain long-term viability of employment areas by protecting them from sensitive land uses
- Integrate planning for infrastructure needs with growth management and land use planning



Implementation and Interpretation of PPS

- Province made commitment to support implementation through education, training and guidance materials (including engagement with Indigenous communities)
- The proposed policy about fast-tracking residential and priority applications was not included in the PPS.



Any questions or comments?

Christine Woods MCIP, RPP
Senior Planner

Anna Geladi
Planner

Township of South Frontenac Committee of Adjustment Meeting



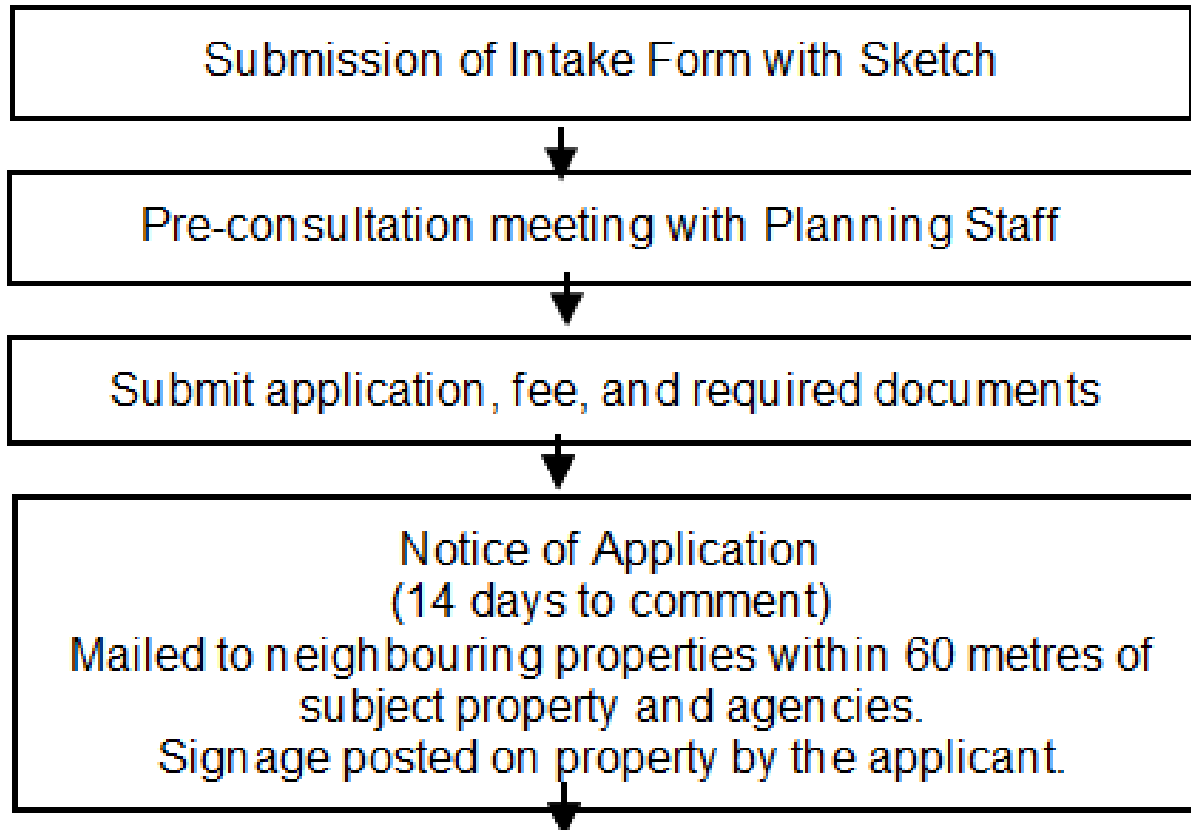
Presentation by the Director of Development Services, Claire Dodds with respect to Council's Decision to delegate the authority for undisputed consents to staff.

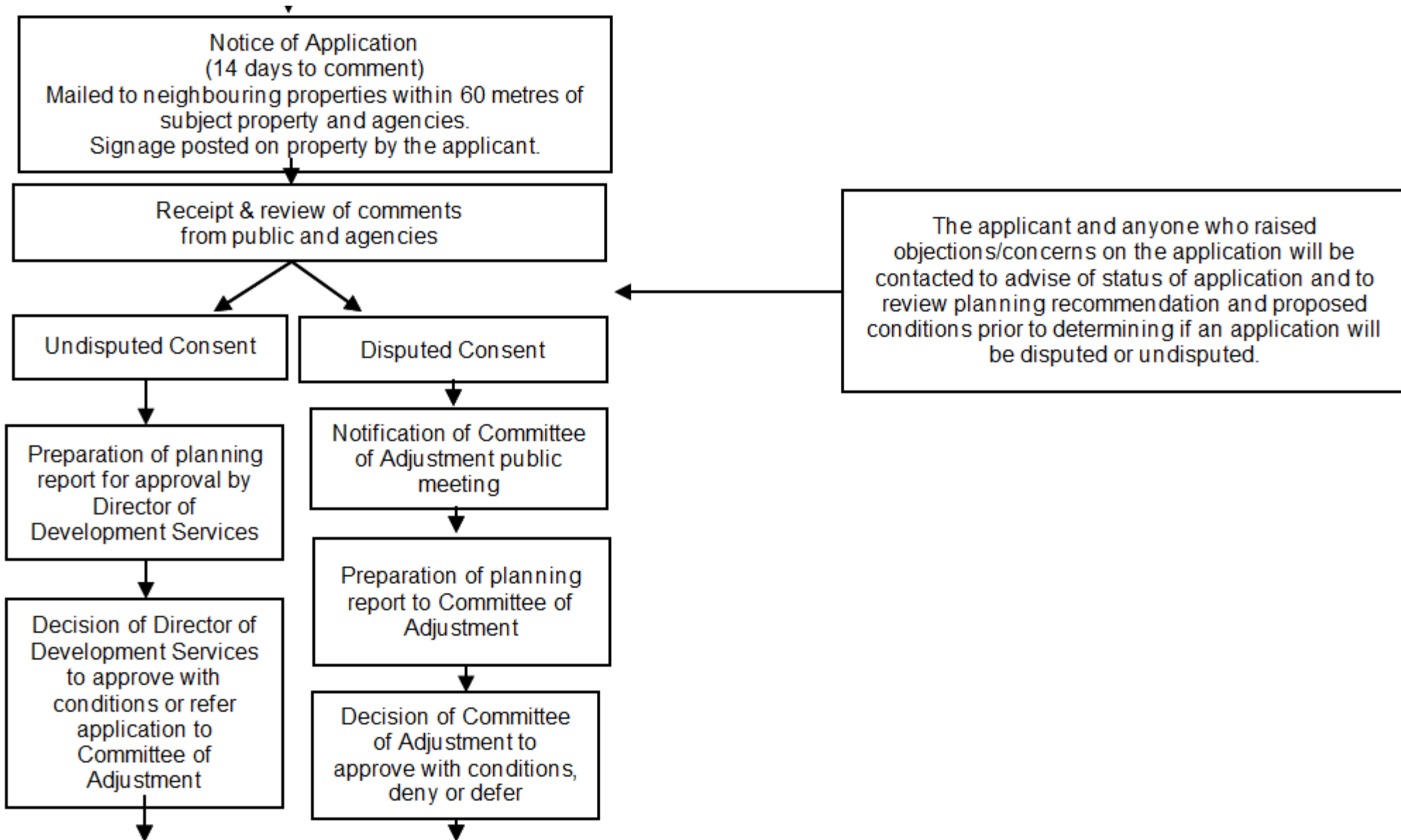


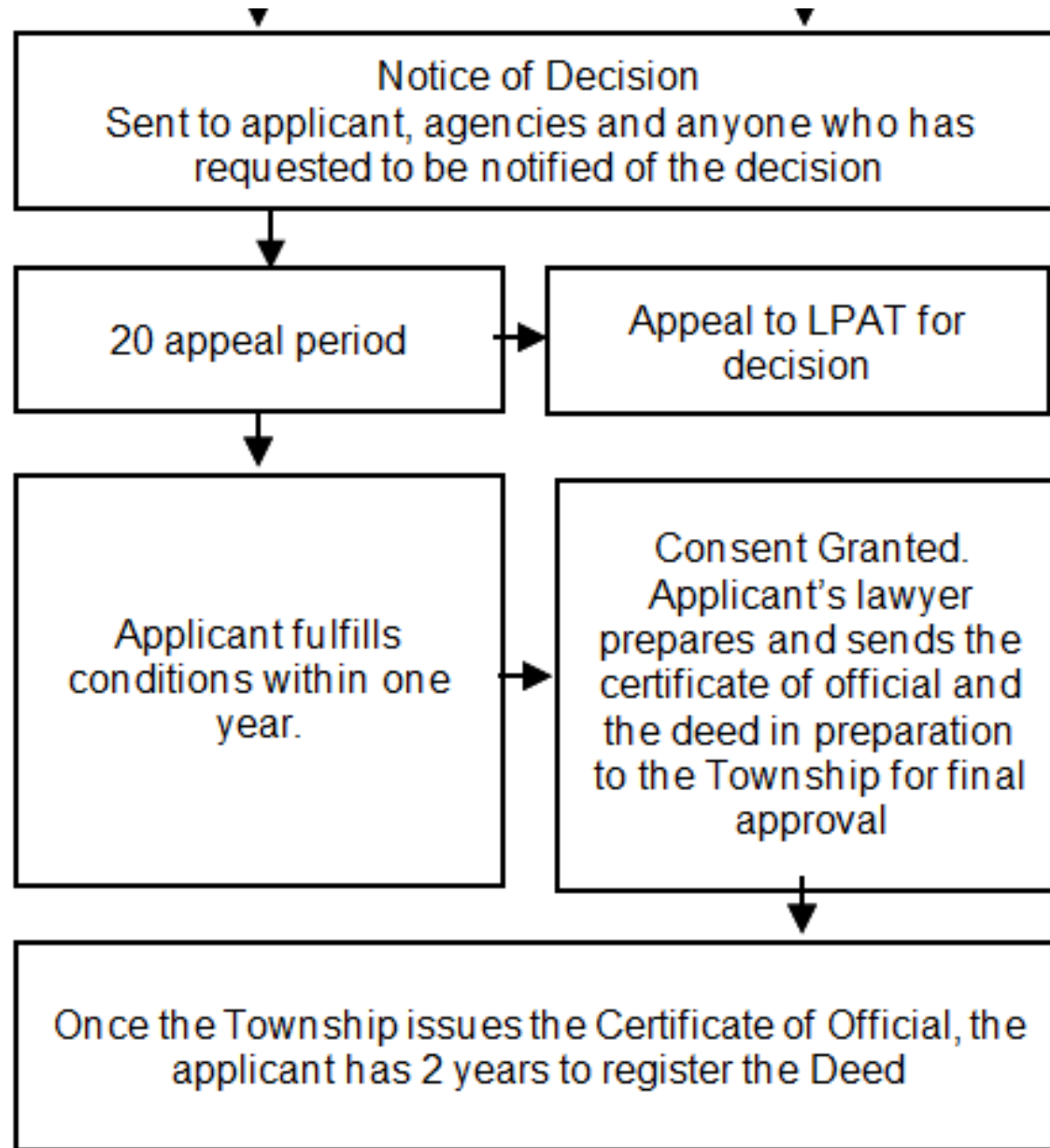
Township of South Frontenac Committee of Adjustment Meeting



Undisputed vs. Disputed Consent Process







Township of South Frontenac Committee of Adjustment Meeting



Conclusion / Adjournment



Provincial Policy Statement, 2020

Under the *Planning Act*

PROVINCIAL POLICY STATEMENT, 2020

Approved by the Lieutenant Governor in Council, Order in Council No. 229/2020

This Provincial Policy Statement was issued under section 3 of the *Planning Act* and came into effect May 1, 2020. It replaces the Provincial Policy Statement issued April 30, 2014.

Table of Contents

PART I:	PREAMBLE	1
PART II:	LEGISLATIVE AUTHORITY	2
PART III:	HOW TO READ THE PROVINCIAL POLICY STATEMENT	2
PART IV:	VISION FOR ONTARIO'S LAND USE PLANNING SYSTEM	5
PART V:	POLICIES	7
1.0	BUILDING STRONG HEALTHY COMMUNITIES	7
1.1	Managing and Directing Land Use to Achieve Efficient and Resilient Development and Land Use Patterns	7
	Settlement Areas	8
	Rural Areas in Municipalities	10
	Rural Lands in Municipalities	11
	Territory Without Municipal Organization	12
1.2	Coordination	12
	Land Use Compatibility	14
1.3	Employment	14
	Employment Areas	15
1.4	Housing	16
1.5	Public Spaces, Recreation, Parks, Trails and Open Space	17
1.6	Infrastructure and Public Service Facilities	17
	Sewage, Water and Stormwater	18
	Transportation Systems	20
	Transportation and Infrastructure Corridors	20
	Airports, Rail and Marine Facilities	21
	Waste Management	21
	Energy Supply	22
1.7	Long-Term Economic Prosperity	22
1.8	Energy Conservation, Air Quality and Climate Change	22
2.0	WISE USE AND MANAGEMENT OF RESOURCES	24
2.1	Natural Heritage	24
2.2	Water	25
2.3	Agriculture	26
2.4	Minerals and Petroleum	28
2.5	Mineral Aggregate Resources	29
2.6	Cultural Heritage and Archaeology	31
3.0	PROTECTING PUBLIC HEALTH AND SAFETY	32
3.1	Natural Hazards	32
3.2	Human-Made Hazards	34
4.0	IMPLEMENTATION AND INTERPRETATION	35
5.0	FIGURE 1	37
6.0	DEFINITIONS	40

Part I: Preamble

The Provincial Policy Statement provides policy direction on matters of provincial interest related to land use planning and development. As a key part of Ontario's policy-led planning system, the Provincial Policy Statement sets the policy foundation for regulating the development and use of land. It also supports the provincial goal to enhance the quality of life for all Ontarians.

The Provincial Policy Statement provides for appropriate development while protecting resources of provincial interest, public health and safety, and the quality of the natural and built environment. The Provincial Policy Statement supports improved land use planning and management, which contributes to a more effective and efficient land use planning system.

The policies of the Provincial Policy Statement may be complemented by provincial plans or by locally-generated policies regarding matters of municipal interest. Provincial plans and municipal official plans provide a framework for comprehensive, integrated, place-based and long-term planning that supports and integrates the principles of strong communities, a clean and healthy environment and economic growth, for the long term.

Municipal official plans are the most important vehicle for implementation of this Provincial Policy Statement and for achieving comprehensive, integrated and long-term planning. Official plans shall identify provincial interests and set out appropriate land use designations and policies.

Official plans should also coordinate cross-boundary matters to complement the actions of other planning authorities and promote mutually beneficial solutions. Official plans shall provide clear, reasonable and attainable policies to protect provincial interests and direct development to suitable areas. In order to protect provincial interests, planning authorities shall keep their official plans up-to-date with this Provincial Policy Statement.

Zoning and development permit by-laws are also important for implementation of this Provincial Policy Statement. Planning authorities shall keep their zoning and development permit by-laws up-to-date with their official plans and this Provincial Policy Statement.

Land use planning is only one of the tools for implementing provincial interests. A wide range of legislation, regulations, policies and programs may apply to decisions with respect to *Planning Act* applications and affect planning matters, and assist in implementing these interests.

Within the Great Lakes – St. Lawrence River Basin, there may be circumstances where planning authorities should consider agreements related to the protection or restoration of the Great Lakes – St. Lawrence River Basin. Examples of these agreements include Great Lakes agreements between Ontario and Canada, between Ontario and Quebec and the Great Lakes States of the United States of America, and between Canada and the United States of America.

Part II: Legislative Authority

The Provincial Policy Statement is issued under the authority of section 3 of the *Planning Act* and came into effect on May 1, 2020.

In respect of the exercise of any authority that affects a planning matter, section 3 of the *Planning Act* requires that decisions affecting planning matters “shall be consistent with” policy statements issued under the Act.

Comments, submissions or advice that affect a planning matter that are provided by the council of a municipality, a local board, a planning board, a minister or ministry, board, commission or agency of the government “shall be consistent with” this Provincial Policy Statement.

Part III: How to Read the Provincial Policy Statement

The provincial policy-led planning system recognizes and addresses the complex inter-relationships among environmental, economic and social factors in land use planning. The Provincial Policy Statement supports a comprehensive, integrated and long-term approach to planning, and recognizes linkages among policy areas.

Read the Entire Provincial Policy Statement

The Provincial Policy Statement is more than a set of individual policies. It is to be read in its entirety and the relevant policies are to be applied to each situation. When more than one policy is relevant, a decision-maker should consider all of the relevant policies to understand how they work together. The language of each policy, including the Implementation and Interpretation policies, will assist decision-makers in understanding how the policies are to be implemented.

While specific policies sometimes refer to other policies for ease of use, these cross-references do not take away from the need to read the Provincial Policy Statement as a whole.

There is no implied priority in the order in which the policies appear.

Consider Specific Policy Language

When applying the Provincial Policy Statement it is important to consider the specific language of the policies. Each policy provides direction on how it is to be implemented, how it is situated within the broader Provincial Policy Statement, and how it relates to other policies.

Some policies set out positive directives, such as “settlement areas shall be the focus of growth and development.” Other policies set out limitations and prohibitions, such as “development and site alteration shall not be permitted.” Other policies use enabling or supportive language, such as “should,” “promote” and “encourage.”

The choice of language is intended to distinguish between the types of policies and the nature of implementation. There is some discretion when applying a policy with enabling or supportive language in contrast to a policy with a directive, limitation or prohibition.

Geographic Scale of Policies

The Provincial Policy Statement recognizes the diversity of Ontario and that local context is important. Policies are outcome-oriented, and some policies provide flexibility in their implementation provided that provincial interests are upheld.

While the Provincial Policy Statement is to be read as a whole, not all policies will be applicable to every site, feature or area. The Provincial Policy Statement applies at a range of geographic scales.

Some of the policies refer to specific areas or features and can only be applied where these features or areas exist. Other policies refer to planning objectives that need to be considered in the context of the municipality or planning area as a whole, and are not necessarily applicable to a specific site or development proposal.

Policies Represent Minimum Standards

The policies of the Provincial Policy Statement represent minimum standards.

Within the framework of the provincial policy-led planning system, planning authorities and decision-makers may go beyond these minimum standards to address matters of importance to a specific community, unless doing so would conflict with any policy of the Provincial Policy Statement.

Defined Terms and Meanings

Except for references to legislation which are italicized, other italicized terms in the Provincial Policy Statement are defined in the Definitions section. For non-italicized terms, the normal meaning of the word applies. Terms may be italicized only in specific policies; for these terms, the defined meaning applies where they are italicized and the normal meaning applies where they are not italicized. Defined terms in the Definitions section are intended to capture both singular and plural forms of these terms in the policies.

Guidance Material

Guidance material and technical criteria may be issued from time to time to assist planning authorities and decision-makers with implementing the policies of the Provincial Policy Statement. Information, technical criteria and approaches outlined in guidance material are meant to support but not add to or detract from the policies of the Provincial Policy Statement.

Relationship with Provincial Plans

The Provincial Policy Statement provides overall policy directions on matters of provincial interest related to land use planning and development in Ontario, and applies province-wide, except where this policy statement or another provincial plan provides otherwise.

Provincial plans, such as the Greenbelt Plan, A Place to Grow: Growth Plan for the Greater Golden Horseshoe and the Growth Plan for Northern Ontario, build upon the policy foundation provided by the Provincial Policy Statement. They provide additional land use planning policies to address issues facing specific geographic areas in Ontario.

Provincial plans are to be read in conjunction with the Provincial Policy Statement. They take precedence over the policies of the Provincial Policy Statement to the extent of any conflict, except where the relevant legislation provides otherwise.

Where the policies of provincial plans address the same, similar, related, or overlapping matters as the policies of the Provincial Policy Statement, applying the more specific policies of the provincial plan satisfies the more general requirements of the Provincial Policy Statement. In contrast, where matters addressed in the Provincial Policy Statement do not overlap with policies in provincial plans, the policies in the Provincial Policy Statement must be independently satisfied.

Land use planning decisions made by municipalities, planning boards, the Province, or a commission or agency of the government must be consistent with the Provincial Policy Statement. Where provincial plans are in effect, planning decisions must conform or not conflict with them, as the case may be.

Part IV: Vision for Ontario's Land Use Planning System

The long-term prosperity and social well-being of Ontario depends upon planning for strong, sustainable and resilient communities for people of all ages, a clean and healthy environment, and a strong and competitive economy.

Ontario is a vast province with diverse urban, rural and northern communities which may face different challenges related to diversity in population, economic activity, pace of growth and physical and natural conditions. Some areas face challenges related to maintaining population and diversifying their economy, while other areas face challenges related to accommodating and managing the development and population growth which is occurring, while protecting important resources and the quality of the natural environment.

The Province's rich cultural diversity is one of its distinctive and defining features. Indigenous communities have a unique relationship with the land and its resources, which continues to shape the history and economy of the Province today. Ontario recognizes the unique role Indigenous communities have in land use planning and development, and the contribution of Indigenous communities' perspectives and traditional knowledge to land use planning decisions. The Province recognizes the importance of consulting with Aboriginal communities on planning matters that may affect their section 35 Aboriginal or treaty rights. Planning authorities are encouraged to build constructive, cooperative relationships through meaningful engagement with Indigenous communities to facilitate knowledge-sharing in land use planning processes and inform decision-making.

The Provincial Policy Statement focuses growth and development within urban and rural settlement areas while supporting the viability of rural areas. It recognizes that the wise management of land use change may involve directing, promoting or sustaining development. Land use must be carefully managed to accommodate appropriate development to meet the full range of current and future needs, while achieving efficient development patterns and avoiding significant or sensitive resources and areas which may pose a risk to public health and safety. Planning authorities are encouraged to permit and facilitate a range of housing options, including new development as well as residential intensification, to respond to current and future needs.

Efficient development patterns optimize the use of land, resources and public investment in infrastructure and public service facilities. These land use patterns promote a mix of housing, including affordable housing, employment, recreation, parks and open spaces, and transportation choices that increase the use of active transportation and transit before other modes of travel. They support the financial well-being of the Province and municipalities over the long term, and minimize the undesirable effects of development, including impacts on air, water and other resources. They also permit better adaptation and response to the impacts of a changing climate, which will vary from region to region.

Strong, liveable and healthy communities promote and enhance human health and social well-being, are economically and environmentally sound, and are resilient to climate change.

The Province's natural heritage resources, water resources, including the Great Lakes, agricultural resources, mineral resources, and cultural heritage and archaeological resources provide important environmental, economic and social benefits. The wise use and management of these resources over the long term is a key provincial interest. The Province must ensure that its resources are managed in a sustainable way to conserve biodiversity, protect essential ecological processes and public health and safety, provide for the production of food and fibre, minimize environmental and social impacts, provide for recreational opportunities (e.g. fishing, hunting and hiking) and meet its long-term needs.

It is equally important to protect the overall health and safety of the population, including preparing for the impacts of a changing climate. The Provincial Policy Statement directs development away from areas of natural and human-made hazards. This preventative approach supports provincial and municipal financial well-being over the long term, protects public health and safety, and minimizes cost, risk and social disruption.

Taking action to conserve land and resources avoids the need for costly remedial measures to correct problems and supports economic and environmental principles.

Strong communities, a clean and healthy environment and a strong economy are inextricably linked. Long-term prosperity, human and environmental health and social well-being should take precedence over short-term considerations.

The fundamental principles set out in the Provincial Policy Statement apply throughout Ontario. To support our collective well-being, now and in the future, all land use must be well managed.

Part V: Policies

1.0 Building Strong Healthy Communities

Ontario is a vast province with urban, rural, and northern communities with diversity in population, economic activities, pace of growth, service levels and physical and natural conditions. Ontario's long-term prosperity, environmental health and social well-being depend on wisely managing change and promoting efficient land use and development patterns. Efficient land use and development patterns support sustainability by promoting strong, liveable, healthy and resilient communities, protecting the environment and public health and safety, and facilitating economic growth.

Accordingly:

1.1 Managing and Directing Land Use to Achieve Efficient and Resilient Development and Land Use Patterns

1.1.1 Healthy, liveable and safe communities are sustained by:

- a) promoting efficient development and land use patterns which sustain the financial well-being of the Province and municipalities over the long term;
- b) accommodating an appropriate affordable and market-based range and mix of residential types (including single-detached, additional residential units, multi-unit housing, affordable housing and housing for older persons), employment (including industrial and commercial), institutional (including places of worship, cemeteries and long-term care homes), recreation, park and open space, and other uses to meet long-term needs;
- c) avoiding development and land use patterns which may cause environmental or public health and safety concerns;
- d) avoiding development and land use patterns that would prevent the efficient expansion of *settlement areas* in those areas which are adjacent or close to *settlement areas*;
- e) promoting the integration of land use planning, growth management, *transit-supportive* development, *intensification* and *infrastructure* planning to achieve cost-effective development patterns, optimization of transit investments, and standards to minimize land consumption and servicing costs;
- f) improving accessibility for persons with disabilities and older persons by addressing land use barriers which restrict their full participation in society;
- g) ensuring that necessary *infrastructure* and *public service facilities* are or will be available to meet current and projected needs;
- h) promoting development and land use patterns that conserve biodiversity; and
- i) preparing for the regional and local impacts of a changing climate.

1.1.2 Sufficient land shall be made available to accommodate an appropriate range and mix of land uses to meet projected needs for a time horizon of up to 25 years, informed by provincial guidelines. However, where an alternate time period has been established for specific areas of the Province as a result of a provincial planning exercise or a *provincial plan*, that time frame may be used for municipalities within the area.

Within *settlement areas*, sufficient land shall be made available through *intensification* and *redevelopment* and, if necessary, *designated growth areas*.

Nothing in policy 1.1.2 limits the planning for *infrastructure*, *public service facilities* and *employment areas* beyond a 25-year time horizon.

1.1.3 Settlement Areas

Settlement areas are urban areas and rural settlement areas, and include cities, towns, villages and hamlets. Ontario's settlement areas vary significantly in terms of size, density, population, economic activity, diversity and intensity of land uses, service levels, and types of infrastructure available.

The vitality and regeneration of settlement areas is critical to the long-term economic prosperity of our communities. Development pressures and land use change will vary across Ontario. It is in the interest of all communities to use land and resources wisely, to promote efficient development patterns, protect resources, promote green spaces, ensure effective use of infrastructure and public service facilities and minimize unnecessary public expenditures.

1.1.3.1 *Settlement areas* shall be the focus of growth and development.

1.1.3.2 Land use patterns within *settlement areas* shall be based on densities and a mix of land uses which:

- a) efficiently use land and resources;
- b) are appropriate for, and efficiently use, the *infrastructure* and *public service facilities* which are planned or available, and avoid the need for their unjustified and/or uneconomical expansion;
- c) minimize negative impacts to air quality and climate change, and promote energy efficiency;
- d) prepare for the *impacts of a changing climate*;
- e) support *active transportation*;
- f) are *transit-supportive*, where transit is planned, exists or may be developed; and
- g) are *freight-supportive*.

Land use patterns within *settlement areas* shall also be based on a range of uses and opportunities for *intensification* and *redevelopment* in accordance with the criteria in policy 1.1.3.3, where this can be accommodated.

- 1.1.3.3 Planning authorities shall identify appropriate locations and promote opportunities for *transit-supportive* development, accommodating a significant supply and range of *housing options* through *intensification* and *redevelopment* where this can be accommodated taking into account existing building stock or areas, including *brownfield sites*, and the availability of suitable existing or planned *infrastructure* and *public service facilities* required to accommodate projected needs.
- 1.1.3.4 Appropriate development standards should be promoted which facilitate *intensification*, *redevelopment* and compact form, while avoiding or mitigating risks to public health and safety.
- 1.1.3.5 Planning authorities shall establish and implement minimum targets for *intensification* and *redevelopment* within built-up areas, based on local conditions. However, where provincial targets are established through *provincial plans*, the provincial target shall represent the minimum target for affected areas.
- 1.1.3.6 New development taking place in *designated growth areas* should occur adjacent to the existing built-up area and should have a compact form, mix of uses and densities that allow for the efficient use of land, *infrastructure* and *public service facilities*.
- 1.1.3.7 Planning authorities should establish and implement phasing policies to ensure:
- a) that specified targets for *intensification* and *redevelopment* are achieved prior to, or concurrent with, new development within *designated growth areas*; and
 - b) the orderly progression of development within *designated growth areas* and the timely provision of the *infrastructure* and *public service facilities* required to meet current and projected needs.
- 1.1.3.8 A planning authority may identify a *settlement area* or allow the expansion of a *settlement area* boundary only at the time of a *comprehensive review* and only where it has been demonstrated that:
- a) sufficient opportunities to accommodate growth and to satisfy market demand are not available through *intensification*, *redevelopment* and *designated growth areas* to accommodate the projected needs over the identified planning horizon;
 - b) the *infrastructure* and *public service facilities* which are planned or available are suitable for the development over the long term, are financially viable over their life cycle, and protect public health and safety and the natural environment;
 - c) in *prime agricultural areas*:
 - 1. the lands do not comprise *specialty crop areas*;
 - 2. alternative locations have been evaluated, and

- i. there are no reasonable alternatives which avoid *prime agricultural areas*; and
 - ii. there are no reasonable alternatives on lower priority agricultural lands in *prime agricultural areas*;
- d) the new or expanding *settlement area* is in compliance with the *minimum distance separation formulae*; and
- e) impacts from new or expanding *settlement areas* on agricultural operations which are adjacent or close to the *settlement area* are mitigated to the extent feasible.

In undertaking a *comprehensive review*, the level of detail of the assessment should correspond with the complexity and scale of the settlement boundary expansion or development proposal.

1.1.3.9 Notwithstanding policy 1.1.3.8, municipalities may permit adjustments of *settlement area* boundaries outside a *comprehensive review* provided:

- a) there would be no net increase in land within the *settlement areas*;
- b) the adjustment would support the municipality's ability to meet *intensification* and *redevelopment* targets established by the municipality;
- c) *prime agricultural areas* are addressed in accordance with 1.1.3.8 (c), (d) and (e); and
- d) the *settlement area* to which lands would be added is appropriately serviced and there is sufficient reserve *infrastructure* capacity to service the lands.

1.1.4 Rural Areas in Municipalities

Rural areas are important to the economic success of the Province and our quality of life. Rural areas are a system of lands that may include rural settlement areas, rural lands, prime agricultural areas, natural heritage features and areas, and other resource areas. Rural areas and urban areas are interdependent in terms of markets, resources and amenities. It is important to leverage rural assets and amenities and protect the environment as a foundation for a sustainable economy.

Ontario's rural areas have diverse population levels, natural resources, geographies and physical characteristics, and economies. Across rural Ontario, local circumstances vary by region. For example, northern Ontario's natural environment and vast geography offer different opportunities than the predominately agricultural areas of southern regions of the Province.

1.1.4.1 Healthy, integrated and viable *rural areas* should be supported by:

- a) building upon rural character, and leveraging rural amenities and assets;
- b) promoting regeneration, including the redevelopment of *brownfield sites*;
- c) accommodating an appropriate range and mix of housing in rural *settlement areas*;
- d) encouraging the conservation and *redevelopment* of existing rural housing stock on *rural lands*;
- e) using rural *infrastructure* and *public service facilities* efficiently;

- f) promoting diversification of the economic base and employment opportunities through goods and services, including value-added products and the sustainable management or use of resources;
 - g) providing opportunities for sustainable and diversified tourism, including leveraging historical, cultural, and natural assets;
 - h) conserving biodiversity and considering the ecological benefits provided by nature; and
 - i) providing opportunities for economic activities in *prime agricultural areas*, in accordance with policy 2.3.
- 1.1.4.2 In *rural areas*, *rural settlement areas* shall be the focus of growth and development and their vitality and regeneration shall be promoted.
- 1.1.4.3 When directing development in *rural settlement areas* in accordance with policy 1.1.3, planning authorities shall give consideration to rural characteristics, the scale of development and the provision of appropriate service levels.
- 1.1.4.4 Growth and development may be directed to *rural lands* in accordance with policy 1.1.5, including where a municipality does not have a *settlement area*.

1.1.5 Rural Lands in Municipalities

- 1.1.5.1 When directing development on *rural lands*, a planning authority shall apply the relevant policies of Section 1: Building Strong Healthy Communities, as well as the policies of Section 2: Wise Use and Management of Resources and Section 3: Protecting Public Health and Safety.
- 1.1.5.2 On *rural lands* located in municipalities, permitted uses are:
- a) the management or use of resources;
 - b) resource-based recreational uses (including recreational dwellings);
 - c) residential development, including lot creation, that is locally appropriate;
 - d) *agricultural uses, agriculture-related uses, on-farm diversified uses and normal farm practices*, in accordance with provincial standards;
 - e) home occupations and home industries;
 - f) cemeteries; and
 - g) other rural land uses.
- 1.1.5.3 Recreational, tourism and other economic opportunities should be promoted.
- 1.1.5.4 Development that is compatible with the rural landscape and can be sustained by rural service levels should be promoted.
- 1.1.5.5 Development shall be appropriate to the *infrastructure* which is planned or available, and avoid the need for the unjustified and/or uneconomical expansion of this *infrastructure*.

- 1.1.5.6 Opportunities should be retained to locate new or expanding land uses that require separation from other uses.
- 1.1.5.7 Opportunities to support a diversified rural economy should be promoted by protecting agricultural and other resource-related uses and directing non-related development to areas where it will minimize constraints on these uses.
- 1.1.5.8 New land uses, including the creation of lots, and new or expanding livestock facilities, shall comply with the *minimum distance separation formulae*.

1.1.6 Territory Without Municipal Organization

- 1.1.6.1 On *rural lands* located in territory without municipal organization, the focus of development activity shall be related to the sustainable management or use of resources and resource-based recreational uses (including recreational dwellings).
- 1.1.6.2 Development shall be appropriate to the *infrastructure* which is planned or available, and avoid the need for the unjustified and/or uneconomical expansion of this *infrastructure*.
- 1.1.6.3 The establishment of new permanent townships shall not be permitted.
- 1.1.6.4 In areas adjacent to and surrounding municipalities, only development that is related to the sustainable management or use of resources and resource-based recreational uses (including recreational dwellings) shall be permitted. Other uses may only be permitted if:
 - a) the area forms part of a planning area;
 - b) the necessary *infrastructure* and *public service facilities* are planned or available to support the development and are financially viable over their life cycle; and
 - c) it has been determined, as part of a *comprehensive review*, that the impacts of development will not place an undue strain on the *public service facilities* and *infrastructure* provided by adjacent municipalities, regions and/or the Province.

1.2 Coordination

- 1.2.1 A coordinated, integrated and comprehensive approach should be used when dealing with planning matters within municipalities, across lower, single and/or upper-tier municipal boundaries, and with other orders of government, agencies and boards including:
 - a) managing and/or promoting growth and development that is integrated with *infrastructure* planning;
 - b) economic development strategies;

- c) managing natural heritage, water, agricultural, mineral, and cultural heritage and archaeological resources;
 - d) *infrastructure, multimodal transportation systems, public service facilities and waste management systems*;
 - e) ecosystem, shoreline, watershed, and Great Lakes related issues;
 - f) natural and human-made hazards;
 - g) population, housing and employment projections, based on *regional market areas*; and
 - h) addressing housing needs in accordance with provincial policy statements such as the Policy Statement: Service Manager Housing and Homelessness Plans.
- 1.2.2 Planning authorities shall engage with Indigenous communities and coordinate on land use planning matters.
- 1.2.3 Planning authorities should coordinate emergency management and other economic, environmental and social planning considerations to support efficient and resilient communities.
- 1.2.4 Where planning is conducted by an upper-tier municipality, the upper-tier municipality in consultation with lower-tier municipalities shall:
- a) identify and allocate population, housing and employment projections for lower-tier municipalities. Allocations and projections by upper-tier municipalities shall be based on and reflect *provincial plans* where these exist and informed by provincial guidelines;
 - b) identify areas where growth or development will be directed, including the identification of nodes and the corridors linking these nodes;
 - c) identify targets for *intensification* and *redevelopment* within all or any of the lower-tier municipalities, including minimum targets that should be met before expansion of the boundaries of *settlement areas* is permitted in accordance with policy 1.1.3.8;
 - d) where major transit corridors exist or are to be developed, identify density targets for areas adjacent or in proximity to these corridors and stations, including minimum targets that should be met before expansion of the boundaries of *settlement areas* is permitted in accordance with policy 1.1.3.8; and
 - e) provide policy direction for the lower-tier municipalities on matters that cross municipal boundaries.
- 1.2.5 Where there is no upper-tier municipality, planning authorities shall ensure that policy 1.2.4 is addressed as part of the planning process, and should coordinate these matters with adjacent planning authorities.

1.2.6 Land Use Compatibility

1.2.6.1 *Major facilities and sensitive land uses* shall be planned and developed to avoid, or if avoidance is not possible, minimize and mitigate any potential *adverse effects* from odour, noise and other contaminants, minimize risk to public health and safety, and to ensure the long-term operational and economic viability of *major facilities* in accordance with provincial guidelines, standards and procedures.

1.2.6.2 Where avoidance is not possible in accordance with policy 1.2.6.1, planning authorities shall protect the long-term viability of existing or planned industrial, manufacturing or other uses that are vulnerable to encroachment by ensuring that the planning and *development* of proposed adjacent *sensitive land uses* are only permitted if the following are demonstrated in accordance with provincial guidelines, standards and procedures:

- a) there is an identified need for the proposed use;
- b) alternative locations for the proposed use have been evaluated and there are no reasonable alternative locations;
- c) *adverse effects* to the proposed *sensitive land use* are minimized and mitigated; and
- d) potential impacts to industrial, manufacturing or other uses are minimized and mitigated.

1.3 Employment

1.3.1 Planning authorities shall promote economic development and competitiveness by:

- a) providing for an appropriate mix and range of employment, institutional, and broader mixed uses to meet long-term needs;
- b) providing opportunities for a diversified economic base, including maintaining a range and choice of suitable sites for employment uses which support a wide range of economic activities and ancillary uses, and take into account the needs of existing and future businesses;
- c) facilitating the conditions for economic investment by identifying strategic sites for investment, monitoring the availability and suitability of employment sites, including market-ready sites, and seeking to address potential barriers to investment;
- d) encouraging compact, mixed-use development that incorporates compatible employment uses to support liveable and resilient communities, with consideration of housing policy 1.4; and
- e) ensuring the necessary *infrastructure* is provided to support current and projected needs.

1.3.2 Employment Areas

1.3.2.1 Planning authorities shall plan for, protect and preserve *employment areas* for current and future uses and ensure that the necessary *infrastructure* is provided to support current and projected needs.

1.3.2.2 At the time of the official plan review or update, planning authorities should assess *employment areas* identified in local official plans to ensure that this designation is appropriate to the planned function of the *employment area*.

Employment areas planned for industrial and manufacturing uses shall provide for separation or mitigation from *sensitive land uses* to maintain the long-term operational and economic viability of the planned uses and function of these areas.

1.3.2.3 Within *employment areas* planned for industrial or manufacturing uses, planning authorities shall prohibit residential uses and prohibit or limit other *sensitive land uses* that are not ancillary to the primary employment uses in order to maintain land use compatibility.

Employment areas planned for industrial or manufacturing uses should include an appropriate transition to adjacent non-*employment areas*.

1.3.2.4 Planning authorities may permit conversion of lands within *employment areas* to non-employment uses through a *comprehensive review*, only where it has been demonstrated that the land is not required for employment purposes over the long term and that there is a need for the conversion.

1.3.2.5 Notwithstanding policy 1.3.2.4, and until the official plan review or update in policy 1.3.2.4 is undertaken and completed, lands within existing *employment areas* may be converted to a designation that permits non-employment uses provided the area has not been identified as provincially significant through a provincial plan exercise or as regionally significant by a regional economic development corporation working together with affected upper and single-tier municipalities and subject to the following:

- a) there is an identified need for the conversion and the land is not required for employment purposes over the long term;
- b) the proposed uses would not adversely affect the overall viability of the *employment area*; and
- c) existing or planned *infrastructure* and *public service facilities* are available to accommodate the proposed uses.

1.3.2.6 Planning authorities shall protect *employment areas* in proximity to *major goods movement facilities and corridors* for employment uses that require those locations.

1.3.2.7 Planning authorities may plan beyond 25 years for the long-term protection of employment areas provided lands are not designated beyond the planning horizon identified in policy 1.1.2.

1.4 Housing

1.4.1 To provide for an appropriate range and mix of *housing options* and densities required to meet projected requirements of current and future residents of the *regional market area*, planning authorities shall:

- a) maintain at all times the ability to accommodate residential growth for a minimum of 15 years through *residential intensification* and *redevelopment* and, if necessary, lands which are *designated and available* for residential development; and
- b) maintain at all times where new development is to occur, land with servicing capacity sufficient to provide at least a three-year supply of residential units available through lands suitably zoned to facilitate *residential intensification* and *redevelopment*, and land in draft approved and registered plans.

Upper-tier and single-tier municipalities may choose to maintain land with servicing capacity sufficient to provide at least a five-year supply of residential units available through lands suitably zoned to facilitate *residential intensification* and *redevelopment*, and land in draft approved and registered plans.

1.4.2 Where planning is conducted by an upper-tier municipality:

- a) the land and unit supply maintained by the lower-tier municipality identified in policy 1.4.1 shall be based on and reflect the allocation of population and units by the upper-tier municipality; and
- b) the allocation of population and units by the upper-tier municipality shall be based on and reflect *provincial plans* where these exist.

1.4.3 Planning authorities shall provide for an appropriate range and mix of *housing options* and densities to meet projected market-based and affordable housing needs of current and future residents of the *regional market area* by:

- a) establishing and implementing minimum targets for the provision of housing which is *affordable to low and moderate income households* and which aligns with applicable housing and homelessness plans. However, where planning is conducted by an upper-tier municipality, the upper-tier municipality in consultation with the lower-tier municipalities may identify a higher target(s) which shall represent the minimum target(s) for these lower-tier municipalities;
- b) permitting and facilitating:
 1. all *housing options* required to meet the social, health, economic and well-being requirements of current and future residents, including *special needs* requirements and needs arising from demographic changes and employment opportunities; and
 2. all types of *residential intensification*, including additional residential units, and *redevelopment* in accordance with policy 1.1.3.3;

- c) directing the development of new housing towards locations where appropriate levels of *infrastructure* and *public service facilities* are or will be available to support current and projected needs;
- d) promoting densities for new housing which efficiently use land, resources, *infrastructure* and *public service facilities*, and support the use of *active transportation* and transit in areas where it exists or is to be developed;
- e) requiring *transit-supportive* development and prioritizing *intensification*, including potential air rights development, in proximity to transit, including corridors and stations; and
- f) establishing development standards for *residential intensification*, *redevelopment* and new residential development which minimize the cost of housing and facilitate compact form, while maintaining appropriate levels of public health and safety.

1.5 Public Spaces, Recreation, Parks, Trails and Open Space

1.5.1 Healthy, active communities should be promoted by:

- a) planning public streets, spaces and facilities to be safe, meet the needs of pedestrians, foster social interaction and facilitate *active transportation* and community connectivity;
- b) planning and providing for a full range and equitable distribution of publicly-accessible built and natural settings for *recreation*, including facilities, parklands, public spaces, open space areas, trails and linkages, and, where practical, water-based resources;
- c) providing opportunities for public access to shorelines; and
- d) recognizing provincial parks, conservation reserves, and other protected areas, and minimizing negative impacts on these areas.

1.6 Infrastructure and Public Service Facilities

1.6.1 *Infrastructure* and *public service facilities* shall be provided in an efficient manner that prepares for the *impacts of a changing climate* while accommodating projected needs.

Planning for *infrastructure* and *public service facilities* shall be coordinated and integrated with land use planning and growth management so that they are:

- a) financially viable over their life cycle, which may be demonstrated through asset management planning; and
- b) available to meet current and projected needs.

1.6.2 Planning authorities should promote *green infrastructure* to complement *infrastructure*.

- 1.6.3 Before consideration is given to developing new *infrastructure* and *public service facilities*:
- a) the use of existing *infrastructure* and *public service facilities* should be optimized; and
 - b) opportunities for adaptive re-use should be considered, wherever feasible.
- 1.6.4 *Infrastructure* and *public service facilities* should be strategically located to support the effective and efficient delivery of emergency management services, and to ensure the protection of public health and safety in accordance with the policies in Section 3.0: Protecting Public Health and Safety.
- 1.6.5 *Public service facilities* should be co-located in community hubs, where appropriate, to promote cost-effectiveness and facilitate service integration, access to transit and *active transportation*.

1.6.6 Sewage, Water and Stormwater

- 1.6.6.1 Planning for *sewage and water services* shall:
- a) accommodate forecasted growth in a manner that promotes the efficient use and optimization of existing:
 - 1. *municipal sewage services* and *municipal water services*; and
 - 2. *private communal sewage services* and *private communal water services*, where *municipal sewage services* and *municipal water services* are not available or feasible;
 - b) ensure that these systems are provided in a manner that:
 - 1. can be sustained by the water resources upon which such services rely;
 - 2. prepares for the *impacts of a changing climate*;
 - 3. is feasible and financially viable over their lifecycle; and
 - 4. protects human health and safety, and the natural environment;
 - c) promote water conservation and water use efficiency;
 - d) integrate servicing and land use considerations at all stages of the planning process; and
 - e) be in accordance with the servicing hierarchy outlined through policies 1.6.6.2, 1.6.6.3, 1.6.6.4 and 1.6.6.5. For clarity, where *municipal sewage services* and *municipal water services* are not available, planned or feasible, planning authorities have the ability to consider the use of the servicing options set out through policies 1.6.6.3, 1.6.6.4, and 1.6.6.5 provided that the specified conditions are met.
- 1.6.6.2 *Municipal sewage services* and *municipal water services* are the preferred form of servicing for *settlement areas* to support protection of the environment and minimize potential risks to human health and safety. Within *settlement areas* with existing *municipal sewage services* and *municipal water services*, *intensification* and *redevelopment* shall be promoted wherever feasible to optimize the use of the services.

1.6.6.3 Where *municipal sewage services* and *municipal water services* are not available, planned or feasible, *private communal sewage services* and *private communal water services* are the preferred form of servicing for multi-unit/lot *development* to support protection of the environment and minimize potential risks to human health and safety.

1.6.6.4 Where *municipal sewage services* and *municipal water services* or *private communal sewage services* and *private communal water services* are not available, planned or feasible, *individual on-site sewage services* and *individual on-site water services* may be used provided that site conditions are suitable for the long-term provision of such services with no *negative impacts*. In *settlement areas*, *individual on-site sewage services* and *individual on-site water services* may be used for infilling and minor rounding out of existing development.

At the time of the official plan review or update, planning authorities should assess the long-term impacts of *individual on-site sewage services* and *individual on-site water services* on the environmental health and the character of rural *settlement areas*. Where planning is conducted by an upper-tier municipality, the upper-tier municipality should work with lower-tier municipalities at the time of the official plan review or update to assess the long-term impacts of *individual on-site sewage services* and *individual on-site water services* on the environmental health and the desired character of rural *settlement areas* and the feasibility of other forms of servicing set out in policies 1.6.6.2 and 1.6.6.3.

1.6.6.5 *Partial services* shall only be permitted in the following circumstances:

- a) where they are necessary to address failed *individual on-site sewage services* and *individual on-site water services* in existing development; or
- b) within *settlement areas*, to allow for infilling and minor rounding out of existing development on *partial services* provided that site conditions are suitable for the long-term provision of such services with no *negative impacts*.

Where *partial services* have been provided to address failed services in accordance with subsection (a), infilling on existing lots of record in *rural areas* in municipalities may be permitted where this would represent a logical and financially viable connection to the existing *partial service* and provided that site conditions are suitable for the long-term provision of such services with no *negative impacts*. In accordance with subsection (a), the extension of *partial services* into *rural areas* is only permitted to address failed *individual on-site sewage* and *individual on-site water services* for existing development.

1.6.6.6 Subject to the hierarchy of services provided in policies 1.6.6.2, 1.6.6.3, 1.6.6.4 and 1.6.6.5, planning authorities may allow lot creation only if there is confirmation of sufficient *reserve sewage system capacity* and *reserve water system capacity* within *municipal sewage services* and *municipal water services* or *private communal sewage services* and *private communal water services*. The determination of

sufficient *reserve sewage system capacity* shall include treatment capacity for hauled sewage from *private communal sewage services* and *individual on-site sewage services*.

1.6.6.7 Planning for stormwater management shall:

- a) be integrated with planning for *sewage and water services* and ensure that systems are optimized, feasible and financially viable over the long term;
- b) minimize, or, where possible, prevent increases in contaminant loads;
- c) minimize erosion and changes in water balance, and prepare for the *impacts of a changing climate* through the effective management of stormwater, including the use of *green infrastructure*;
- d) mitigate risks to human health, safety, property and the environment;
- e) maximize the extent and function of vegetative and pervious surfaces; and
- f) promote stormwater management best practices, including stormwater attenuation and re-use, water conservation and efficiency, and low impact development.

1.6.7 Transportation Systems

1.6.7.1 *Transportation systems* should be provided which are safe, energy efficient, facilitate the movement of people and goods, and are appropriate to address projected needs.

1.6.7.2 Efficient use should be made of existing and planned *infrastructure*, including through the use of *transportation demand management* strategies, where feasible.

1.6.7.3 As part of a *multimodal transportation system*, connectivity within and among *transportation systems* and modes should be maintained and, where possible, improved including connections which cross jurisdictional boundaries.

1.6.7.4 A land use pattern, density and mix of uses should be promoted that minimize the length and number of vehicle trips and support current and future use of transit and *active transportation*.

1.6.8 Transportation and Infrastructure Corridors

1.6.8.1 Planning authorities shall plan for and protect corridors and rights-of-way for *infrastructure*, including transportation, transit and electricity generation facilities and transmission systems to meet current and projected needs.

1.6.8.2 *Major goods movement facilities and corridors* shall be protected for the long term.

1.6.8.3 Planning authorities shall not permit *development in planned corridors* that could preclude or negatively affect the use of the corridor for the purpose(s) for which it was identified.

New *development* proposed on *adjacent lands* to existing or *planned corridors* and transportation facilities should be compatible with, and supportive of, the long-term purposes of the corridor and should be designed to avoid, mitigate or minimize negative impacts on and from the corridor and transportation facilities.

- 1.6.8.4 The preservation and reuse of abandoned corridors for purposes that maintain the corridor's integrity and continuous linear characteristics should be encouraged, wherever feasible.
- 1.6.8.5 The co-location of linear *infrastructure* should be promoted, where appropriate.
- 1.6.8.6 When planning for corridors and rights-of-way for significant transportation, electricity transmission, and *infrastructure* facilities, consideration will be given to the significant resources in Section 2: Wise Use and Management of Resources.

1.6.9 Airports, Rail and Marine Facilities

1.6.9.1 Planning for land uses in the vicinity of *airports, rail facilities* and *marine facilities* shall be undertaken so that:

- a) their long-term operation and economic role is protected; and
- b) *airports, rail facilities* and *marine facilities* and *sensitive land uses* are appropriately designed, buffered and/or separated from each other, in accordance with policy 1.2.6.

1.6.9.2 *Airports* shall be protected from incompatible land uses and development by:

- a) prohibiting new residential *development* and other sensitive land uses in areas near *airports* above 30 NEF/NEP;
- b) considering redevelopment of existing residential uses and other sensitive land uses or infilling of residential and other sensitive land uses in areas above 30 NEF/NEP only if it has been demonstrated that there will be no negative impacts on the long-term function of the *airport*; and
- c) discouraging land uses which may cause a potential aviation safety hazard.

1.6.10 Waste Management

1.6.10.1 *Waste management systems* need to be provided that are of an appropriate size and type to accommodate present and future requirements, and facilitate, encourage and promote reduction, reuse and recycling objectives.

Waste management systems shall be located and designed in accordance with provincial legislation and standards.

1.6.11 Energy Supply

1.6.11.1 Planning authorities should provide opportunities for the development of energy supply including electricity generation facilities and transmission and distribution systems, district energy, and *renewable energy systems* and *alternative energy systems*, to accommodate current and projected needs.

1.7 Long-Term Economic Prosperity

1.7.1 Long-term economic prosperity should be supported by:

- a) promoting opportunities for economic development and community investment-readiness;
- b) encouraging residential uses to respond to dynamic market-based needs and provide necessary housing supply and range of *housing options* for a diverse workforce;
- c) optimizing the long-term availability and use of land, resources, *infrastructure* and *public service facilities*;
- d) maintaining and, where possible, enhancing the vitality and viability of downtowns and mainstreets;
- e) encouraging a sense of place, by promoting well-designed built form and cultural planning, and by conserving features that help define character, including *built heritage resources* and *cultural heritage landscapes*;
- f) promoting the redevelopment of *brownfield sites*;
- g) providing for an efficient, cost-effective, reliable *multimodal transportation system* that is integrated with adjacent systems and those of other jurisdictions, and is appropriate to address projected needs to support the movement of goods and people;
- h) providing opportunities for sustainable tourism development;
- i) sustaining and enhancing the viability of the *agricultural system* through protecting agricultural resources, minimizing land use conflicts, providing opportunities to support local food, and maintaining and improving the *agri-food network*;
- j) promoting energy conservation and providing opportunities for increased energy supply;
- k) minimizing negative impacts from a changing climate and considering the ecological benefits provided by nature; and
- l) encouraging efficient and coordinated communications and telecommunications infrastructure.

1.8 Energy Conservation, Air Quality and Climate Change

1.8.1 Planning authorities shall support energy conservation and efficiency, improved air quality, reduced greenhouse gas emissions, and preparing for the *impacts of a changing climate* through land use and development patterns which:

- a) promote compact form and a structure of nodes and corridors;
- b) promote the use of *active transportation* and transit in and between residential, employment (including commercial and industrial) and institutional uses and other areas;
- c) focus major employment, commercial and other travel-intensive land uses on sites which are well served by transit where this exists or is to be developed, or designing these to facilitate the establishment of transit in the future;
- d) focus freight-intensive land uses to areas well served by major highways, *airports, rail facilities and marine facilities*;
- e) encourage *transit-supportive* development and *intensification* to improve the mix of employment and housing uses to shorten commute journeys and decrease transportation congestion;
- f) promote design and orientation which maximizes energy efficiency and conservation, and considers the mitigating effects of vegetation and *green infrastructure*; and
- g) maximize vegetation within *settlement areas*, where feasible.

2.0 Wise Use and Management of Resources

Ontario's long-term prosperity, environmental health, and social well-being depend on conserving biodiversity, protecting the health of the Great Lakes, and protecting natural heritage, water, agricultural, mineral and cultural heritage and archaeological resources for their economic, environmental and social benefits.

Accordingly:

2.1 Natural Heritage

2.1.1 Natural features and areas shall be protected for the long term.

2.1.2 The diversity and connectivity of natural features in an area, and the long-term *ecological function* and biodiversity of *natural heritage systems*, should be maintained, restored or, where possible, improved, recognizing linkages between and among *natural heritage features and areas, surface water features and ground water features*.

2.1.3 *Natural heritage systems* shall be identified in Ecoregions 6E & 7E¹, recognizing that *natural heritage systems* will vary in size and form in *settlement areas, rural areas, and prime agricultural areas*.

2.1.4 *Development and site alteration* shall not be permitted in:

- a) *significant wetlands* in Ecoregions 5E, 6E and 7E¹; and
- b) *significant coastal wetlands*.

2.1.5 *Development and site alteration* shall not be permitted in:

- a) *significant wetlands* in the Canadian Shield north of Ecoregions 5E, 6E and 7E¹;
- b) *significant woodlands* in Ecoregions 6E and 7E (excluding islands in Lake Huron and the St. Marys River)¹;
- c) *significant valleylands* in Ecoregions 6E and 7E (excluding islands in Lake Huron and the St. Marys River)¹;
- d) *significant wildlife habitat*;
- e) *significant areas of natural and scientific interest*; and
- f) *coastal wetlands* in Ecoregions 5E, 6E and 7E¹ that are not subject to policy 2.1.4(b)

unless it has been demonstrated that there will be no *negative impacts* on the natural features or their *ecological functions*.

¹ Ecoregions 5E, 6E and 7E are shown on Figure 1.

- 2.1.6 *Development and site alteration shall not be permitted in fish habitat except in accordance with provincial and federal requirements.*
- 2.1.7 *Development and site alteration shall not be permitted in habitat of endangered species and threatened species, except in accordance with provincial and federal requirements.*
- 2.1.8 *Development and site alteration shall not be permitted on adjacent lands to the natural heritage features and areas identified in policies 2.1.4, 2.1.5, and 2.1.6 unless the ecological function of the adjacent lands has been evaluated and it has been demonstrated that there will be no negative impacts on the natural features or on their ecological functions.*
- 2.1.9 Nothing in policy 2.1 is intended to limit the ability of *agricultural uses* to continue.

2.2 Water

- 2.2.1 Planning authorities shall protect, improve or restore the *quality and quantity of water* by:
- a) using the *watershed* as the ecologically meaningful scale for integrated and long-term planning, which can be a foundation for considering cumulative impacts of development;
 - b) minimizing potential *negative impacts*, including cross-jurisdictional and cross-*watershed* impacts;
 - c) evaluating and preparing for the *impacts of a changing climate* to water resource systems at the watershed level;
 - d) identifying water resource systems consisting of *ground water features, hydrologic functions, natural heritage features and areas, and surface water features* including shoreline areas, which are necessary for the ecological and hydrological integrity of the *watershed*;
 - e) maintaining linkages and related functions among *ground water features, hydrologic functions, natural heritage features and areas, and surface water features* including shoreline areas;
 - f) implementing necessary restrictions on *development and site alteration* to:
 - 1. protect all municipal drinking water supplies and *designated vulnerable areas*; and
 - 2. protect, improve or restore *vulnerable* surface and ground water, *sensitive surface water features* and *sensitive ground water features*, and their *hydrologic functions*;
 - g) planning for efficient and sustainable use of water resources, through practices for water conservation and sustaining water quality;
 - h) ensuring consideration of environmental lake capacity, where applicable; and
 - i) ensuring stormwater management practices minimize stormwater volumes and contaminant loads, and maintain or increase the extent of vegetative and pervious surfaces.

- 2.2.2 *Development and site alteration* shall be restricted in or near *sensitive surface water features* and *sensitive ground water features* such that these features and their related *hydrologic functions* will be protected, improved or restored.

Mitigative measures and/or alternative development approaches may be required in order to protect, improve or restore *sensitive surface water features*, *sensitive ground water features*, and their *hydrologic functions*.

2.3 Agriculture

- 2.3.1 *Prime agricultural areas* shall be protected for long-term use for agriculture.

Prime agricultural areas are areas where *prime agricultural lands* predominate. *Specialty crop areas* shall be given the highest priority for protection, followed by Canada Land Inventory Class 1, 2, and 3 lands, and any associated Class 4 through 7 lands within the *prime agricultural area*, in this order of priority.

- 2.3.2 Planning authorities shall designate *prime agricultural areas* and *specialty crop areas* in accordance with guidelines developed by the Province, as amended from time to time.

Planning authorities are encouraged to use an *agricultural system* approach to maintain and enhance the geographic continuity of the agricultural land base and the functional and economic connections to the *agri-food network*.

2.3.3 Permitted Uses

- 2.3.3.1 In *prime agricultural areas*, permitted uses and activities are: *agricultural uses*, *agriculture-related uses* and *on-farm diversified uses*.

Proposed *agriculture-related uses* and *on-farm diversified uses* shall be compatible with, and shall not hinder, surrounding agricultural operations. Criteria for these uses may be based on guidelines developed by the Province or municipal approaches, as set out in municipal planning documents, which achieve the same objectives.

- 2.3.3.2 In *prime agricultural areas*, all types, sizes and intensities of *agricultural uses* and *normal farm practices* shall be promoted and protected in accordance with provincial standards.

- 2.3.3.3 New land uses in *prime agricultural areas*, including the creation of lots and new or expanding livestock facilities, shall comply with the *minimum distance separation formulae*.

2.3.4 Lot Creation and Lot Adjustments

2.3.4.1 Lot creation in *prime agricultural areas* is discouraged and may only be permitted for:

- a) *agricultural uses*, provided that the lots are of a size appropriate for the type of agricultural use(s) common in the area and are sufficiently large to maintain flexibility for future changes in the type or size of agricultural operations;
- b) *agriculture-related uses*, provided that any new lot will be limited to a minimum size needed to accommodate the use and appropriate *sewage and water services*;
- c) *a residence surplus to a farming operation* as a result of farm consolidation, provided that:
 - 1. the new lot will be limited to a minimum size needed to accommodate the use and appropriate *sewage and water services*; and
 - 2. the planning authority ensures that new residential dwellings are prohibited on any remnant parcel of farmland created by the severance. The approach used to ensure that no new residential dwellings are permitted on the remnant parcel may be recommended by the Province, or based on municipal approaches which achieve the same objective; and
- d) *infrastructure*, where the facility or corridor cannot be accommodated through the use of easements or rights-of-way.

2.3.4.2 Lot adjustments in *prime agricultural areas* may be permitted for *legal or technical reasons*.

2.3.4.3 The creation of new residential lots in *prime agricultural areas* shall not be permitted, except in accordance with policy 2.3.4.1(c).

2.3.5 Removal of Land from Prime Agricultural Areas

2.3.5.1 Planning authorities may only exclude land from *prime agricultural areas* for expansions of or identification of *settlement areas* in accordance with policy 1.1.3.8.

2.3.6 Non-Agricultural Uses in Prime Agricultural Areas

2.3.6.1 Planning authorities may only permit non-agricultural uses in *prime agricultural areas* for:

- a) extraction of *minerals, petroleum resources and mineral aggregate resources*; or
- b) limited non-residential uses, provided that all of the following are demonstrated:

1. the land does not comprise a *specialty crop area*;
2. the proposed use complies with the *minimum distance separation formulae*;
3. there is an identified need within the planning horizon provided for in policy 1.1.2 for additional land to accommodate the proposed use; and
4. alternative locations have been evaluated, and
 - i. there are no reasonable alternative locations which avoid *prime agricultural areas*; and
 - ii. there are no reasonable alternative locations in *prime agricultural areas* with lower priority agricultural lands.

2.3.6.2 Impacts from any new or expanding non-agricultural uses on surrounding agricultural operations and lands are to be mitigated to the extent feasible.

2.4 Minerals and Petroleum

2.4.1 *Minerals and petroleum resources* shall be protected for long-term use.

2.4.2 Protection of Long-Term Resource Supply

2.4.2.1 *Mineral mining operations and petroleum resource operations* shall be identified and protected from *development* and activities that would preclude or hinder their expansion or continued use or which would be incompatible for reasons of public health, public safety or environmental impact.

2.4.2.2 Known *mineral deposits*, known *petroleum resources* and *significant areas of mineral potential* shall be identified and *development* and activities in these resources or on *adjacent lands* which would preclude or hinder the establishment of new operations or access to the resources shall only be permitted if:

- a) resource use would not be feasible; or
- b) the proposed land use or development serves a greater long-term public interest; and
- c) issues of public health, public safety and environmental impact are addressed.

2.4.3 Rehabilitation

2.4.3.1 Rehabilitation to accommodate subsequent land uses shall be required after extraction and other related activities have ceased. Progressive rehabilitation should be undertaken wherever feasible.

2.4.4 Extraction in Prime Agricultural Areas

2.4.4.1 Extraction of *minerals* and *petroleum resources* is permitted in *prime agricultural areas* provided that the site will be rehabilitated.

2.5 Mineral Aggregate Resources

2.5.1 *Mineral aggregate resources* shall be protected for long-term use and, where provincial information is available, *deposits of mineral aggregate resources* shall be identified.

2.5.2 Protection of Long-Term Resource Supply

2.5.2.1 As much of the *mineral aggregate resources* as is realistically possible shall be made available as close to markets as possible.

Demonstration of need for *mineral aggregate resources*, including any type of supply/demand analysis, shall not be required, notwithstanding the availability, designation or licensing for extraction of *mineral aggregate resources* locally or elsewhere.

2.5.2.2 Extraction shall be undertaken in a manner which minimizes social, economic and environmental impacts.

2.5.2.3 *Mineral aggregate resource conservation* shall be undertaken, including through the use of accessory aggregate recycling facilities within operations, wherever feasible.

2.5.2.4 *Mineral aggregate operations* shall be protected from *development* and activities that would preclude or hinder their expansion or continued use or which would be incompatible for reasons of public health, public safety or environmental impact. Existing *mineral aggregate operations* shall be permitted to continue without the need for official plan amendment, rezoning or development permit under the *Planning Act*. Where the *Aggregate Resources Act* applies, only processes under the *Aggregate Resources Act* shall address the depth of extraction of new or existing *mineral aggregate operations*. When a license for extraction or operation ceases to exist, policy 2.5.2.5 continues to apply.

2.5.2.5 In known *deposits of mineral aggregate resources* and on *adjacent lands*, *development* and activities which would preclude or hinder the establishment of new operations or access to the resources shall only be permitted if:

- a) resource use would not be feasible; or
- b) the proposed land use or development serves a greater long-term public interest; and
- c) issues of public health, public safety and environmental impact are addressed.

2.5.3 Rehabilitation

- 2.5.3.1 Progressive and final rehabilitation shall be required to accommodate subsequent land uses, to promote land use compatibility, to recognize the interim nature of extraction, and to mitigate negative impacts to the extent possible. Final rehabilitation shall take surrounding land use and approved land use designations into consideration.
- 2.5.3.2 *Comprehensive rehabilitation* planning is encouraged where there is a concentration of mineral aggregate operations.
- 2.5.3.3 In parts of the Province not designated under the *Aggregate Resources Act*, rehabilitation standards that are compatible with those under the Act should be adopted for extraction operations on private lands.

2.5.4 Extraction in Prime Agricultural Areas

- 2.5.4.1 In *prime agricultural areas*, on *prime agricultural land*, extraction of *mineral aggregate resources* is permitted as an interim use provided that the site will be rehabilitated back to an *agricultural condition*.

Complete rehabilitation to an *agricultural condition* is not required if:

- a) outside of a *specialty crop area*, there is a substantial quantity of *mineral aggregate resources* below the water table warranting extraction, or the depth of planned extraction in a quarry makes restoration of pre-extraction agricultural capability unfeasible;
- b) in a *specialty crop area*, there is a substantial quantity of *high quality mineral aggregate resources* below the water table warranting extraction, and the depth of planned extraction makes restoration of pre-extraction agricultural capability unfeasible;
- c) other alternatives have been considered by the applicant and found unsuitable. The consideration of other alternatives shall include resources in areas of Canada Land Inventory Class 4 through 7 lands, resources on lands identified as *designated growth areas*, and resources on *prime agricultural lands* where rehabilitation is feasible. Where no other alternatives are found, *prime agricultural lands* shall be protected in this order of priority: *specialty crop areas*, Canada Land Inventory Class 1, 2 and 3 lands; and
- d) agricultural rehabilitation in remaining areas is maximized.

2.5.5 Wayside Pits and Quarries, Portable Asphalt Plants and Portable Concrete Plants

- 2.5.5.1 *Wayside pits and quarries*, *portable asphalt plants* and *portable concrete plants* used on public authority contracts shall be permitted, without the need for an official plan

amendment, rezoning, or development permit under the *Planning Act* in all areas, except those areas of existing development or particular environmental sensitivity which have been determined to be incompatible with extraction and associated activities.

2.6 Cultural Heritage and Archaeology

- 2.6.1 *Significant built heritage resources and significant cultural heritage landscapes shall be conserved.*
- 2.6.2 *Development and site alteration shall not be permitted on lands containing archaeological resources or areas of archaeological potential unless significant archaeological resources have been conserved.*
- 2.6.3 Planning authorities shall not permit *development and site alteration on adjacent lands to protected heritage property* except where the proposed *development and site alteration* has been evaluated and it has been demonstrated that the *heritage attributes* of the *protected heritage property* will be conserved.
- 2.6.4 Planning authorities should consider and promote archaeological management plans and cultural plans in conserving cultural heritage and archaeological resources.
- 2.6.5 Planning authorities shall engage with Indigenous communities and consider their interests when identifying, protecting and managing cultural heritage and archaeological resources.

3.0 Protecting Public Health and Safety

Ontario's long-term prosperity, environmental health and social well-being depend on reducing the potential for public cost or risk to Ontario's residents from natural or human-made hazards.

Development shall be directed away from areas of natural or human-made hazards where there is an unacceptable risk to public health or safety or of property damage, and not create new or aggravate existing hazards.

Mitigating potential risk to public health or safety or of property damage from natural hazards, including the risks that may be associated with the impacts of a changing climate, will require the Province, planning authorities, and conservation authorities to work together.

Accordingly:

3.1 Natural Hazards

3.1.1 Development shall generally be directed, in accordance with guidance developed by the Province (as amended from time to time), to areas outside of:

- a) *hazardous lands* adjacent to the shorelines of the *Great Lakes - St. Lawrence River System* and *large inland lakes* which are impacted by *flooding hazards, erosion hazards* and/or *dynamic beach hazards*;
- b) *hazardous lands* adjacent to *river, stream and small inland lake systems* which are impacted by *flooding hazards* and/or *erosion hazards*; and
- c) *hazardous sites*.

3.1.2 *Development* and *site alteration* shall not be permitted within:

- a) the *dynamic beach hazard*;
- b) *defined portions of the flooding hazard along connecting channels* (the St. Marys, St. Clair, Detroit, Niagara and St. Lawrence Rivers);
- c) areas that would be rendered inaccessible to people and vehicles during times of *flooding hazards, erosion hazards* and/or *dynamic beach hazards*, unless it has been demonstrated that the site has safe access appropriate for the nature of the *development* and the natural hazard; and
- d) a *floodway* regardless of whether the area of inundation contains high points of land not subject to flooding.

3.1.3 Planning authorities shall prepare for the *impacts of a changing climate* that may increase the risk associated with natural hazards.

3.1.4 Despite policy 3.1.2, *development* and *site alteration* may be permitted in certain areas associated with the *flooding hazard along river, stream and small inland lake systems*:

- a) in those exceptional situations where a *Special Policy Area* has been approved. The designation of a *Special Policy Area*, and any change or modification to the official plan policies, land use designations or boundaries applying to *Special Policy Area* lands, must be approved by the Ministers of Municipal Affairs and Housing and Natural Resources and Forestry prior to the approval authority approving such changes or modifications; or
- b) where the *development* is limited to uses which by their nature must locate within the *floodway*, including flood and/or erosion control works or minor additions or passive non-structural uses which do not affect flood flows.

3.1.5 *Development* shall not be permitted to locate in *hazardous lands* and *hazardous sites* where the use is:

- a) an *institutional use* including hospitals, long-term care homes, retirement homes, pre-schools, school nurseries, day cares and schools;
- b) an *essential emergency service* such as that provided by fire, police and ambulance stations and electrical substations; or
- c) uses associated with the disposal, manufacture, treatment or storage of *hazardous substances*.

3.1.6 Where the *two zone concept* for *flood plains* is applied, *development* and *site alteration* may be permitted in the *flood fringe*, subject to appropriate floodproofing to the *flooding hazard* elevation or another *flooding hazard* standard approved by the Minister of Natural Resources and Forestry.

3.1.7 Further to policy 3.1.6, and except as prohibited in policies 3.1.2 and 3.1.5, *development* and *site alteration* may be permitted in those portions of *hazardous lands* and *hazardous sites* where the effects and risk to public safety are minor, could be mitigated in accordance with provincial standards, and where all of the following are demonstrated and achieved:

- a) *development* and *site alteration* is carried out in accordance with *floodproofing standards*, *protection works standards*, and *access standards*;
- b) vehicles and people have a way of safely entering and exiting the area during times of flooding, erosion and other emergencies;
- c) new hazards are not created and existing hazards are not aggravated; and
- d) no adverse environmental impacts will result.

3.1.8 *Development* shall generally be directed to areas outside of lands that are unsafe for *development* due to the presence of *hazardous forest types for wildland fire*.

Development may however be permitted in lands with *hazardous forest types for wildland fire* where the risk is mitigated in accordance with *wildland fire assessment and mitigation standards*.

3.2 Human-Made Hazards

- 3.2.1 Development on, abutting or adjacent to lands affected by *mine hazards; oil, gas and salt hazards; or former mineral mining operations, mineral aggregate operations or petroleum resource operations* may be permitted only if rehabilitation or other measures to address and mitigate known or suspected hazards are under way or have been completed.
- 3.2.2 Sites with contaminants in land or water shall be assessed and remediated as necessary prior to any activity on the site associated with the proposed use such that there will be no *adverse effects*.
- 3.2.3 Planning authorities should support, where feasible, on-site and local re-use of excess soil through planning and development approvals while protecting human health and the environment.

4.0 Implementation and Interpretation

- 4.1 This Provincial Policy Statement applies to all decisions in respect of the exercise of any authority that affects a planning matter made on or after May 1, 2020.
- 4.2 This Provincial Policy Statement shall be read in its entirety and all relevant policies are to be applied to each situation.
- 4.3 This Provincial Policy Statement shall be implemented in a manner that is consistent with the recognition and affirmation of existing Aboriginal and treaty rights in section 35 of the *Constitution Act, 1982*.
- 4.4 This Provincial Policy Statement shall be implemented in a manner that is consistent with Ontario *Human Rights Code* and the *Canadian Charter of Rights and Freedoms*.
- 4.5 In implementing the Provincial Policy Statement, the Minister of Municipal Affairs and Housing may take into account other considerations when making decisions to support strong communities, a clean and healthy environment and the economic vitality of the Province.
- 4.6 The official plan is the most important vehicle for implementation of this Provincial Policy Statement. Comprehensive, integrated and long-term planning is best achieved through official plans.

Official plans shall identify provincial interests and set out appropriate land use designations and policies. To determine the significance of some natural heritage features and other resources, evaluation may be required.

In order to protect provincial interests, planning authorities shall keep their official plans up-to-date with this Provincial Policy Statement. The policies of this Provincial Policy Statement continue to apply after adoption and approval of an official plan.

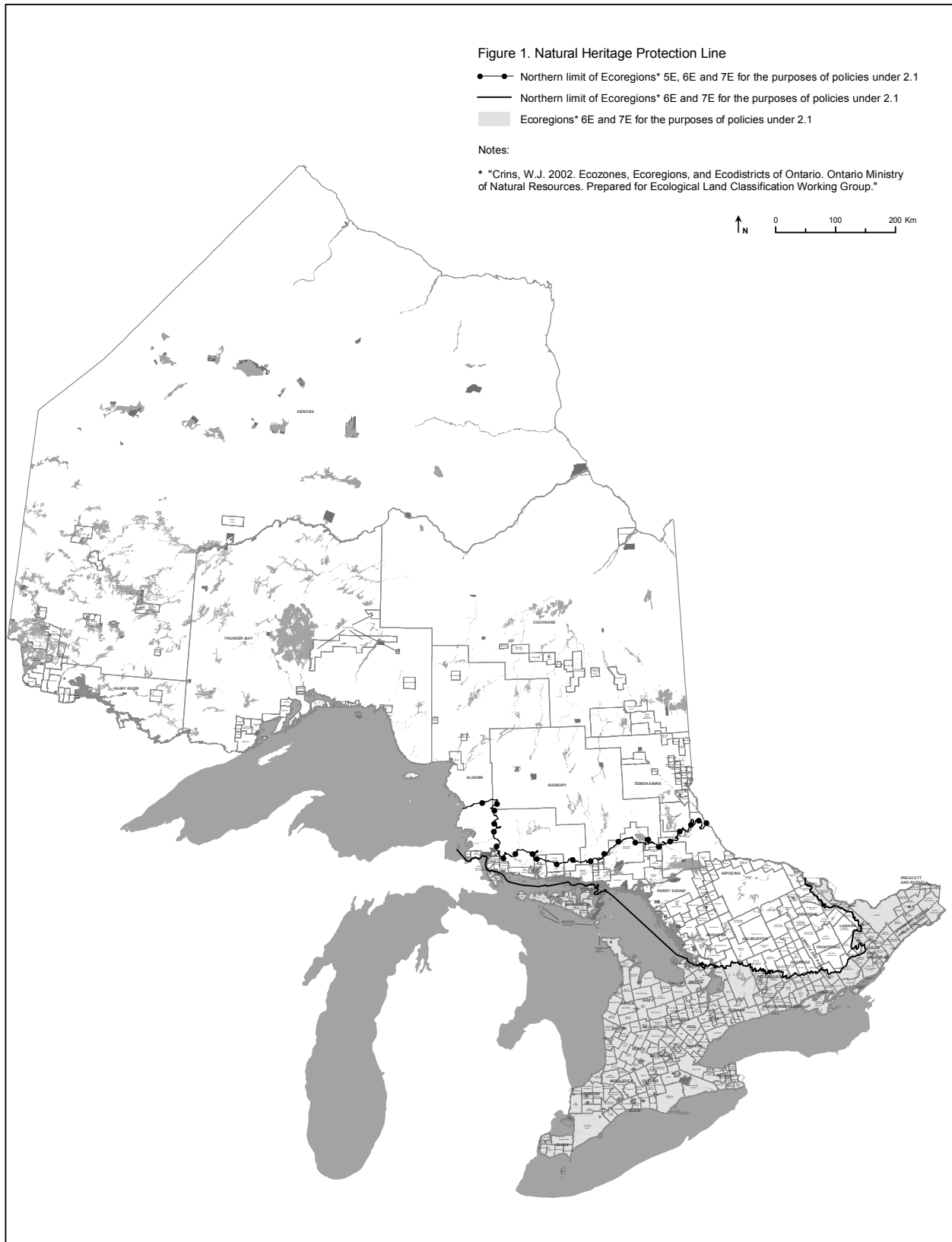
- 4.7 In addition to land use approvals under the *Planning Act*, *infrastructure* may also require approval under other legislation and regulations. An environmental assessment process may be required for new *infrastructure* and modifications to existing *infrastructure* under applicable legislation.

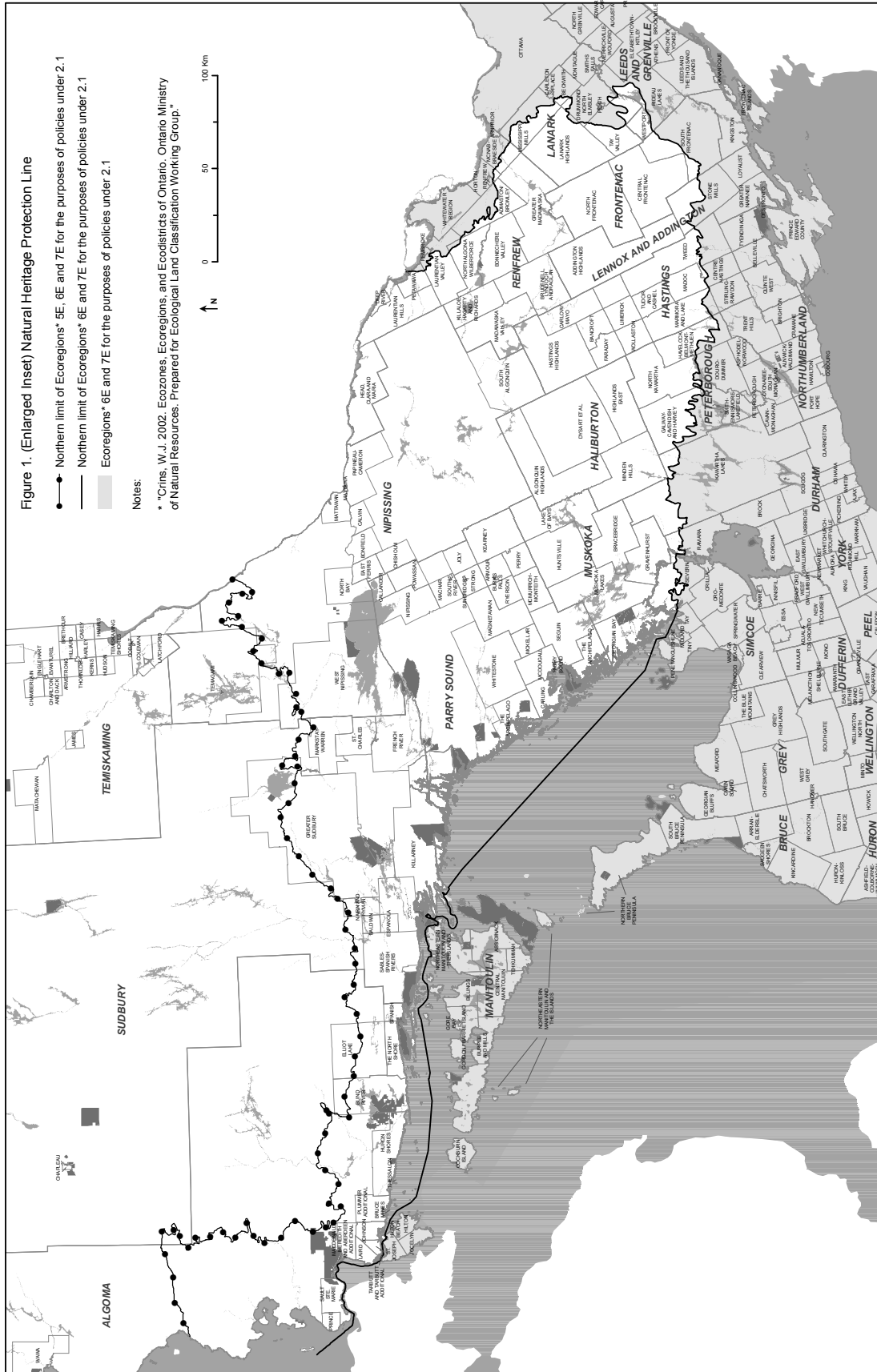
Wherever possible and practical, approvals under the *Planning Act* and other legislation or regulations should be integrated provided the intent and requirements of both processes are met.

- 4.8 The Province, in consultation with municipalities, Indigenous communities, other public bodies and stakeholders shall identify performance indicators for measuring the effectiveness of some or all of the policies. The Province shall monitor their implementation, including reviewing performance indicators concurrent with any review of this Provincial Policy Statement.

- 4.9 Municipalities are encouraged to monitor and report on the implementation of the policies in their official plans, in accordance with any reporting requirements, data standards and any other guidelines that may be issued by the Minister.

5.0 Figure 1 Natural Heritage Protection Line





6.0 Definitions

Access standards: means methods or procedures to ensure safe vehicular and pedestrian movement, and access for the maintenance and repair of protection works, during times of *flooding hazards, erosion hazards* and/or *other water-related hazards*.

Active transportation: means human-powered travel, including but not limited to, walking, cycling, inline skating and travel with the use of mobility aids, including motorized wheelchairs and other power-assisted devices moving at a comparable speed.

Adjacent lands: means

- a) for the purposes of policy 1.6.8.3, those lands contiguous to existing or planned corridors and transportation facilities where *development* would have a negative impact on the corridor or facility. The extent of the *adjacent lands* may be recommended in guidelines developed by the Province or based on municipal approaches that achieve the same objectives;
- b) for the purposes of policy 2.1.8, those lands contiguous to a specific *natural heritage feature or area* where it is likely that *development* or *site alteration* would have a *negative impact* on the feature or area. The extent of the *adjacent lands* may be recommended by the Province or based on municipal approaches which achieve the same objectives;
- c) for the purposes of policies 2.4.2.2 and 2.5.2.5, those lands contiguous to lands on the surface of known *petroleum resources, mineral deposits, or deposits of mineral aggregate resources* where it is likely that *development* would constrain future access to the resources. The extent of the *adjacent lands* may be recommended by the Province; and
- d) for the purposes of policy 2.6.3, those lands contiguous to a *protected heritage property* or as otherwise defined in the municipal official plan.

Adverse effects: as defined in the *Environmental Protection Act*, means one or more of:

- a) impairment of the quality of the natural environment for any use that can be made of it;
- b) injury or damage to property or plant or animal life;
- c) harm or material discomfort to any person;
- d) an adverse effect on the health of any person;
- e) impairment of the safety of any person;
- f) rendering any property or plant or animal life unfit for human use;
- g) loss of enjoyment of normal use of property; and
- h) interference with normal conduct of business.

Affordable: means

- a) in the case of ownership housing, the least expensive of:
 1. housing for which the purchase price results in annual accommodation costs which do not exceed 30 percent of gross annual household income for *low and moderate income households*; or
 2. housing for which the purchase price is at least 10 percent below the average purchase price of a resale unit in the *regional market area*;
- b) in the case of rental housing, the least expensive of:
 1. a unit for which the rent does not exceed 30 percent of gross annual household income for *low and moderate income households*; or
 2. a unit for which the rent is at or below the average market rent of a unit in the *regional market area*.

Agricultural condition: means

- a) in regard to *specialty crop areas*, a condition in which substantially the same areas and same average soil capability for agriculture are restored, the same range and productivity of specialty crops common in the area can be achieved, and, where

applicable, the microclimate on which the site and surrounding area may be dependent for specialty crop production will be maintained or restored; and

- b) in regard to *prime agricultural land* outside of *specialty crop areas*, a condition in which substantially the same areas and same average soil capability for agriculture are restored.

Agricultural System: A system comprised of a group of inter-connected elements that collectively create a viable, thriving agricultural sector. It has two components:

- a) An agricultural land base comprised of *prime agricultural areas*, including *specialty crop areas*, and *rural lands* that together create a continuous productive land base for agriculture; and
- b) An *agri-food network* which includes *infrastructure*, *services*, and *assets* important to the viability of the agri-food sector.

Agricultural uses: means the growing of crops, including nursery, biomass, and horticultural crops; raising of livestock; raising of other animals for food, fur or fibre, including poultry and fish; aquaculture; apiaries; agro-forestry; maple syrup production; and associated on-farm buildings and structures, including, but not limited to livestock facilities, manure storages, value-retaining facilities, and accommodation for full-time farm labour when the size and nature of the operation requires additional employment.

Agri-food network: Within the *agricultural system*, a network that includes elements important to the viability of the agri-food sector such as regional *infrastructure* and transportation networks; on-farm buildings and infrastructure; agricultural services, farm markets, distributors, and primary processing; and vibrant, agriculture-supportive communities.

Agri-tourism uses: means those farm-related tourism uses, including limited accommodation such as a bed and breakfast, that promote the enjoyment, education or activities related to the farm operation.

Agriculture-related uses: means those farm-related commercial and farm-related industrial uses that are directly related to farm operations in the area, support agriculture, benefit from being in close proximity to farm operations, and provide direct products and/or services to farm operations as a primary activity.

Airports: means all Ontario airports, including designated lands for future airports, with Noise Exposure Forecast (NEF)/Noise Exposure Projection (NEP) mapping.

Alternative energy system: means a system that uses sources of energy or energy conversion processes to produce power, heat and/or cooling that significantly reduces the amount of harmful emissions to the environment (air, earth and water) when compared to conventional energy systems.

Archaeological resources: includes artifacts, archaeological sites, marine archaeological sites, as defined under the *Ontario Heritage Act*. The identification and evaluation of such resources are based upon archaeological fieldwork undertaken in accordance with the *Ontario Heritage Act*.

Areas of archaeological potential: means areas with the likelihood to contain *archaeological resources*. Criteria to identify archaeological potential are established by the Province. The *Ontario Heritage Act* requires archaeological potential to be confirmed by a licensed archaeologist.

Areas of mineral potential: means areas favourable to the discovery of *mineral deposits* due to geology, the presence of known *mineral deposits* or other technical evidence.

Areas of natural and scientific interest (ANSI): means areas of land and water containing natural landscapes or features that have been identified as having life science or earth science values related to protection, scientific study or education.

Brownfield sites: means undeveloped or previously developed properties that may be

contaminated. They are usually, but not exclusively, former industrial or commercial properties that may be underutilized, derelict or vacant.

Built heritage resource: means a building, structure, monument, installation or any manufactured or constructed part or remnant that contributes to a property's cultural heritage value or interest as identified by a community, including an Indigenous community. *Built heritage resources* are located on property that may be designated under Parts IV or V of the *Ontario Heritage Act*, or that may be included on local, provincial, federal and/or international registers.

Coastal wetland: means

- a) any *wetland* that is located on one of the Great Lakes or their connecting channels (Lake St. Clair, St. Marys, St. Clair, Detroit, Niagara and St. Lawrence Rivers); or
- b) any other *wetland* that is on a tributary to any of the above-specified water bodies and lies, either wholly or in part, downstream of a line located 2 kilometres upstream of the 1:100 year floodline (plus wave run-up) of the large water body to which the tributary is connected.

Comprehensive rehabilitation: means rehabilitation of land from which *mineral aggregate resources* have been extracted that is coordinated and complementary, to the extent possible, with the rehabilitation of other sites in an area where there is a high concentration of *mineral aggregate operations*.

Comprehensive review: means

- a) for the purposes of policies 1.1.3.8, 1.1.3.9 and 1.3.2.4, an official plan review which is initiated by a planning authority, or an official plan amendment which is initiated or adopted by a planning authority, which:
 1. is based on a review of population and employment projections and which reflect projections and allocations by upper-tier municipalities and *provincial plans*, where applicable; considers alternative directions for growth or development; and determines how best

2. to accommodate the development while protecting provincial interests;
2. utilizes opportunities to accommodate projected growth or development through *intensification* and *redevelopment*; and considers physical constraints to accommodating the proposed development within existing *settlement area* boundaries;
3. is integrated with planning for *infrastructure* and *public service facilities*, and considers financial viability over the life cycle of these assets, which may be demonstrated through asset management planning;
4. confirms sufficient water quality, quantity and assimilative capacity of receiving water are available to accommodate the proposed development;
5. confirms that sewage and water services can be provided in accordance with policy 1.6.6; and
6. considers cross-jurisdictional issues.
- b) for the purposes of policy 1.1.6, means a review undertaken by a planning authority or comparable body which:
 1. addresses long-term population projections, *infrastructure* requirements and related matters;
 2. confirms that the lands to be developed do not comprise *specialty crop areas* in accordance with policy 2.3.2; and
 3. considers cross-jurisdictional issues.

In undertaking a *comprehensive review* the level of detail of the assessment should correspond with the complexity and scale of the settlement boundary or development proposal.

Conserved: means the identification, protection, management and use of *built heritage resources*, *cultural heritage landscapes* and *archaeological resources* in a manner that ensures their cultural heritage value or interest is retained. This may be achieved by the implementation of recommendations set out in a conservation plan, archaeological assessment, and/or heritage impact assessment that has been approved, accepted or adopted by the relevant planning authority and/or decision-

maker. Mitigative measures and/or alternative development approaches can be included in these plans and assessments.

Cultural heritage landscape: means a defined geographical area that may have been modified by human activity and is identified as having cultural heritage value or interest by a community, including an Indigenous community. The area may include features such as buildings, structures, spaces, views, archaeological sites or natural elements that are valued together for their interrelationship, meaning or association. *Cultural heritage landscapes* may be properties that have been determined to have cultural heritage value or interest under the *Ontario Heritage Act*, or have been included on federal and/or international registers, and/or protected through official plan, zoning by-law, or other land use planning mechanisms.

Defined portions of the flooding hazard along connecting channels: means those areas which are critical to the conveyance of the flows associated with the *one hundred year flood level* along the St. Marys, St. Clair, Detroit, Niagara and St. Lawrence Rivers, where *development or site alteration* will create *flooding hazards*, cause updrift and/or downdrift impacts and/or cause adverse environmental impacts.

Deposits of mineral aggregate resources: means an area of identified *mineral aggregate resources*, as delineated in Aggregate Resource Inventory Papers or comprehensive studies prepared using evaluation procedures established by the Province for surficial and bedrock resources, as amended from time to time, that has a sufficient quantity and quality to warrant present or future extraction.

Designated and available: means lands designated in the official plan for urban residential use. For municipalities where more detailed official plan policies (e.g. secondary plans) are required before development applications can be considered for approval, only lands that have commenced the more detailed planning process are considered to be

designated and available for the purposes of this definition.

Designated growth areas: means lands within *settlement areas* designated in an official plan for growth over the long-term planning horizon provided in policy 1.1.2, but which have not yet been fully developed. *Designated growth areas* include lands which are *designated and available* for residential growth in accordance with policy 1.4.1(a), as well as lands required for employment and other uses.

Designated vulnerable area: means areas defined as vulnerable, in accordance with provincial standards, by virtue of their importance as a drinking water source.

Development: means the creation of a new lot, a change in land use, or the construction of buildings and structures requiring approval under the *Planning Act*, but does not include:

- a) activities that create or maintain *infrastructure* authorized under an environmental assessment process;
- b) works subject to the *Drainage Act*; or
- c) for the purposes of policy 2.1.4(a), underground or surface mining of *minerals* or advanced exploration on mining lands in *significant areas of mineral potential* in Ecoregion 5E, where advanced exploration has the same meaning as under the *Mining Act*. Instead, those matters shall be subject to policy 2.1.5(a).

Dynamic beach hazard: means areas of inherently unstable accumulations of shoreline sediments along the *Great Lakes - St. Lawrence River System* and *large inland lakes*, as identified by provincial standards, as amended from time to time. The *dynamic beach hazard* limit consists of the *flooding hazard* limit plus a dynamic beach allowance.

Ecological function: means the natural processes, products or services that living and non-living environments provide or perform within or between species, ecosystems and landscapes. These may include biological, physical and socio-economic interactions.

Employment area: means those areas designated in an official plan for clusters of business and economic activities including, but not limited to, manufacturing, warehousing, offices, and associated retail and ancillary facilities.

Endangered species: means a species that is classified as “Endangered Species” on the Species at Risk in Ontario List, as updated and amended from time to time.

Erosion hazard: means the loss of land, due to human or natural processes, that poses a threat to life and property. The *erosion hazard* limit is determined using considerations that include the 100 year erosion rate (the average annual rate of recession extended over a one hundred year time span), an allowance for slope stability, and an erosion/erosion access allowance.

Essential emergency service: means services which would be impaired during an emergency as a result of flooding, the failure of floodproofing measures and/or protection works, and/or erosion.

Fish: means fish, which as defined in the *Fisheries Act*, includes fish, shellfish, crustaceans, and marine animals, at all stages of their life cycles.

Fish habitat: as defined in the *Fisheries Act*, means spawning grounds and any other areas, including nursery, rearing, food supply, and migration areas on which *fish* depend directly or indirectly in order to carry out their life processes.

Flood fringe: for *river, stream and small inland lake systems*, means the outer portion of the *flood plain* between the *floodway* and the *flooding hazard* limit. Depths and velocities of flooding are generally less severe in the flood fringe than those experienced in the *floodway*.

Flood plain: for *river, stream and small inland lake systems*, means the area, usually low lands adjoining a watercourse, which has been or may be subject to *flooding hazards*.

Flooding hazard: means the inundation, under the conditions specified below, of areas adjacent to a shoreline or a river or stream system and not ordinarily covered by water:

- a) along the shorelines of the *Great Lakes - St. Lawrence River System* and *large inland lakes*, the *flooding hazard* limit is based on the *one hundred year flood level* plus an allowance for *wave uprush* and *other water-related hazards*;
- b) along *river, stream and small inland lake systems*, the *flooding hazard* limit is the greater of:
 1. the flood resulting from the rainfall actually experienced during a major storm such as the Hurricane Hazel storm (1954) or the Timmins storm (1961), transposed over a specific watershed and combined with the local conditions, where evidence suggests that the storm event could have potentially occurred over watersheds in the general area;
 2. the *one hundred year flood*; and
 3. a flood which is greater than 1. or 2. which was actually experienced in a particular watershed or portion thereof as a result of ice jams and which has been approved as the standard for that specific area by the Minister of Natural Resources and Forestry;except where the use of the *one hundred year flood* or the actually experienced event has been approved by the Minister of Natural Resources and Forestry as the standard for a specific watershed (where the past history of flooding supports the lowering of the standard).

Floodproofing standard: means the combination of measures incorporated into the basic design and/or construction of buildings, structures, or properties to reduce or eliminate *flooding hazards, wave uprush* and *other water-related hazards* along the shorelines of the *Great Lakes - St. Lawrence River System* and *large inland lakes*, and *flooding hazards* along *river, stream and small inland lake systems*.

Floodway: for *river, stream and small inland lake systems*, means the portion of the *flood*

plain where *development* and *site alteration* would cause a danger to public health and safety or property damage.

Where the one zone concept is applied, the *floodway* is the entire contiguous *flood plain*.

Where the *two zone concept* is applied, the *floodway* is the contiguous inner portion of the *flood plain*, representing that area required for the safe passage of flood flow and/or that area where flood depths and/or velocities are considered to be such that they pose a potential threat to life and/or property damage. Where the *two zone concept* applies, the outer portion of the *flood plain* is called the *flood fringe*.

Freight-supportive: in regard to land use patterns, means transportation systems and facilities that facilitate the movement of goods. This includes policies or programs intended to support efficient freight movement through the planning, design and operation of land use and transportation systems. Approaches may be recommended in guidelines developed by the Province or based on municipal approaches that achieve the same objectives.

Great Lakes - St. Lawrence River System: means the major water system consisting of Lakes Superior, Huron, St. Clair, Erie and Ontario and their connecting channels, and the St. Lawrence River within the boundaries of the Province of Ontario.

Green infrastructure: means natural and human-made elements that provide ecological and hydrological functions and processes. *Green infrastructure* can include components such as natural heritage features and systems, parklands, stormwater management systems, street trees, urban forests, natural channels, permeable surfaces, and green roofs.

Ground water feature: means water-related features in the earth's subsurface, including recharge/discharge areas, water tables, aquifers and unsaturated zones that can be defined by surface and subsurface hydrogeologic investigations.

Habitat of endangered species and threatened species: means habitat within the meaning of Section 2 of the *Endangered Species Act, 2007*.

Hazardous forest types for wildland fire: means forest types assessed as being associated with the risk of high to extreme wildland fire using risk assessment tools established by the Ontario Ministry of Natural Resources and Forestry, as amended from time to time.

Hazardous lands: means property or lands that could be unsafe for development due to naturally occurring processes. Along the shorelines of the *Great Lakes - St. Lawrence River System*, this means the land, including that covered by water, between the international boundary, where applicable, and the furthest landward limit of the *flooding hazard, erosion hazard or dynamic beach hazard* limits. Along the shorelines of *large inland lakes*, this means the land, including that covered by water, between a defined offshore distance or depth and the furthest landward limit of the *flooding hazard, erosion hazard or dynamic beach hazard* limits. Along *river, stream and small inland lake systems*, this means the land, including that covered by water, to the furthest landward limit of the *flooding hazard or erosion hazard* limits.

Hazardous sites: means property or lands that could be unsafe for *development and site alteration* due to naturally occurring hazards. These may include unstable soils (sensitive marine clays [leda], organic soils) or unstable bedrock (karst topography).

Hazardous substances: means substances which, individually, or in combination with other substances, are normally considered to pose a danger to public health, safety and the environment. These substances generally include a wide array of materials that are toxic, ignitable, corrosive, reactive, radioactive or pathological.

Heritage attributes: means the principal features or elements that contribute to a *protected heritage property's* cultural heritage value or interest, and may include the

property's built, constructed, or manufactured elements, as well as natural landforms, vegetation, water features, and its visual setting (e.g. significant views or vistas to or from a *protected heritage property*).

High quality: means primary and secondary sand and gravel resources and bedrock resources as defined in the Aggregate Resource Inventory Papers (ARIP).

Housing options: means a range of housing types such as, but not limited to single-detached, semi-detached, rowhouses, townhouses, stacked townhouses, multiplexes, additional residential units, tiny homes, multi-residential buildings. The term can also refer to a variety of housing arrangements and forms such as, but not limited to life lease housing, co-ownership housing, co-operative housing, community land trusts, land lease community homes, *affordable* housing, housing for people with *special needs*, and housing related to employment, institutional or educational uses.

Hydrologic function: means the functions of the hydrological cycle that include the occurrence, circulation, distribution and chemical and physical properties of water on the surface of the land, in the soil and underlying rocks, and in the atmosphere, and water's interaction with the environment including its relation to living things.

Impacts of a changing climate: means the present and future consequences from changes in weather patterns at local and regional levels including extreme weather events and increased climate variability.

Individual on-site sewage services: means sewage systems, as defined in O. Reg. 332/12 under the *Building Code Act, 1992*, that are owned, operated and managed by the owner of the property upon which the system is located.

Individual on-site water services: means individual, autonomous water supply systems that are owned, operated and managed by the owner of the property upon which the system is located.

Infrastructure: means physical structures (facilities and corridors) that form the foundation for development. *Infrastructure* includes: sewage and water systems, septage treatment systems, stormwater management systems, waste management systems, electricity generation facilities, electricity transmission and distribution systems, communications/telecommunications, transit and transportation corridors and facilities, oil and gas pipelines and associated facilities.

Institutional use: for the purposes of policy 3.1.5, means land uses where there is a threat to the safe evacuation of vulnerable populations such as older persons, persons with disabilities, and those who are sick or young, during an emergency as a result of flooding, failure of floodproofing measures or protection works, or erosion.

Intensification: means the development of a property, site or area at a higher density than currently exists through:

- a) *redevelopment*, including the reuse of *brownfield sites*;
- b) the development of vacant and/or underutilized lots within previously developed areas;
- c) infill development; and
- d) the expansion or conversion of existing buildings.

Large inland lakes: means those waterbodies having a surface area of equal to or greater than 100 square kilometres where there is not a measurable or predictable response to a single runoff event.

Legal or technical reasons: means severances for purposes such as easements, corrections of deeds, quit claims, and minor boundary adjustments, which do not result in the creation of a new lot.

Low and moderate income households: means

- a) in the case of ownership housing, households with incomes in the lowest 60 percent of the income distribution for the *regional market area*; or

- b) in the case of rental housing, households with incomes in the lowest 60 percent of the income distribution for renter households for the *regional market area*.

Major facilities: means facilities which may require separation from *sensitive land uses*, including but not limited to airports, manufacturing uses, transportation infrastructure and corridors, *rail facilities*, *marine facilities*, sewage treatment facilities, *waste management systems*, oil and gas pipelines, industries, energy generation facilities and transmission systems, and resource extraction activities.

Major goods movement facilities and corridors: means transportation facilities and corridors associated with the inter- and intra-provincial movement of goods. Examples include: inter-modal facilities, ports, *airports*, *rail facilities*, truck terminals, freight corridors, freight facilities, and haul routes and primary transportation corridors used for the movement of goods. Approaches that are *freight-supportive* may be recommended in guidelines developed by the Province or based on municipal approaches that achieve the same objectives.

Marine facilities: means ferries, harbours, ports, ferry terminals, canals and associated uses, including designated lands for future *marine facilities*.

Mine hazard: means any feature of a mine as defined under the *Mining Act*, or any related disturbance of the ground that has not been rehabilitated.

Minerals: means metallic minerals and non-metallic minerals as herein defined, but does not include *mineral aggregate resources* or *petroleum resources*.

Metallic minerals means those minerals from which metals (e.g. copper, nickel, gold) are derived.

Non-metallic minerals means those minerals that are of value for intrinsic properties of the

minerals themselves and not as a source of metal. They are generally synonymous with industrial minerals (e.g. asbestos, graphite, kyanite, mica, nepheline syenite, salt, talc, and wollastonite).

Mineral aggregate operation: means

- a) lands under license or permit, other than for *wayside pits and quarries*, issued in accordance with the *Aggregate Resources Act*;
- b) for lands not designated under the *Aggregate Resources Act*, established pits and quarries that are not in contravention of municipal zoning by-laws and including adjacent land under agreement with or owned by the operator, to permit continuation of the operation; and
- c) associated facilities used in extraction, transport, beneficiation, processing or recycling of *mineral aggregate resources* and derived products such as asphalt and concrete, or the production of secondary related products.

Mineral aggregate resources: means gravel, sand, clay, earth, shale, stone, limestone, dolostone, sandstone, marble, granite, rock or other material prescribed under the *Aggregate Resources Act* suitable for construction, industrial, manufacturing and maintenance purposes but does not include metallic ores, asbestos, graphite, kyanite, mica, nepheline syenite, salt, talc, wollastonite, mine tailings or other material prescribed under the *Mining Act*.

Mineral aggregate resource conservation: means

- a) the recovery and recycling of manufactured materials derived from mineral aggregates (e.g. glass, porcelain, brick, concrete, asphalt, slag, etc.), for re-use in construction, manufacturing, industrial or maintenance projects as a substitute for new mineral aggregates; and
- b) the wise use of mineral aggregates including utilization or extraction of on-site *mineral aggregate resources* prior to development occurring.

Mineral deposits: means areas of identified *minerals* that have sufficient quantity and quality based on specific geological evidence to warrant present or future extraction.

Mineral mining operation: means mining operations and associated facilities, or, past producing mines with remaining mineral development potential that have not been permanently rehabilitated to another use.

Minimum distance separation formulae: means formulae and guidelines developed by the Province, as amended from time to time, to separate uses so as to reduce incompatibility concerns about odour from livestock facilities.

Multimodal transportation system: means a transportation system which may include several forms of transportation such as automobiles, walking, trucks, cycling, buses, rapid transit, rail (such as commuter and freight), air and marine.

Municipal sewage services: means a sewage works within the meaning of section 1 of the *Ontario Water Resources Act* that is owned or operated by a municipality, including centralized and decentralized systems.

Municipal water services: means a municipal drinking-water system within the meaning of section 2 of the *Safe Drinking Water Act, 2002*, including centralized and decentralized systems.

Natural heritage features and areas: means features and areas, including *significant wetlands, significant coastal wetlands, other coastal wetlands* in Ecoregions 5E, 6E and 7E, *fish habitat, significant woodlands* and *significant valleylands* in Ecoregions 6E and 7E (excluding islands in Lake Huron and the St. Marys River), *habitat of endangered species and threatened species, significant wildlife habitat, and significant areas of natural and scientific interest*, which are important for their environmental and social values as a legacy of the natural landscapes of an area.

Natural heritage system: means a system made up of *natural heritage features and areas*,

and linkages intended to provide connectivity (at the regional or site level) and support natural processes which are necessary to maintain biological and geological diversity, natural functions, viable populations of indigenous species, and ecosystems. These systems can include *natural heritage features and areas*, federal and provincial parks and conservation reserves, other natural heritage features, lands that have been restored or have the potential to be restored to a natural state, areas that support hydrologic functions, and working landscapes that enable ecological functions to continue. The Province has a recommended approach for identifying *natural heritage systems*, but municipal approaches that achieve or exceed the same objective may also be used.

Negative impacts: means

- a) in regard to policy 1.6.6.4 and 1.6.6.5, potential risks to human health and safety and degradation to the *quality and quantity of water, sensitive surface water features and sensitive ground water features*, and their related *hydrologic functions*, due to single, multiple or successive *development*. *Negative impacts* should be assessed through environmental studies including hydrogeological or water quality impact assessments, in accordance with provincial standards;
- b) in regard to policy 2.2, degradation to the *quality and quantity of water, sensitive surface water features and sensitive ground water features*, and their related *hydrologic functions*, due to single, multiple or successive *development* or *site alteration* activities;
- c) in regard to *fish habitat*, any permanent alteration to, or destruction of *fish habitat*, except where, in conjunction with the appropriate authorities, it has been authorized under the *Fisheries Act*; and
- d) in regard to other *natural heritage features and areas*, degradation that threatens the health and integrity of the natural features or *ecological functions* for which an area is identified due to single, multiple or successive *development* or *site alteration* activities.

Normal farm practices: means a practice, as defined in the *Farming and Food Production Protection Act, 1998*, that is conducted in a manner consistent with proper and acceptable customs and standards as established and followed by similar agricultural operations under similar circumstances; or makes use of innovative technology in a manner consistent with proper advanced farm management practices. Normal farm practices shall be consistent with the *Nutrient Management Act, 2002* and regulations made under that Act.

Oil, gas and salt hazards: means any feature of a well or work as defined under the *Oil, Gas and Salt Resources Act*, or any related disturbance of the ground that has not been rehabilitated.

On-farm diversified uses: means uses that are secondary to the principal agricultural use of the property, and are limited in area. *On-farm diversified uses* include, but are not limited to, home occupations, home industries, *agri-tourism uses*, and uses that produce value-added agricultural products. Ground-mounted solar facilities are permitted in *prime agricultural areas*, including *specialty crop areas*, only as *on-farm diversified uses*.

One hundred year flood: for *river, stream and small inland lake systems*, means that flood, based on an analysis of precipitation, snow melt, or a combination thereof, having a return period of 100 years on average, or having a 1% chance of occurring or being exceeded in any given year.

One hundred year flood level: means

- for the shorelines of the Great Lakes, the peak instantaneous stillwater level, resulting from combinations of mean monthly lake levels and wind setups, which has a 1% chance of being equalled or exceeded in any given year;
- in the connecting channels (St. Marys, St. Clair, Detroit, Niagara and St. Lawrence Rivers), the peak instantaneous stillwater level which has a 1% chance of being equalled or exceeded in any given year; and
- for large inland lakes, lake levels and wind setups that have a 1% chance of being

equalled or exceeded in any given year, except that, where sufficient water level records do not exist, the one hundred year flood level is based on the highest known water level and wind setups.

Other water-related hazards: means water-associated phenomena other than *flooding hazards* and *wave uprush* which act on shorelines. This includes, but is not limited to ship-generated waves, ice piling and ice jamming.

Partial services: means

- municipal sewage services* or *private communal sewage services* combined with *individual on-site water services*; or
- municipal water services* or *private communal water services* combined with *individual on-site sewage services*.

Petroleum resource operations: means oil, gas and salt wells and associated facilities and other drilling operations, oil field fluid disposal wells and associated facilities, and wells and facilities for the underground storage of natural gas and other hydrocarbons.

Petroleum resources: means oil, gas, and salt (extracted by solution mining method) and formation water resources which have been identified through exploration and verified by preliminary drilling or other forms of investigation. This may include sites of former operations where resources are still present or former sites that may be converted to underground storage for natural gas or other hydrocarbons.

Planned corridors: means corridors or future corridors which are required to meet projected needs, and are identified through *provincial plans*, preferred alignment(s) determined through the *Environmental Assessment Act* process, or identified through planning studies where the Ontario Ministry of Transportation, Metrolinx, Ontario Ministry of Energy, Northern Development and Mines or Independent Electricity System Operator (IESO) or any successor to those ministries or entities is actively pursuing the identification of a corridor.

Approaches for the protection of *planned corridors* may be recommended in guidelines developed by the Province.

Portable asphalt plant: means a facility

- a) with equipment designed to heat and dry aggregate and to mix aggregate with bituminous asphalt to produce asphalt paving material, and includes stockpiling and storage of bulk materials used in the process; and
- b) which is not of permanent construction, but which is to be dismantled at the completion of the construction project.

Portable concrete plant: means a building or structure

- a) with equipment designed to mix cementing materials, aggregate, water and admixtures to produce concrete, and includes stockpiling and storage of bulk materials used in the process; and
- b) which is not of permanent construction, but which is designed to be dismantled at the completion of the construction project.

Prime agricultural area: means areas where *prime agricultural lands* predominate. This includes areas of *prime agricultural lands* and associated Canada Land Inventory Class 4 through 7 lands, and additional areas where there is a local concentration of farms which exhibit characteristics of ongoing agriculture. *Prime agricultural areas* may be identified by the Ontario Ministry of Agriculture and Food using guidelines developed by the Province as amended from time to time. A *prime agricultural area* may also be identified through an alternative agricultural land evaluation system approved by the Province.

Prime agricultural land: means *specialty crop areas* and/or Canada Land Inventory Class 1, 2, and 3 lands, as amended from time to time, in this order of priority for protection.

Private communal sewage services: means a sewage works within the meaning of section 1 of the *Ontario Water Resources Act* that serves six or more lots or private residences and is not owned by a municipality.

Private communal water services: means a non-municipal drinking-water system within the meaning of section 2 of the *Safe Drinking Water Act, 2002* that serves six or more lots or private residences.

Protected heritage property: means property designated under Parts IV, V or VI of the *Ontario Heritage Act*; property subject to a heritage conservation easement under Parts II or IV of the *Ontario Heritage Act*; property identified by the Province and prescribed public bodies as provincial heritage property under the Standards and Guidelines for Conservation of Provincial Heritage Properties; property protected under federal legislation, and UNESCO World Heritage Sites.

Protection works standards: means the combination of non-structural or structural works and allowances for slope stability and flooding/erosion to reduce the damage caused by *flooding hazards*, *erosion hazards* and *other water-related hazards*, and to allow access for their maintenance and repair.

Provincial and federal requirements: means

- a) in regard to policy 2.1.6, legislation and policies administered by the federal or provincial governments for the purpose of fisheries protection (including *fish* and *fish habitat*), and related, scientifically established standards such as water quality criteria for protecting lake trout populations; and
- b) in regard to policy 2.1.7, legislation and policies administered by the provincial government or federal government, where applicable, for the purpose of protecting species at risk and their habitat.

Provincial plan: means a provincial plan within the meaning of section 1 of the *Planning Act*.

Public service facilities: means land, buildings and structures for the provision of programs and services provided or subsidized by a government or other body, such as social assistance, recreation, police and fire protection, health and educational programs, long-term care services, and cultural services.

Public service facilities do not include *infrastructure*.

Quality and quantity of water: is measured by indicators associated with hydrologic function such as minimum base flow, depth to water table, aquifer pressure, oxygen levels, suspended solids, temperature, bacteria, nutrients and hazardous contaminants, and hydrologic regime.

Rail facilities: means rail corridors, rail sidings, train stations, inter-modal facilities, rail yards and associated uses, including designated lands for future *rail facilities*.

Recreation: means leisure time activity undertaken in built or natural settings for purposes of physical activity, health benefits, sport participation and skill development, personal enjoyment, positive social interaction and the achievement of human potential.

Redevelopment: means the creation of new units, uses or lots on previously developed land in existing communities, including *brownfield sites*.

Regional market area: refers to an area that has a high degree of social and economic interaction. The upper or single-tier municipality, or planning area, will normally serve as the *regional market area*. However, where a *regional market area* extends significantly beyond these boundaries, then the *regional market area* may be based on the larger market area. Where *regional market areas* are very large and sparsely populated, a smaller area, if defined in an official plan, may be utilized.

Renewable energy source: means an energy source that is renewed by natural processes and includes wind, water, biomass, biogas, biofuel, solar energy, geothermal energy and tidal forces.

Renewable energy system: means a system that generates electricity, heat and/or cooling from a *renewable energy source*.

Reserve sewage system capacity: means design or planned capacity in a centralized waste water treatment facility which is not yet committed to existing or approved development. For the purposes of policy 1.6.6.6, reserve capacity for *private communal sewage services* and *individual on-site sewage services* is considered sufficient if the hauled sewage from the development can be treated and land-applied on agricultural land under the *Nutrient Management Act*, or disposed of at sites approved under the *Environmental Protection Act* or the *Ontario Water Resources Act*, but not by land-applying untreated, hauled sewage.

Reserve water system capacity: means design or planned capacity in a centralized water treatment facility which is not yet committed to existing or approved development.

Residence surplus to a farming operation: means an existing habitable farm residence that is rendered surplus as a result of farm consolidation (the acquisition of additional farm parcels to be operated as one farm operation).

Residential intensification: means intensification of a property, site or area which results in a net increase in residential units or accommodation and includes:

- a) redevelopment, including the redevelopment of *brownfield sites*;
- b) the development of vacant or underutilized lots within previously developed areas;
- c) infill development;
- d) development and introduction of new *housing options* within previously developed areas;
- e) the conversion or expansion of existing industrial, commercial and institutional buildings for residential use; and
- f) the conversion or expansion of existing residential buildings to create new residential units or accommodation, including accessory apartments, additional residential units, rooming houses, and other *housing options*.

River, stream and small inland lake systems: means all watercourses, rivers, streams, and

small inland lakes or waterbodies that have a measurable or predictable response to a single runoff event.

Rural areas: means a system of lands within municipalities that may include rural *settlement areas, rural lands, prime agricultural areas*, natural heritage features and areas, and resource areas.

Rural lands: means lands which are located outside *settlement areas* and which are outside *prime agricultural areas*.

Sensitive: in regard to *surface water features* and *ground water features*, means areas that are particularly susceptible to impacts from activities or events including, but not limited to, water withdrawals, and additions of pollutants.

Sensitive land uses: means buildings, amenity areas, or outdoor spaces where routine or normal activities occurring at reasonably expected times would experience one or more *adverse effects* from contaminant discharges generated by a nearby *major facility*. *Sensitive land uses* may be a part of the natural or built environment. Examples may include, but are not limited to: residences, day care centres, and educational and health facilities.

Settlement areas: means urban areas and rural settlement areas within municipalities (such as cities, towns, villages and hamlets) that are:

- a) built-up areas where development is concentrated and which have a mix of land uses; and
- b) lands which have been designated in an official plan for development over the long-term planning horizon provided for in policy 1.1.2. In cases where land in *designated growth areas* is not available, the *settlement area* may be no larger than the area where development is concentrated.

Sewage and water services: includes *municipal sewage services* and *municipal water services*, *private communal sewage services* and *private communal water services*, *individual on-site sewage services* and *individual on-site water services*, and *partial services*.

Significant: means

- a) in regard to *wetlands, coastal wetlands* and *areas of natural and scientific interest*, an area identified as provincially significant by the Ontario Ministry of Natural Resources and Forestry using evaluation procedures established by the Province, as amended from time to time;
- b) in regard to *woodlands*, an area which is ecologically important in terms of features such as species composition, age of trees and stand history; functionally important due to its contribution to the broader landscape because of its location, size or due to the amount of forest cover in the planning area; or economically important due to site quality, species composition, or past management history. These are to be identified using criteria established by the Ontario Ministry of Natural Resources and Forestry;
- c) in regard to other features and areas in policy 2.1, ecologically important in terms of features, functions, representation or amount, and contributing to the quality and diversity of an identifiable geographic area or *natural heritage system*;
- d) in regard to *mineral* potential, an area identified as provincially significant through evaluation procedures developed by the Province, as amended from time to time, such as the Provincially Significant Mineral Potential Index; and
- e) in regard to cultural heritage and archaeology, resources that have been determined to have cultural heritage value or interest. Processes and criteria for determining cultural heritage value or interest are established by the Province under the authority of the *Ontario Heritage Act*.

Criteria for determining significance for the resources identified in sections (c)-(d) are recommended by the Province, but municipal approaches that achieve or exceed the same objective may also be used.

While some significant resources may already be identified and inventoried by official sources,

the significance of others can only be determined after evaluation.

Site alteration: means activities, such as grading, excavation and the placement of fill that would change the landform and natural vegetative characteristics of a site.

For the purposes of policy 2.1.4(a), *site alteration* does not include underground or surface mining of *minerals* or advanced exploration on mining lands in *significant areas of mineral potential* in Ecoregion 5E, where advanced exploration has the same meaning as in the *Mining Act*. Instead, those matters shall be subject to policy 2.1.5(a).

Special needs: means any housing, including dedicated facilities, in whole or in part, that is used by people who have specific needs beyond economic needs, including but not limited to, needs such as mobility requirements or support functions required for daily living. Examples of *special needs* housing may include, but are not limited to long-term care homes, adaptable and accessible housing, and housing for persons with disabilities such as physical, sensory or mental health disabilities, and housing for older persons.

Special Policy Area: means an area within a community that has historically existed in the *flood plain* and where site-specific policies, approved by both the Ministers of Natural Resources and Forestry and Municipal Affairs and Housing, are intended to provide for the continued viability of existing uses (which are generally on a small scale) and address the significant social and economic hardships to the community that would result from strict adherence to provincial policies concerning *development*. The criteria and procedures for approval are established by the Province.

A *Special Policy Area* is not intended to allow for new or intensified *development* and *site alteration*, if a community has feasible opportunities for *development* outside the *flood plain*.

Specialty crop area: means areas designated using guidelines developed by the Province, as amended from time to time. In these areas, specialty crops are predominantly grown such as tender fruits (peaches, cherries, plums), grapes, other fruit crops, vegetable crops, greenhouse crops, and crops from agriculturally developed organic soil, usually resulting from:

- a) soils that have suitability to produce specialty crops, or lands that are subject to special climatic conditions, or a combination of both;
- b) farmers skilled in the production of specialty crops; and
- c) a long-term investment of capital in areas such as crops, drainage, infrastructure and related facilities and services to produce, store, or process specialty crops.

Surface water feature: means water-related features on the earth's surface, including headwaters, rivers, stream channels, inland lakes, seepage areas, recharge/discharge areas, springs, wetlands, and associated riparian lands that can be defined by their soil moisture, soil type, vegetation or topographic characteristics.

Threatened species: means a species that is classified as "Threatened Species" on the Species at Risk in Ontario List, as updated and amended from time to time.

Transit-supportive: in regard to land use patterns, means development that makes transit viable, optimizes investments in transit infrastructure, and improves the quality of the experience of using transit. It often refers to compact, mixed-use development that has a high level of employment and residential densities, including air rights development, in proximity to transit stations, corridors and associated elements within the *transportation system*. Approaches may be recommended in guidelines developed by the Province or based on municipal approaches that achieve the same objectives.

Transportation demand management: means a set of strategies that result in more efficient use of the *transportation system* by influencing travel behaviour by mode, time of day,

frequency, trip length, regulation, route, or cost.

Transportation system: means a system consisting of facilities, corridors and rights-of-way for the movement of people and goods, and associated transportation facilities including transit stops and stations, sidewalks, cycle lanes, bus lanes, high occupancy vehicle lanes, *rail facilities*, parking facilities, park'n'ride lots, service centres, rest stops, vehicle inspection stations, inter-modal facilities, harbours, *airports*, *marine facilities*, ferries, canals and associated facilities such as storage and maintenance.

Two zone concept: means an approach to *flood plain* management where the *flood plain* is differentiated in two parts: the *floodway* and the *flood fringe*.

Valleylands: means a natural area that occurs in a valley or other landform depression that has water flowing through or standing for some period of the year.

Vulnerable: means surface and/or ground water that can be easily changed or impacted.

Waste management system: means sites and facilities to accommodate solid waste from one or more municipalities and includes recycling facilities, transfer stations, processing sites and disposal sites.

Watershed: means an area that is drained by a river and its tributaries.

Wave uprush: means the rush of water up onto a shoreline or structure following the breaking of a wave; the limit of wave uprush is the point of furthest landward rush of water onto the shoreline.

Wayside pits and quarries: means a temporary pit or quarry opened and used by or for a public authority solely for the purpose of a particular project or contract of road construction and not located on the road right-of-way.

Wetlands: means lands that are seasonally or permanently covered by shallow water, as well

as lands where the water table is close to or at the surface. In either case the presence of abundant water has caused the formation of hydric soils and has favoured the dominance of either hydrophytic plants or water tolerant plants. The four major types of wetlands are swamps, marshes, bogs and fens.

Periodically soaked or wet lands being used for agricultural purposes which no longer exhibit wetland characteristics are not considered to be wetlands for the purposes of this definition.

Wildland fire assessment and mitigation standards: means the combination of risk assessment tools and environmentally appropriate mitigation measures identified by the Ontario Ministry of Natural Resources and Forestry to be incorporated into the design, construction and/or modification of buildings, structures, properties and/or communities to reduce the risk to public safety, infrastructure and property from wildland fire.

Wildlife habitat: means areas where plants, animals and other organisms live, and find adequate amounts of food, water, shelter and space needed to sustain their populations. Specific wildlife habitats of concern may include areas where species concentrate at a vulnerable point in their annual or life cycle; and areas which are important to migratory or non-migratory species.

Woodlands: means treed areas that provide environmental and economic benefits to both the private landowner and the general public, such as erosion prevention, hydrological and nutrient cycling, provision of clean air and the long-term storage of carbon, provision of wildlife habitat, outdoor recreational opportunities, and the sustainable harvest of a wide range of woodland products. *Woodlands* include treed areas, woodlots or forested areas and vary in their level of significance at the local, regional and provincial levels. *Woodlands* may be delineated according to the *Forestry Act* definition or the Province's Ecological Land Classification system definition for "forest".

Ministry of Municipal Affairs and Housing

© Queen's Printer for Ontario, 2020

ISBN 978-1-4868-4229-2 (Print)

ISBN 978-1-4868-4230-8 (HTML)

ISBN 978-1-4868-4231-5 (PDF)

370/02/20

Disponible en français



REPORT TO COUNCIL DEVELOPMENT SERVICES DEPARTMENT



AGENDA DATE: May 19, 2020

REPORT DATE: May 12, 2020

SUBJECT: Delegation of Authority for Undisputed Consent Approval to Staff

RECOMMENDATION:

THAT Council pass By-law 2020-27 delegating consent granting approval authority to staff for undisputed consents and validation certificates.

BACKGROUND:

Restrictions such as limiting the size of public gatherings and physical distancing during the COVID 19 Emergency mean that traditional public meetings under the *Planning Act* cannot occur.

There has been an evolving body of legislation and regulations that have applied to applications submitted under the *Planning Act* during the provincial COVID19 state of emergency. The Province issued [O.Reg 149/20](#) on April 15th, 2020. This regulation clarified that for the duration of the Provincial Emergency:

- Municipalities could postpone making decisions on planning applications for the duration of the Provincial Emergency without concern of receiving appeals of non-decisions.
- Virtual public meetings (using software such as Zoom or Webex) are required to be held for planning applications where regulations in the *Planning Act* require a public meeting or hearing; and
- For those municipalities who wish to move applications ahead, the decisions made on planning applications after April 15th, 2020 could take effect following the standard 20 day appeal period.

With the current volume of planning applications received by the Department, staff are actively seeking new ways to move applications ahead.

While it has been Township practice to hold a public meeting for consent (severance) applications, under the *Planning Act* there is no requirement to hold a public meeting for a consent (severance) application. The *Planning Act* requires a notice of application to be circulated to neighbours and agencies, but does not require a public meeting.

Many municipalities across Ontario have delegated the authority for making decisions on straight-forward consent applications to staff. These are applications that meet all applicable policies and have no objections from agencies or the public. This approach is called delegating authority on “undisputed” consents. With this, public meetings are not held for “undisputed” consents and decisions on these applications are made by the Director of Development Services, or the Senior Planner in their absence.

Several municipalities in the Kingston area, including the City of Kingston, the City of Belleville, Loyalist Township and Stone Mill Township follow this practice, meaning they have delegated authority to staff in order to make decisions on straightforward consent applications.

With the volume of applications that will need to be considered by Committee of Adjustment in the coming months, delegating approval to staff for simple, straight-forward applications will allow Committee members to focus on more complex



REPORT TO COUNCIL

DEVELOPMENT SERVICES DEPARTMENT



applications that require public meetings under the *Planning Act* (e.g. minor variances) and those which would benefit from a public meeting (disputed consents) once virtual Committee of Adjustment meetings are able to be held.

ANALYSIS/DISCUSSION:

Planning staff have prepared a by-law that Council can consider under Section 54 of the *Planning Act* that proposes to delegate the authority for “undisputed” consent approval and validation certificates.

For the purposes of the by-law a “consent” means:

- An application for the creation of a new lot;
- An application along a common party wall of an existing building provided no minor variances are required;
- An application to create or extend a right-of-way or easement;
- An application to adjust a lot boundary or facilitate a lot addition;
- An application for consent to a power of sale or mortgage;
- An application for consent to a lease in excess of 21 years; and
- An application for validation of title (also known as a validation certificate to confirm ownership).

An “undisputed consent” and “undisputed validation certificate” is a consent/validation certificate application that satisfies all of the following criteria:

- Is consistent with the Provincial Policy Statement (s. 3(5) *Planning Act*);
- Does not require a plan of subdivision for the proper and orderly development of the municipality (s. 53(1) *Planning Act*);
- Conforms with section 51(24) of the *Planning Act*;
- Conforms with the Frontenac County Official Plan;
- Conforms with the South Frontenac Official Plan;
- Complies with the South Frontenac Zoning By-law (or will comply subject to a standard condition of rezoning or minor variance); and
- Has no unresolved objections/concerns raised from agencies or the public.

Undisputed applications are those applications where the application complies with the policy framework, and about which no concerns from technical agencies, the public, a public body or Township staff have been raised that could not be addressed through conditions. “Disputed” consent applications would be forwarded to the Committee of Adjustment for a decision in the regular manner.

Delegation of Consent Authority is ONLY for making a decision on undisputed applications. The delegation does not affect any of the provisions of the *Planning Act* regarding the requirements to provide notice of application, distribution of the decision and appeal rights. Decisions made by staff are still subject to an appeal to LPAT, just the same as the decisions made by the Committee of Adjustment.

Consistent with current Township practice, staff would continue to circulate a notice of application to neighbours and require signs to be posted on the property for 14 days. The notice of application would indicate that comments must be provided in writing or by contacting staff. If an application generates concerns by members of the public or agencies that cannot be addressed by standard conditions, staff will refer the application on to the Committee of Adjustment for a decision. A public



REPORT TO COUNCIL DEVELOPMENT SERVICES DEPARTMENT



meeting will be scheduled and anyone who provided comment on an application would be advised of the date/time of the public meeting.

Development approval processing time can be reduced through the delegation of approval authority to staff for undisputed consents. Delegation of these types of approvals can eliminate two to three weeks from approval timelines, since these applications and associated documentation and presentations no longer have to be prepared and scheduled through the Committee process. Delegating authority to staff can result in improved customer service and lead to internal efficiencies in processing time.

FINANCIAL/STAFFING IMPLICATIONS:

The by-law proposes to delegate the authority to make decisions on “undisputed” consents to the Director of Development Services, and in the Director's absence, to the Senior Planner in the Development Services Department.

Delegating consents to staff would allow for on-going approvals of applications rather than waiting for approvals to occur at one meeting per month. Delegating the authority to staff for straight-forward, undisputed applications also allows the Committee additional time to focus on more complex applications that truly benefit from broader consideration by Committee members.

ATTACHMENTS:

Attachment 1 – Undisputed and Disputed Consent (Severance) Processes

Attachment 2 – By-law 2020-27 - Delegation of Authority for Undisputed Consents (under By-law section of agenda)

Prepared by:

Claire Dodds, Director of Development Services

Submitted/approved by:

Neil Carbone, CAO

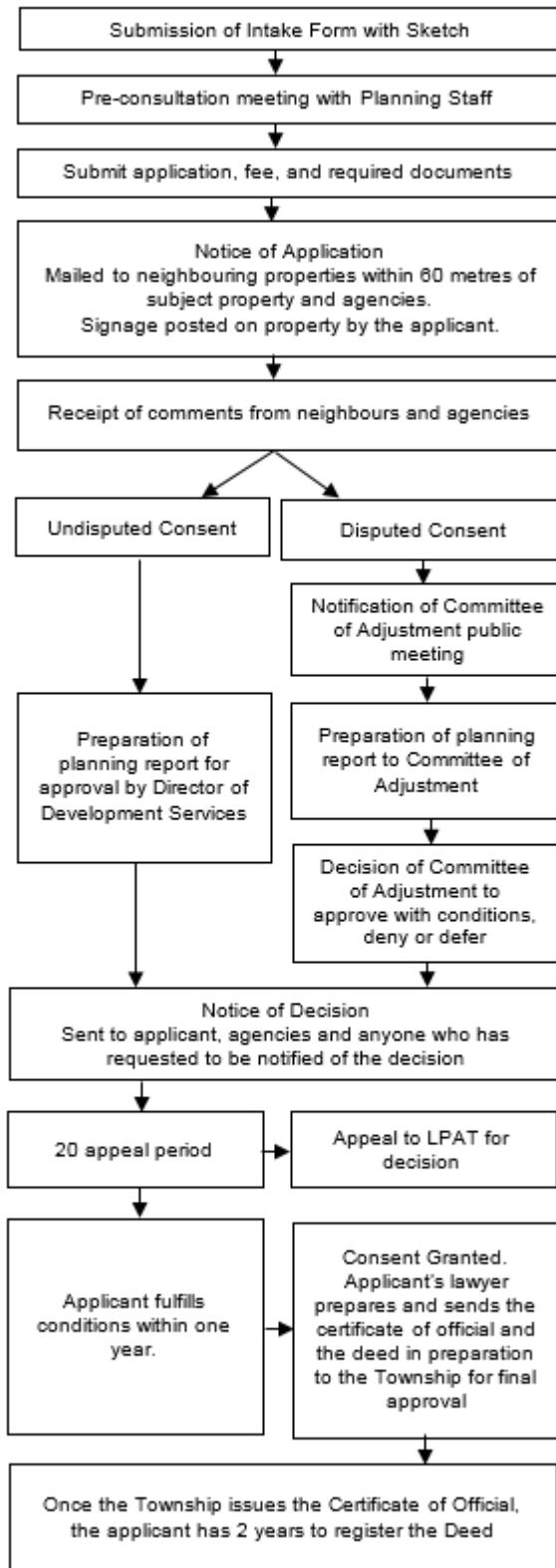


REPORT TO COUNCIL DEVELOPMENT SERVICES DEPARTMENT



Attachment 1:

Undisputed and Disputed Consent (Severance) Processes



**TOWNSHIP OF SOUTH FRONTENAC
BY-LAW 2020-27**

**A BY-LAW OF THE CORPORATION OF THE TOWNSHIP OF SOUTH FRONTENAC
TO DELEGATE THE AUTHORITY TO GRANT CONSENTS AND VALIDATION
CERTIFICATES TO STAFF.**

WHEREAS Section 54(2) of the *Planning Act, RSO 1990*, as amended, empowers the Council of a municipality to delegate the authority to grant consents and validation certificates to a Committee of Council or to an appointed officer by name or position occupied;

AND WHEREAS the Council of the Corporation of the Township of South Frontenac deems it advisable to delegate the authority to grant consents and validation certificates for undisputed applications to an appointed officer;

**NOW THEREFORE THE COUNCIL OF THE CORPORATION OF THE TOWNSHIP OF
SOUTH FRONTENAC ENACTS AS FOLLOWS:**

1. THAT the authority to grant undisputed consents and undisputed validation certificates, as defined in this by-law, under Sections 53 and 57 of the *Planning Act, RSO 1990*, as amended, including the authority to change conditions of a provisional undisputed consent and validation certificates, is hereby delegated to the Director of Development Services, and in the Director's absence, to the Senior Planner in the Development Services Department.
3. An "undisputed consent" and "undisputed validation certificate" is a consent/certificate application that satisfies all of the following criteria:
 - Is consistent with the Provincial Policy Statement (s. 3(5) *Planning Act*);
 - Does not require a plan of subdivision for the proper and orderly development of the municipality (s. 53(1) *Planning Act*);
 - Conforms with section 51(24) of the *Planning Act*;
 - Conforms with the Frontenac County Official Plan;
 - Conforms with the South Frontenac Official Plan;
 - Complies with the South Frontenac Zoning By-law (or will comply subject to a standard condition of rezoning or minor variance); and
 - Has no unresolved objections/concerns raised from agencies or the public.
4. THAT the authority to change the conditions of undisputed consents and undisputed validation certificates as per subsection 53(23) of the *Planning Act* at any time before a consent is given, and to determine if a change to conditions is minor or not as per subsection 53(26) of the *Planning Act* for the purpose of giving notice, is hereby delegated to the Director of Development Services, and in the Director's absence, to the Senior Planner in the Development Services Department.
5. This By-law shall come into force and take effect on May 19th, 2020.

Dated at the Township of South Frontenac this 19th day of May, 2020.

Read a first and second time this 19th day of May, 2020.

Read a third time and finally passed this 19th day of May, 2020.

**THE CORPORATION OF THE
TOWNSHIP OF SOUTH FRONTENAC**



Ron Vandewal, Mayor



Angela Maddocks, Clerk



Delegated Consent Process in South Frontenac



On May 19, 2020, South Frontenac Council put in place a new system for approving consent (severance) applications in the Township.

Through By-law 2020-27, Council delegated approval of consent applications that are “**undisputed**” to the Director of Development Services, or their designate.

Under By-law 2020-27, an “**undisputed**” consent application is an application that meets the following criteria:

- Is consistent with the Provincial Policy Statement (s. 3(5) *Planning Act*);
- Does not require a plan of subdivision for the proper and orderly development of the municipality (s. 53(1) *Planning Act*);
- Conforms with section 51(24) of the *Planning Act*;
- Conforms with the Frontenac County Official Plan;
- Conforms with the South Frontenac Official Plan;
- Complies with the South Frontenac Zoning By-law (or will comply subject to a standard condition of rezoning or minor variance); and
- Has no unresolved objections/concerns raised from agencies or the public.

Once consent applications have been declared complete, staff will prepare a sign to be posted on the applicant’s property and a Notice of Application will be circulated to all owners of property within 60 metres of the subject property. The Notice of Application will include the last date comments will be received from the public. Information about how the public can provide comments to planning staff will be included in the notice.

Consent applications will be circulated to agencies and Township departments (e.g. Conservation Authority, Ministry of Environment, South Frontenac Public Services and Building Department) for comment.

Any person or agency who raises objections/concerns during the commenting period will be contacted by staff to determine if objections/concerns can be resolved.

If there are no outstanding objections/concerns from agencies or the public on a consent application, and it complies with all Planning policies, and the applicant is agreeable to the recommended conditions, the Director of Development Services (or their designate) can approve the consent application as an “**undisputed**” consent without the need to hold a public meeting.

If concerns cannot be resolved, or if an application does not comply with all of the Planning policies, it will be considered to be a “**disputed**” application and will be forwarded to the South Frontenac Committee of Adjustment for a decision.

The applicant, and anyone who has raised objections/concerns, will be contacted to advise if the application is “**undisputed**” or “**disputed**” and whether it will be approved by the Director or forwarded to the Committee of Adjustment for a decision.

A public meeting will be held for “**disputed**” applications considered by the Committee of Adjustment. During the COVID19 Pandemic, public meetings of the Committee of Adjustment will be held virtually. The application will be scheduled on the next available South Frontenac Committee of Adjustment meeting.

The applicant and anyone who raised objections/concerns and/or requested notice of a decision on the application will be advised when the application will be heard by the Committee of Adjustment.

Once a decision has been made, the applicant, and anyone who requested notice, will be advised of the decision on the application. Under the regulations of the *Planning Act*, there is a 20 day appeal period before the decision is final. A decision made by the Director or by the Committee of Adjustment can be appealed to the Local Planning Appeal Tribunal.



Delegated Consent Process in South Frontenac



Once a decision on a consent application is final, the applicant has one year to fulfill conditions of draft approval. If the conditions not be fulfilled within one year, the consent will lapse.

The diagram below shows the steps in the consent process and the difference between the undisputed (delegated) and disputed application approval process.

Undisputed versus Disputed Consent Process

